



# **Southern Connecticut State University**

---

**CCSAR – Center for Community  
and School Action Research**

<http://ccsar.southernct.edu> Tel: (203) 392-6439

Norris M. Haynes, Ph. D., Director

Maureen Gilbride-Redman, M.P.A., Research Associate, Assistant Director

James M. Granfield, Ph.D., Interim Dean, School of Education

**Prepared by:**

**Susan Rood Tiso, B.S.**

**Maureen Gilbride-Redman, M.P.A.**

**Norris M. Haynes, Ph.D.**

**Academic Year 2007-2008**

---

**A Report on SCSU Student Teaching Performance**  
*An Analysis of Student Teaching Evaluation Responses*  
**Submitted by Cooperating Teachers**  
**Fall 2007**

**A Report on SCSU Student Teaching Performance**  
***An Analysis of Student Teaching Evaluation Responses***  
**Submitted by Cooperating Teacher - Fall 2007**

The Southern Connecticut State University (SCSU) School of Education (SOE) distributes the *Evaluation of Student Teaching Performance (ESTP)* survey to Cooperating Teachers who are working with SCSU teacher candidates during their student teaching placement.

The purpose of the *ESTP* survey is to determine how well the SOE has prepared teacher candidates to student teach, and to meet the competency requirements stipulated by the accrediting agencies for SCSU's various programs. Cooperating Teachers are also encouraged to use the *ESTP* survey as a basis for discussing candidates' competencies throughout the student teaching experience. The *ESTP* survey addresses candidates' behavior and performance relative to the Interstate New Teachers Assessment and Support Consortium (INTASC) standards and the requirements listed in Connecticut's *Common Core of Teaching*.

The specific goals of collecting and analyzing the Fall 2007 *ESTP* surveys are:

- to determine Cooperating Teachers' perceptions of SCSU student teachers and their level of competency;
- to obtain ideas and suggestions for improving the quality of the field experience that SCSU provides its student teachers; and
- to meet the needs of Connecticut schools for highly trained and well-prepared classroom teachers.

### Method

#### *Participants*

One hundred twenty seven *ESTP* surveys were collected and analyzed for this study. These surveys represent the evaluation of teacher candidates who were student teaching during the fall of 2007 in (1) a second eight-week student teaching placement, or (2) a ten-week student teaching placement. Candidates evaluated represented a variety of majors and programs and were seeking certification in Elementary, Secondary, or K-12 Education. The distribution of programs leading to certification can be viewed in Table 1.

**Table 1- Program of Study/Certification Area**

Program of Study	Level of Certification		
	Elementary	Secondary	K-12
Early Childhood	3		
Elementary Education	47		
Biology		4	
English		10	
Math		10	
Social Studies		9	
Spanish		1	
Art			9

Library Science			1
Physical Education			13
Special Education			12
School Health			1
<b>Total</b>	<b>50</b>	<b>34</b>	<b>36</b>

\* 7 surveys did not indicate their area of certification.

### ***Apparatus***

The *ESTP* survey is an evaluation instrument developed and used by the School of Education. Part one (A) of the survey requests demographic information and the second part (sections B-K) of the survey consists of 66 items, divided into the ten INTASC competency areas. The ten competency areas are listed below, along with the individual items that define each competency standard. Space is provided after each competency area for additional comments. There is a section at the end of the survey for ‘*Summary Statements*,’ 3 overall scores for ‘planning, teaching, and impact on student learning’, and the assignment of a final pass or fail grade. Cooperating Teachers evaluate student teacher candidates using the following 3-point scale:

- |                          |  |
|--------------------------|--|
| 1 = Unacceptable or Met- | Demonstrates minimal progress toward objective   |
| 2 = Acceptable or Met    | Demonstrates consistent achievement              |
| 3 = Target or Met+       | Demonstrates exemplary achievement of objective. |
| N/A                      | No opportunity or not applicable                 |

The 10 competency areas align with the Interstate New Teachers Assessment and Support Consortium (INTASC): *Model Standards for the Beginning Teacher Licensing and Development* and the standards set by the accrediting agencies for SCSU’s various programs, e.g., CSDE, NCATE, etc. The 10 INTASC Standards are:

- I.** Knowledge of Subject Matter, items 1.1-1.6 (b);
- II.** Knowledge of Human Development and Learning, 2.1-2.4 (c);
- III.** Instruction is Adapted to Meet Diverse Learners, 3.1-3.4 (d);
- IV.** Use of Multiple Instructional Strategies and Resources, 4.1-4.10 (e);
- V.** An Effective Learning Environment is Created, 5.1-5.11 (f);
- VI.** Effective Communication to Foster Inquiry & Collaboration, 6.1-6.6 (g);
- VII.** Lesson Planning, 7.1-7.11 (h);
- VIII.** Assessment of Student Learning to Improve Teaching, 8.1-8. 4(i);
- IX.** Reflection and Professional Development, 9.1-9.5 (j);
- X.** Partnerships with School and Community, 10.1-10.5 (k)

Internal consistency reliabilities were calculated for the survey as well as for each INTASC standard. The internal consistency reliability for the instrument was an alpha (Cronbach’s) of .984 and the estimates of internal consistency reliability for the ten INTASC standards ranged from .820 to .920 (Cronbach’s alpha).

### ***Procedure***

The SOE Office of Student Teaching provided CCSAR with the *Evaluation of Student Teaching Performance (ESTP)* surveys collected during the fall 2007 semester. Data collection for this study ended in February 2008.

CCSAR reviewed each survey to ensure that it was for the correct period (fall 2007, second eight-weeks and ten-week placements only) and completed on the appropriate evaluation sheet. Surveys that did not meet both of these requirements were discarded. A coding frame was then developed and each survey assigned a unique identification number.

Data were then entered into SPSS Statistical Software using the following scale: 1 = Unacceptable or Met-, 2 = Acceptable of Met, 3 = Target or Met+, and 9 = N/A. Next, researchers recoded all responses of N/A to 'system missing' to address only those behaviors that were assessed by the Cooperating Teachers. Ten new variables were created to measure candidates' performance in the INTASC standard areas. This was accomplished by summing together items that collectively defined each standard, and then calculating the mean and standard deviation score for that standard. Statistical indices were also calculated for each survey item, including frequency bar charts, to provide a quick, yet comprehensive view of the distribution of data.

### **Results**

Descriptive statistics summarizing the distribution of item and INTASC scores were developed using graphical representation and computing descriptive statistical indices, e.g., mean, standard deviations, etc. The results from the descriptive analyses indicated that the mean item scores ranged from **M = 2.56, SD = .533** for item 4.4 '*Engages students in selecting their own learning objectives and activities*' to **M = 2.94, SD = .245** for item 5.8 '*Demonstrates ethical behavior.*' The ten INTASC standard mean scores ranged from **M = 2.72, SD = .395** for **Standard 10: 'Partnerships with School and Community'** to **M = 2.83, SD = .274** for **Standard 7: 'Lesson Planning'**. The percentage of items that were not responded to was highest in Section K, INTASC Standard 10. Thirty-five percent of the Cooperating Teachers did not respond to Item K1, 47% for K2, 38% for K3, and 42% did not respond to K5. The mean and standard deviations scores for items and INTASC standards and frequency bar charts are located in the Appendix.

Assessment on overall score for planning, teaching, and impact on student learning were provided for approximately 30% of the student teachers.

**Table 2 – Overall Mean Scores and Standard Deviation (for 30% of candidates)**

	<b>Mean Score</b>	<b>Standard Deviation</b>
Overall score on planning	2.90	.307
Overall score on teaching	2.82	.393
Overall score/impact on student learning	2.86	.347

### **Qualitative Analysis**

Cooperating teacher comments listed throughout the *Evaluation of Student Teaching Performance* survey were reviewed. Areas of strength noted most often by the Cooperating Teachers were that the teacher candidates' "*lesson plans were planned with clear objectives and [were] appropriate to the students' developmental level,*" and that they came with "*superior knowledge in content area[s].*" Other key strengths included candidates' ability to collaborate, "*she made a strong connection with colleagues, students, and administration,*" their ability to assess and modify lessons, "*she was able to monitor and adjust her objectives based on student performance,*" and their overall commitment to the profession.

The only areas of concern, areas where the Cooperating Teachers thought there was room for improvement, were in areas that generally require hands-on experience to really master (i.e., the ability to create an effective learning environment and manage the classroom). In general, it was felt that with more time and experience, these skills would improve.

### **Discussion**

It is apparent that by the time SCSU teacher candidates approach their student teaching experiences, they have been prepared well, and come "*ready to work the first day.*" Both the quantitative and qualitative results support this. Cooperating Teachers believe SCSU student teachers are demonstrating consistent achievement above the 'acceptable' category as evidenced by the strong range of mean scores on individual items (**2.56 – 2.94**) and on the ten INTASC standards (**2.72 – 2.83**). Collectively these results support the conclusion that SCSU educator preparation programs are effectively preparing students to teach.

## APPENDIX

**Table 1 - The Ten INTASC Standards and the Items that Define Each Standard  
Scale: 1 = Met- or unacceptable, 2 = Met or acceptable, 3 = Met+ or target**

	Mean Score	Standard Deviation
<b>INTASC Standard I -Knowledge of Subject Matter</b> Section B (b1 – b6)	<b>2.82</b>	<b>.315</b>
1.1 Demonstrates proficiency in reading, writing, and mathematics	2.83	.400
1.2 Knows and understands the major principles and concepts of the material to be taught	2.85	.381
1.3 Possesses accurate and up-to-date principles of the material taught	2.81	.414
1.4 Understands the purpose and value of the material taught	2.85	.354
1.5 Is able to formulate meaningful questions about the subject matter	2.81	.394
1.6 Knows appropriate sources of additional information about the materials to be taught	2.80	.420
<b>INTASC Standard 2 -Knowledge of Human Development and Learning</b> Section C (c1- c4)	<b>2.73</b>	<b>.382</b>
2.1 Understands how the following areas of development relate to planning and organization: physical, social, emotional, and intellectual	2.80	.425
2.2 Uses student strengths as a basis of growth and plans instruction accordingly	2.70	.479
2.3 Understands how learning occurs, as well as how students construct knowledge, acquire skills, and develop habits of mind	2.72	.451
2.4 Uses basic principles of learning and human development to enhance learning of students from diverse backgrounds	2.74	.442
<b>INTASC Standard 3- Instruction is Adapted to Meet Diverse Learners</b> Section D( d1-d4)	<b>2.76</b>	<b>.352</b>
3.1 Plans instructional activities which provide for individual differences	2.72	.469
3.2 Matches teaching styles and methods with the learning situation and the learning style of students	2.74	.441
3.3 Effectively implements instructional plans and uses appropriate instructional techniques	2.79	.429
3.4 Demonstrates sensitivity to community and cultural norms and adapts instruction accordingly	2.81	.392
<b>INTASC Standard 4 -Use of Multiple Instructional Strategies and Resources</b> Section E (e1-e10)	<b>2.75</b>	<b>.324</b>
4.1 Uses a variety of instructional methods and media to address the needs of all students	2.79	.410
4.2 Uses a balance of individual, small, and large group instructional arrangements	2.85	.357
4.3 Provides instructional activities that foster student involvement	2.86	.349
4.4 Engages students in selecting their own learning objectives and activities	2.56	.533
4.5 Poses probing questions to stimulate students to recall, analyze, synthesize, and evaluate	2.68	.505
4.6 Presents opportunities that foster critical thinking and problem solving skills	2.68	.502
4.7 Presents material at levels appropriate to the needs, interests, abilities, and backgrounds of students	2.82	.383
4.8 Recognizes the conditions and needs of special education students	2.83	.374
4.9 Meets the needs of exceptional students	2.69	.484

4.10 Values the development of students' critical thinking, independent problem solving, and performance capabilities	2.80	.422
<b>INTASC Standard 5 -An Effective Learning Environment is Created</b> Section F (f1-f11)	<b>2.82</b>	<b>.294</b>
5.1 Maintains classroom routines and procedures	2.81	.434
5.2 Uses instructional time effectively, paces instructional activities appropriately, and maximizes students' time on task	2.68	.500
5.3 Provides and maintains an attractive and orderly learning environment	2.80	.425
5.4 Maintains appropriate behavior standards for students in the learning environment	2.77	.459
5.5 Develops an atmosphere which fosters self-discipline	2.72	.467
5.6 Works cooperatively with colleagues and administrators	2.88	.354
5.7 Follows the policies, procedures, and curricula of the school district	2.92	.271
5.8 Demonstrates ethical behavior	2.94	.245
5.9 Conducts effective parent/teacher conference(s)	2.76	.432
5.10 Promotes positive interpersonal relations based upon mutual respect	2.90	.331
5.11 Creates a positive learning environment that fosters curiosity and intrinsic motivation	2.79	.431
<b>INTASC Standard 6- Effective Communication to Foster Inquiry and Collaboration</b> Section G (g1-g6)	<b>2.83</b>	<b>.274</b>
6.1 Provides directions and explanations in a clear, coherent, logical manner	2.81	.393
6.2 Provides for two-way communication with students	2.92	.275
6.3 Establishes rapport and fosters positive reinforcement through verbal and non-verbal communication	2.88	.346
6.4 Assists and encourages students to research issues and questions of concern to them	2.69	.466
6.5 Promotes students' ability to effectively communicate ideas and questions of concern to them	2.84	.365
6.6 Understands how cultural and general differences can affect communication in the classroom	2.81	.394
<b>INTASC Standard 7-Lesson Planning</b> Section H (h1-h11)	<b>2.83</b>	<b>.290</b>
7.1 Plans instruction to achieve selected objectives	2.84	.388
7.2 Identifies and sequences goals of instruction	2.80	.439
7.3 Identifies and sequences objectives within lessons	2.83	.381
7.4 Identifies teaching procedures and sequences learning activities	2.79	.480
7.5 Revises instruction on the basis of student comments, questions, and performance	2.82	.384
7.6 Recognizes and understands the worth of all students and the opportunities that racial, cultural, sexual, and religious diversity present in the classroom	2.92	.272
7.7 Demonstrates sensitivity to and for the needs and feelings of all students	2.89	.363
7.8 Outlines expectations for all students in a clear manner	2.83	.374
7.9 Conducts learning activities in a logical sequence that are flexible and developmentally appropriate	2.86	.351
7.10 Provides illustration, examples, and application of the material	2.81	.430
7.11 Designs lessons that integrate technology into teaching	2.79	.429

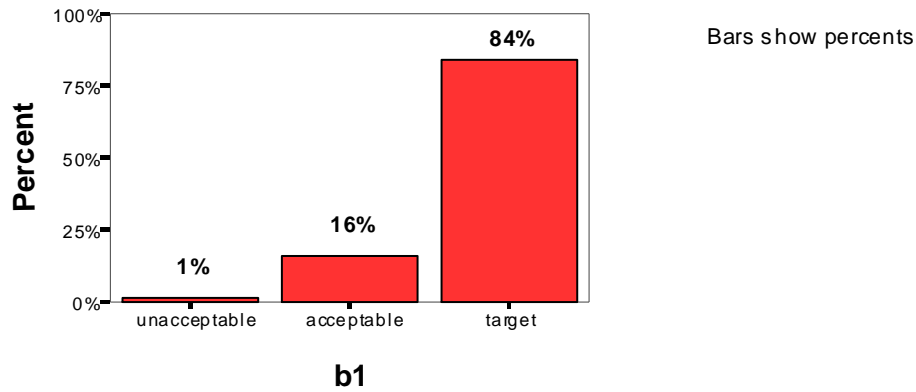
<b>INTASC Standard 8- Assessment of Student Learning to Improve Training</b> Section I (i1-i4)	<b>2.79</b>	<b>.353</b>
8.1 Recognizes and encourages the special interests and abilities of individual students	2.76	.448
8.2 Selects appropriate materials and procedures for assessing students' progress on objectives	2.82	.387
8.3 Uses evaluation instruments or procedures in order to monitor student progress and effectiveness of instruction	2.78	.439
8.4 Evaluates students on the basis of criteria that are aligned with instructional objectives	2.84	.393
<b>INTASC Standard 9-Reflection and Professional Development</b> Section J (j1-j5)	<b>2.77</b>	<b>.332</b>
9.1 Recognizes when students are deficient in the basic skills and provides or recommends corrective action	2.79	.408
9.2 Obtains and uses information from colleagues to assist students with special needs	2.81	.415
9.3 Identifies students who require the assistance of a specialist	2.77	.448
9.4 Handles discipline fairly and consistently	2.71	.489
9.5 Demonstrates ability to think about teaching and learning as both reflective practitioner and educational leader	2.78	.413
<b>INTASC Standard 10 -(Partnerships with School and Community</b> Section K (k1-k5)	<b>2.72</b>	<b>.395</b>
10.1 Encourages and maintains the cooperative involvement and support of parents and community	2.67	.473
10.2 Provides opportunities for parents and community involvement	2.61	.491
10.3 Uses community resources in instruction	2.65	.481
10.4 Understands the rights and responsibilities of students, parents, and teachers	2.85	.363
10.5. Engages parents in the learning process	2.69	.466

## B. SURVEY ITEM RESPONSES-FREQUENCY BAR CHARTS

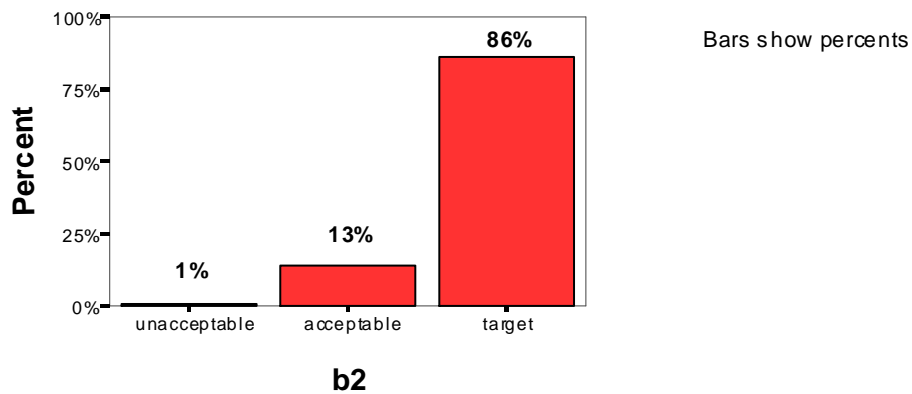
*\* percents are valid*

### INTASC Standard 1: Knowledge of Subject Matter

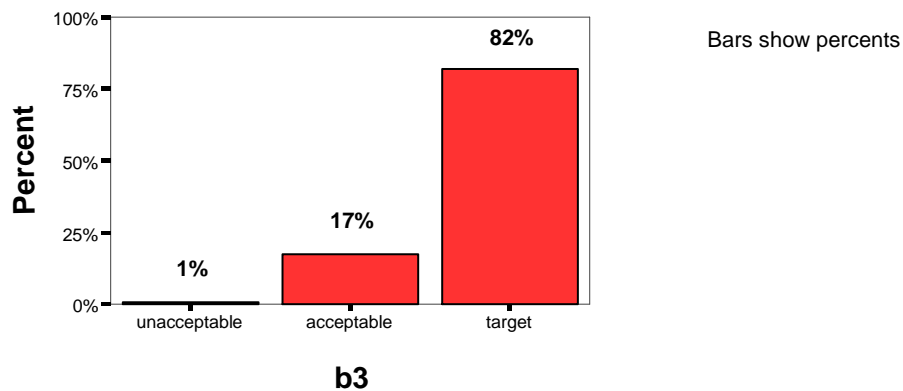
1.1/b1 Demonstrates proficiency in reading, writing, and mathematics



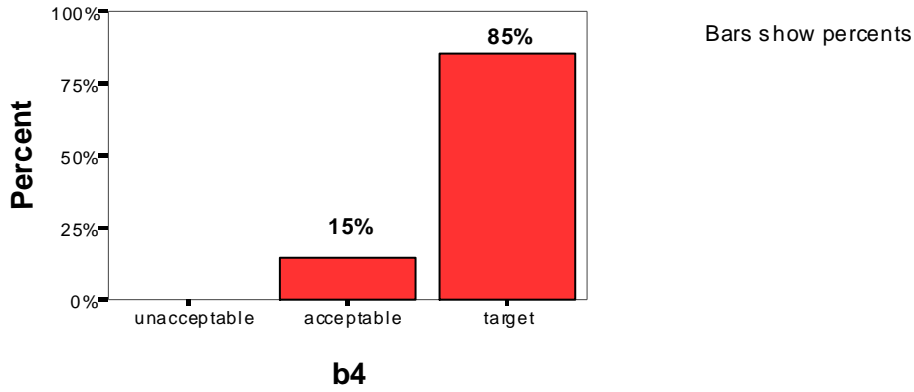
1.2/b2 Knows and understands the major principles and concepts of the material to be taught



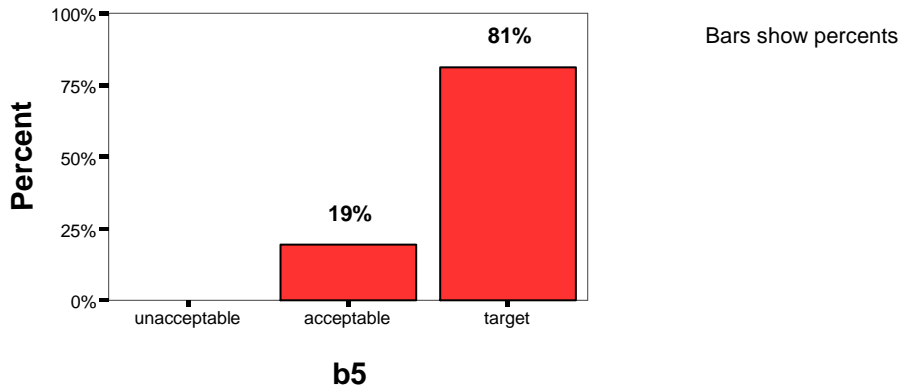
1.2 /b3 Possesses accurate and up-to-date principles of the material taught



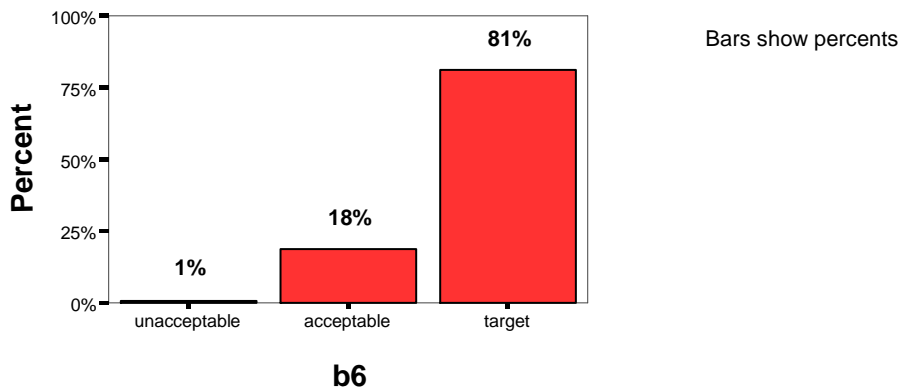
1.4 /b4 Understands the purpose and value of the material taught



1.5/b5 Is able to formulate meaningful questions about the subject matter

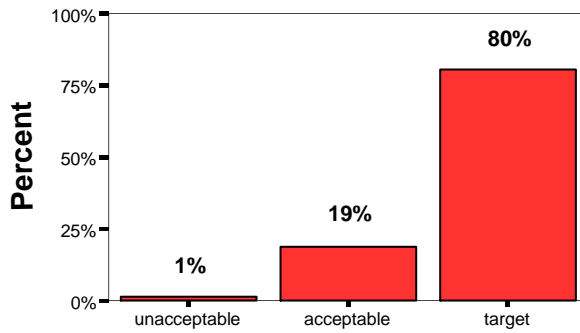


1.6 /b6 Knows appropriate sources of additional information about the materials to be taught



INTASC Standard 2: Knowledge of Human Development and Learning

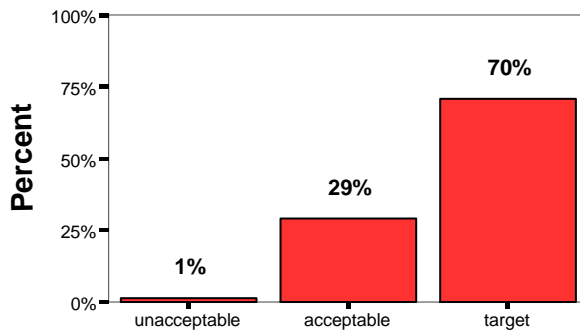
2.1/c1 Understands how the following areas of development relate to planning and organization: physical, social, emotional, and intellectual



Bars show percents

**c1**

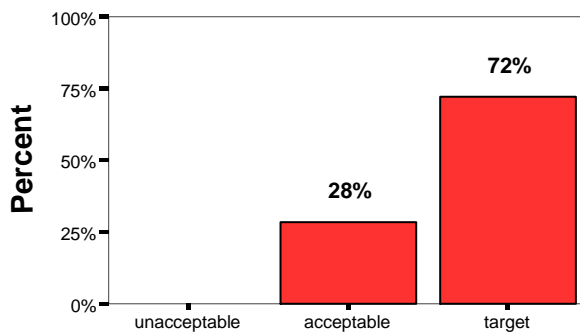
2.2/c2 Uses students' strengths as a basis of growth and plans instruction accordingly



Bars show percents

**c2**

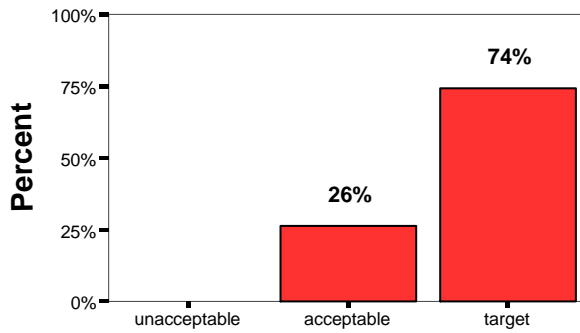
2.3/c3 Understands how learning occurs, as well as how students construct knowledge, acquire skills, and develop habits of mind



Bars show percents

**c3**

2.4/c4 Uses basic principles of learning and human development to enhance learning of students from diverse backgrounds

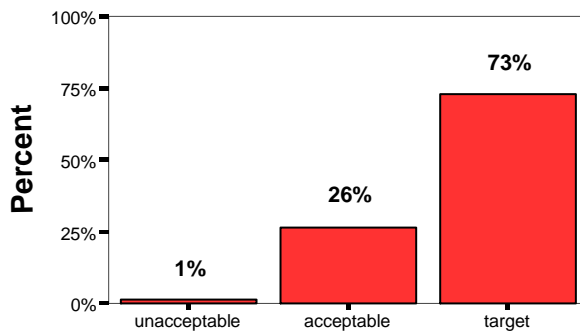


Bars show percents

**c4**

INTASC Standard 3: Instruction is Adapted to Meet Diverse Learners

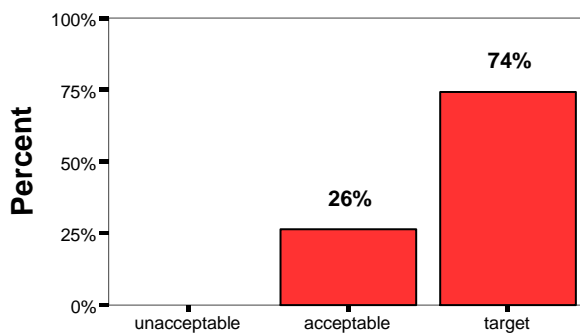
3.1/d1 Plans instructional activities that provide for individual differences



Bars show percents

**d1**

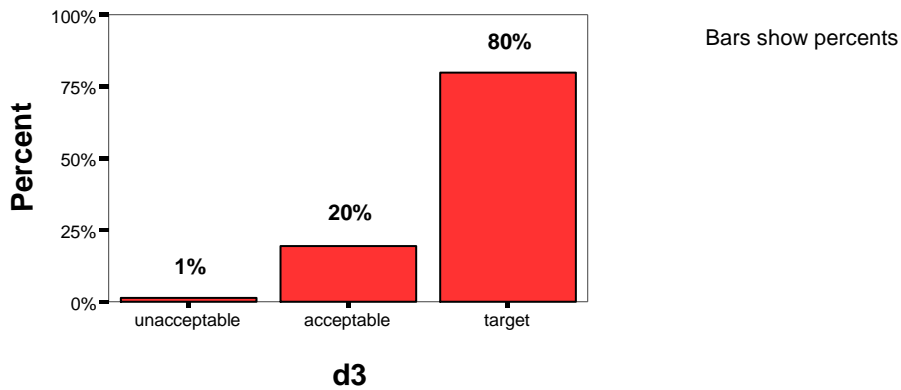
3.2/d2 Matches teaching styles and methods with the learning situation and the learning styles of students



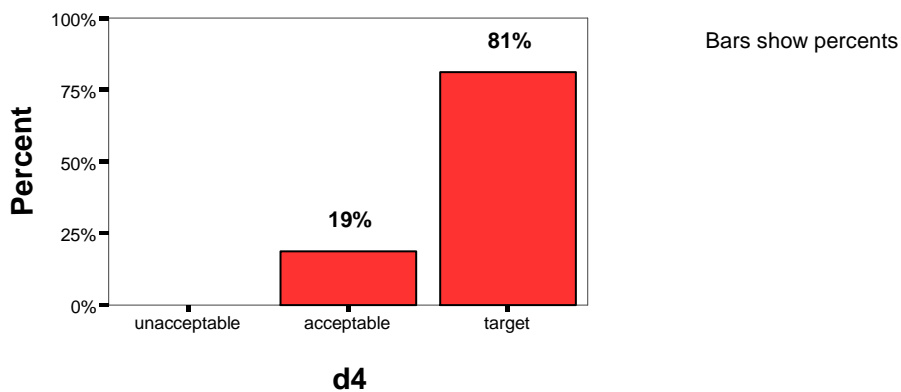
Bars show percents

**d2**

3.3/d3 Effectively implements instructional plans and uses appropriate instructional techniques

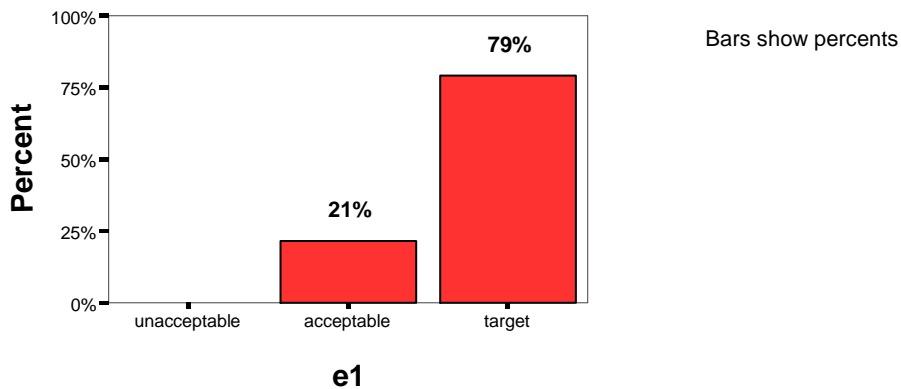


3.4/d4 Demonstrates sensitivity to community and cultural norms and adapts instruction accordingly

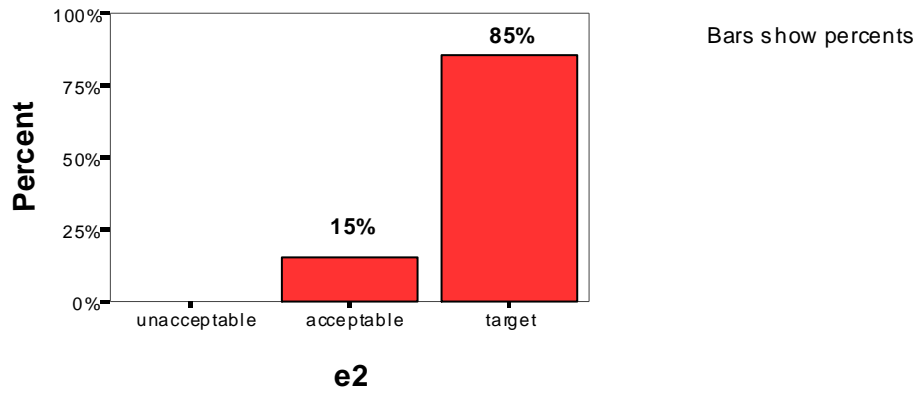


INTASC Standard 4: Use of Multiple Instructional Strategies and Resources

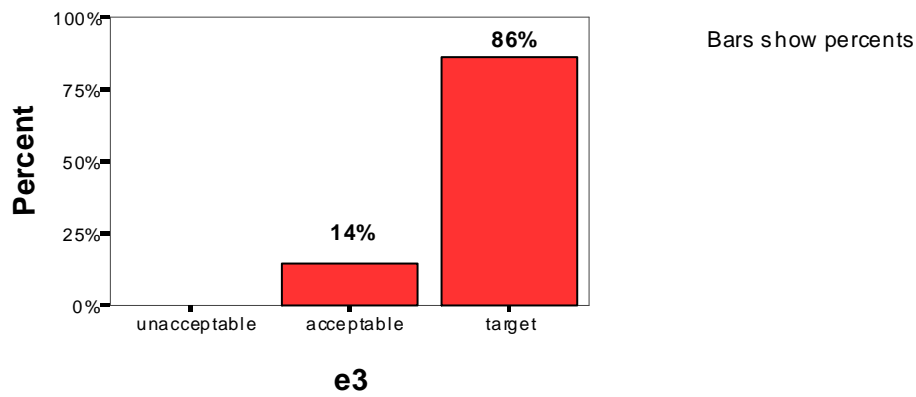
4.1/e1 Uses a variety of instructional methods and media to address the needs of all students



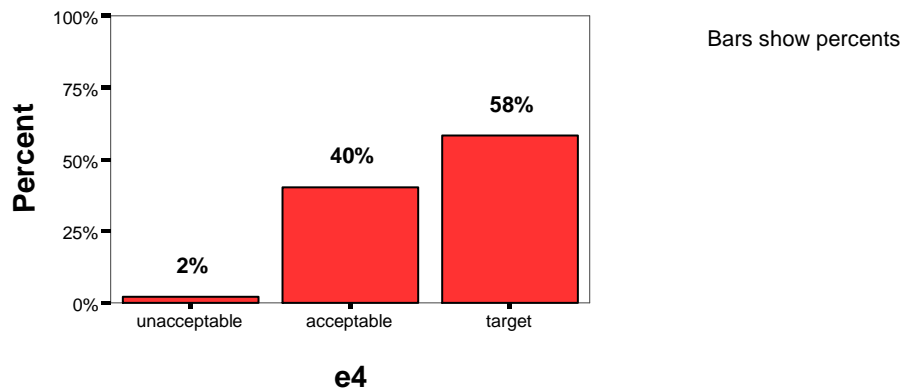
4.2/e2 Uses a balance of individual, small and large group instructional arrangements



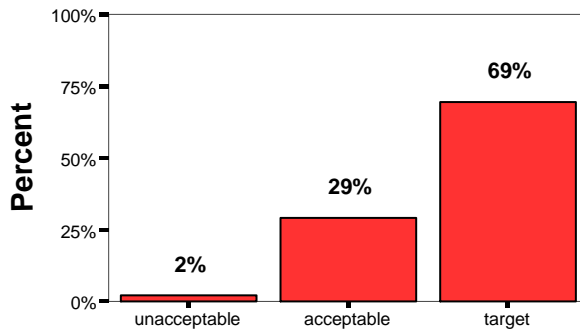
4.3/e3 Provides instructional activities that foster student involvement



4.4/e4 Engages students in selecting their own learning objectives and activities



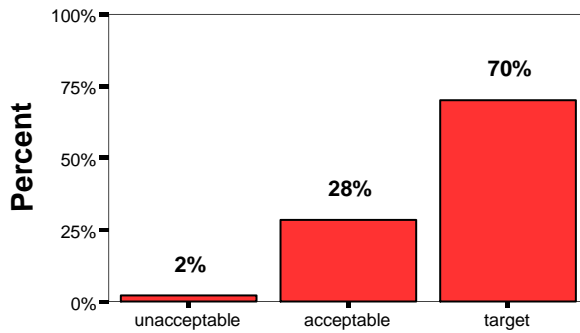
4.5/e5 Poses probing questions to stimulate students to recall, analyze, synthesize, and evaluate



Bars show percents

**e5**

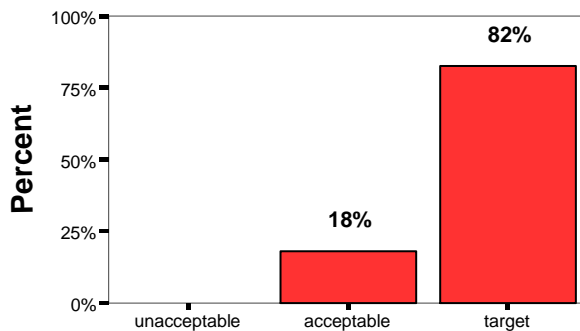
4.6/e6 Presents opportunities that foster critical thinking and problem solving skills



Bars show percents

**e6**

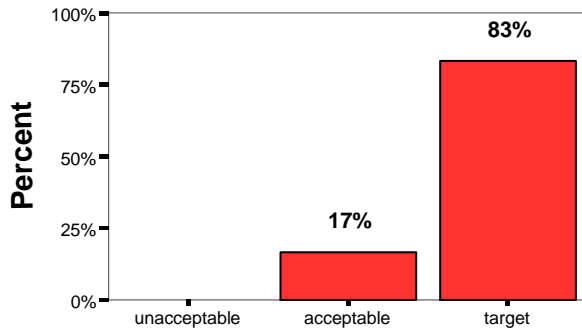
4.7/e7 Presents material at levels appropriate to the needs, interest, abilities, and backgrounds of students



Bars show percents

**e7**

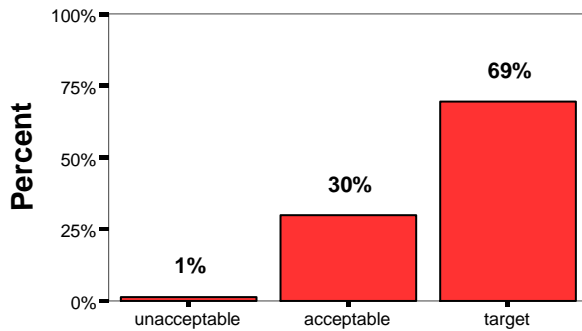
4.8/e8 Recognizes the conditions and needs of special education students



Bars show percents

**e8**

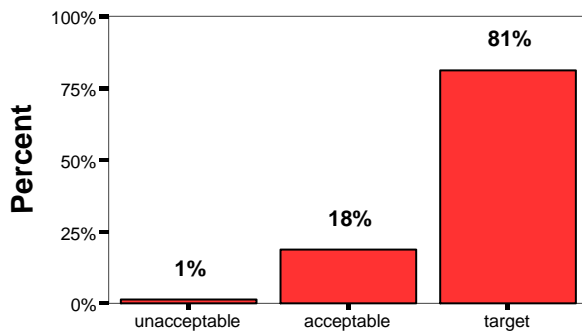
4.9/e9 Meets the needs of exceptional students



Bars show percents

**e9**

4.10/e10 Values the development of students' critical thinking, independent problem solving, and performance capabilities

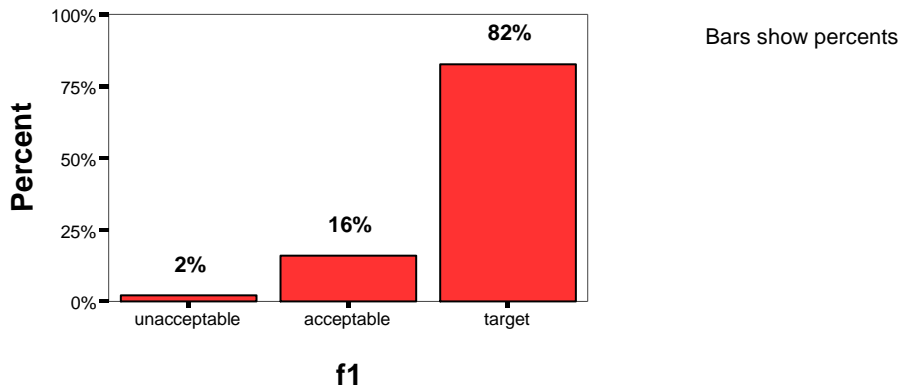


Bars show percents

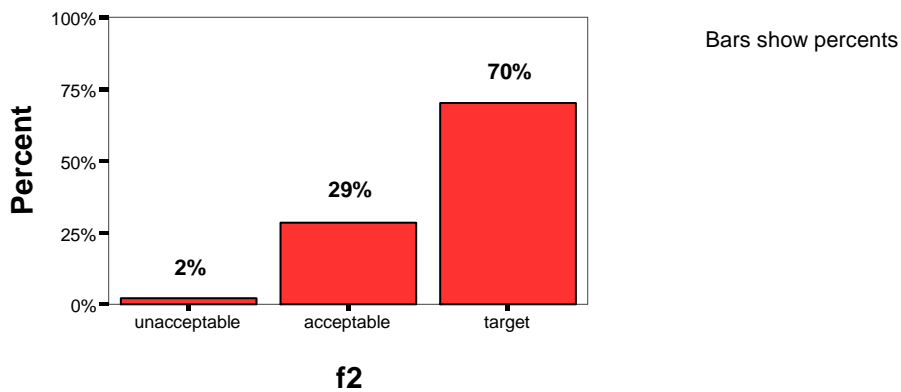
**e10**

INTASC Standard 5: An Effective Learning Environment is Created

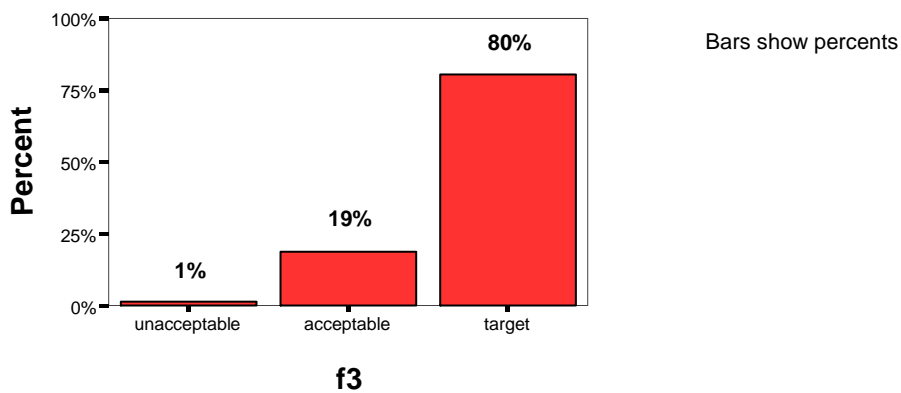
5.1/f1 Maintains classroom routines and procedures



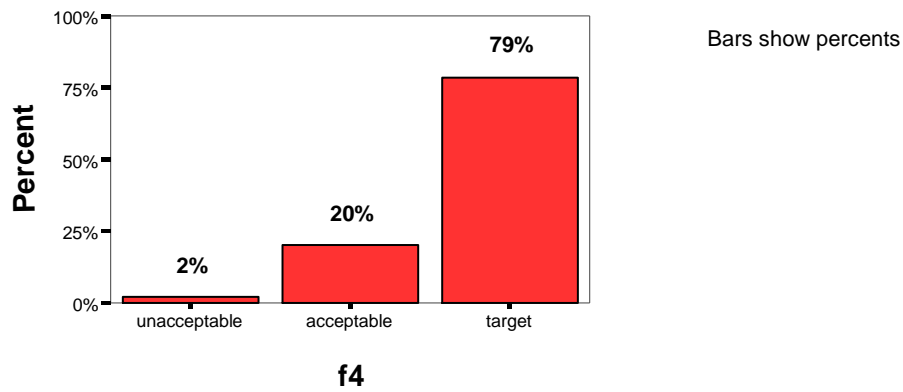
5.2/f2 Uses instructional time effectively, paces instructional activities appropriately, and maximizes students' time on task



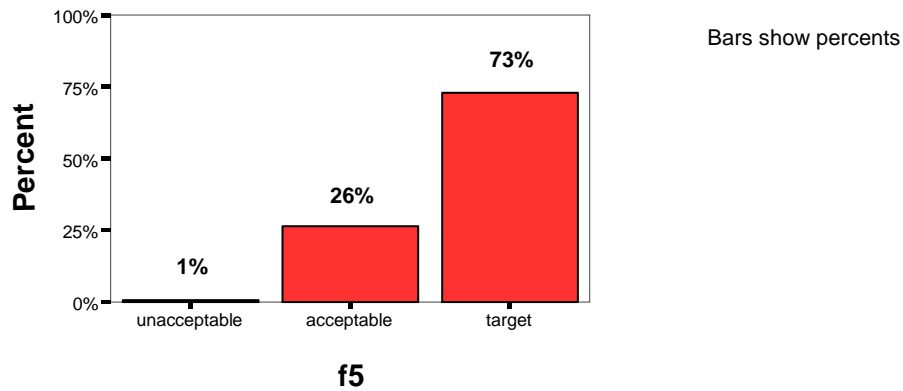
5.3/f3 Provides and maintains an attractive and orderly learning environment



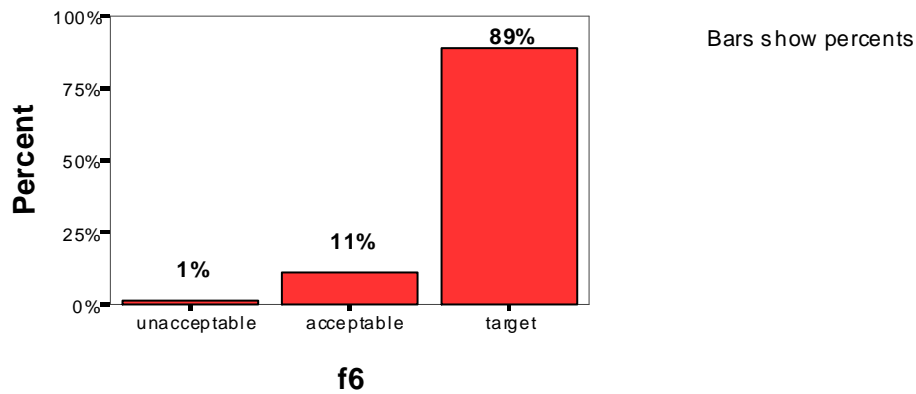
5.4/f4 Maintains appropriate behavior standards for students in the learning environment



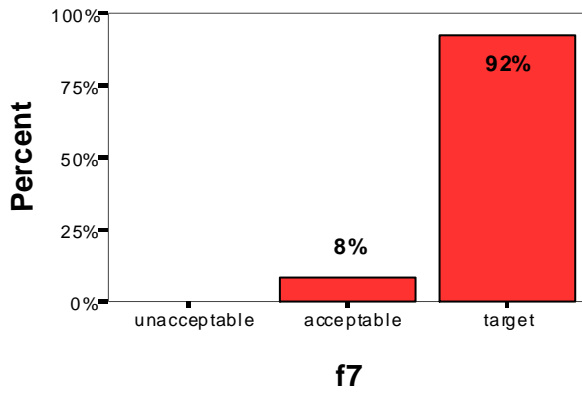
5.5/f5 Develops an atmosphere which fosters self-discipline



5.6/f6 Works cooperatively with colleagues and administrators

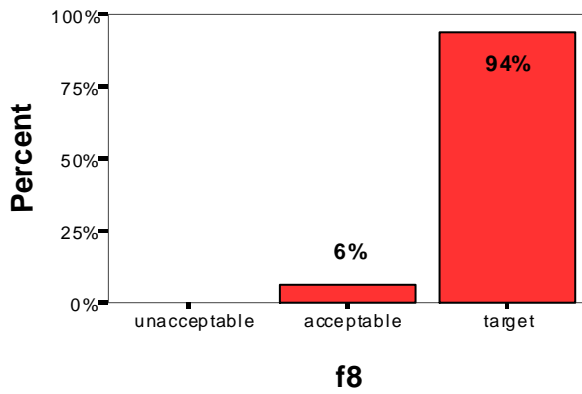


5.7 /f7 Follows the policies, procedures, and curricula of the school district



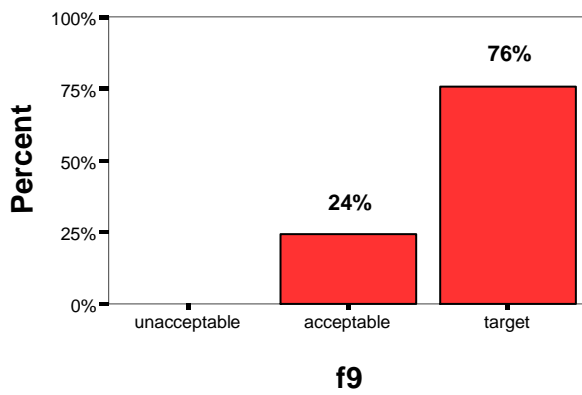
Bars show percents

5.8/f8 Demonstrates ethical behavior



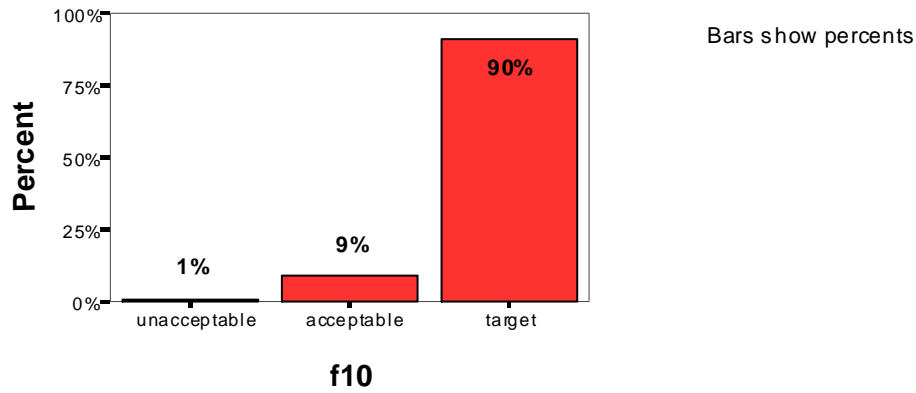
Bars show percents

5.9/f9 Conducts effective parent/teacher conference

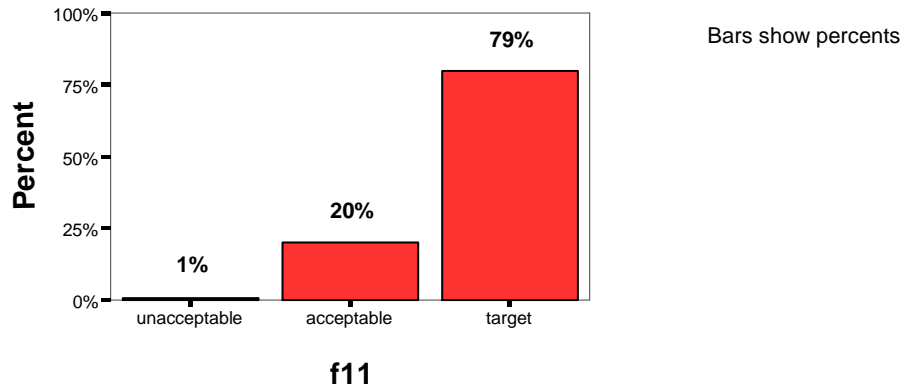


Bars show percents

5.10/f10 Promotes positive interpersonal relations based upon mutual respect

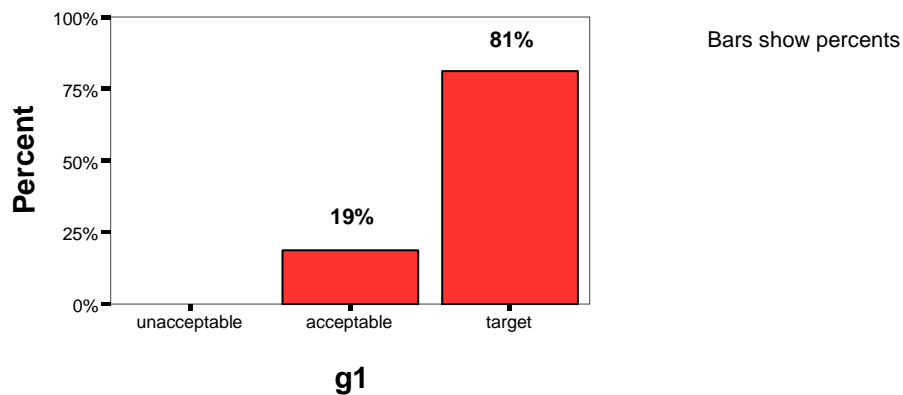


5.11/f11 Creates a positive learning environment that fosters curiosity and intrinsic motivation

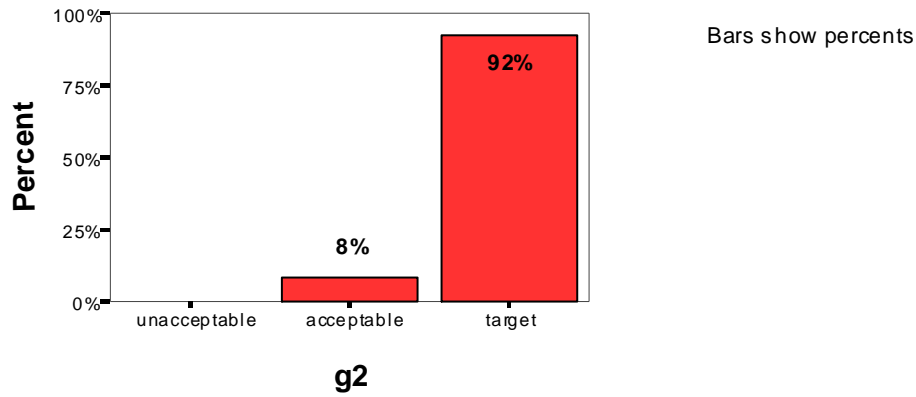


INTASC Standard 6: Effective Communication to Foster Inquiry and Collaboration

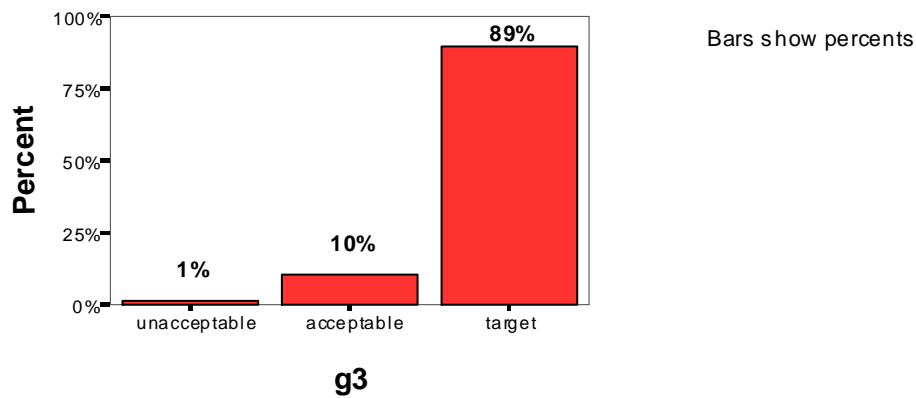
6.1/g1 Provides directions and explanations in a clear, coherent, logical manner



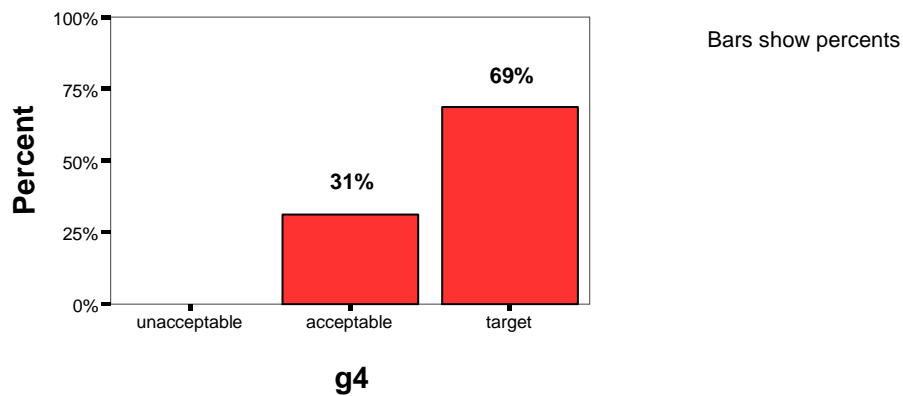
6.2/g2 Provides for two-way communication with students



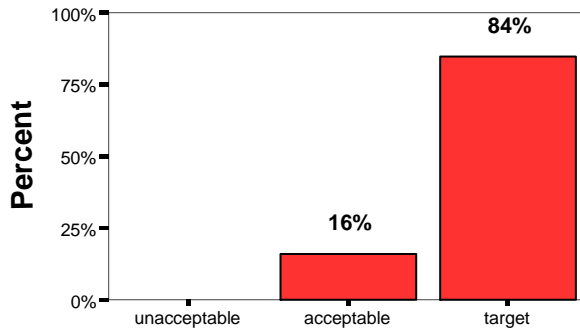
6.3/g3 Establishes rapport and fosters positive reinforcement through verbal and non-verbal communication



6.4/g4 Assists and encourages students to research issues and questions of concern to them



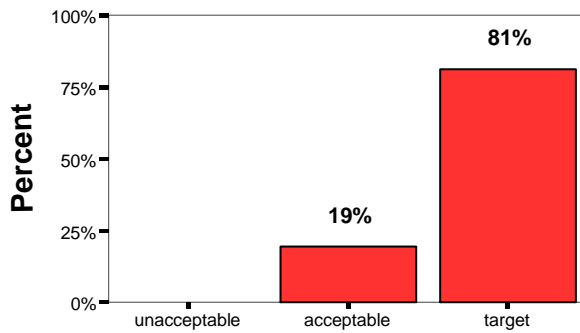
6.5/g5 Promotes students' ability to effectively communicate ideas and questions of concern to them



Bars show percents

**g5**

6.6/g6 Understands how cultural and general differences can affect communication in the classroom

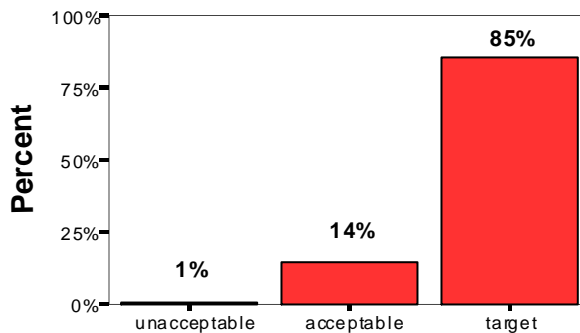


Bars show percents

**g6**

INTASC Standard 7: Lesson Planning

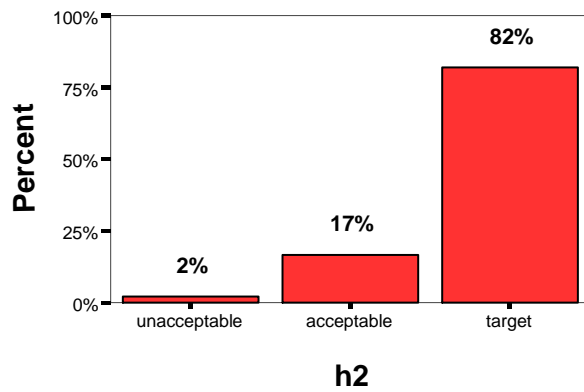
7.1/h1 Plans instruction to achieve selected objectives



Bars show percents

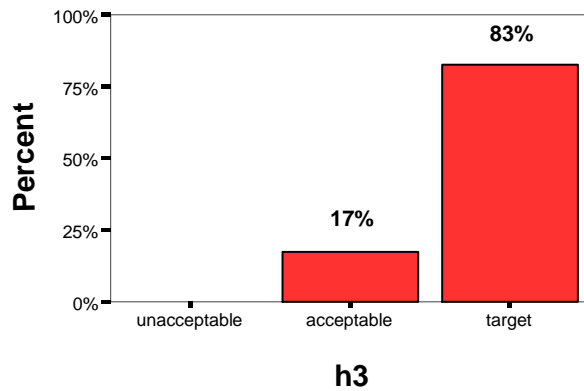
**h1**

7.2/h2 Identifies and sequences goals of instruction



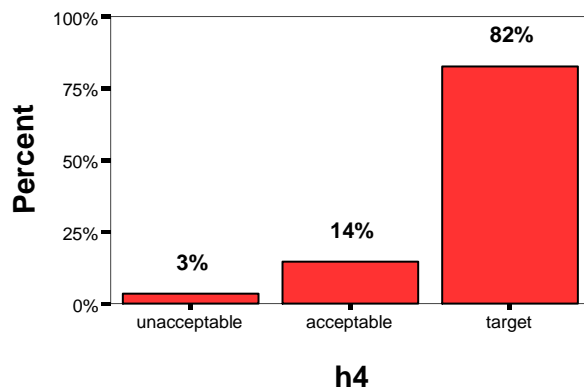
Bars show percents

7.3/h3 Identifies and sequences objectives within lessons



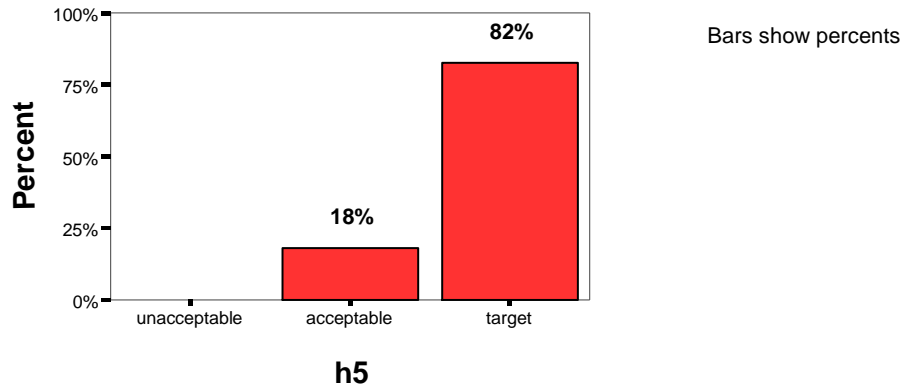
Bars show percents

7.4/h4 Identifies teaching procedures and sequences learning activities

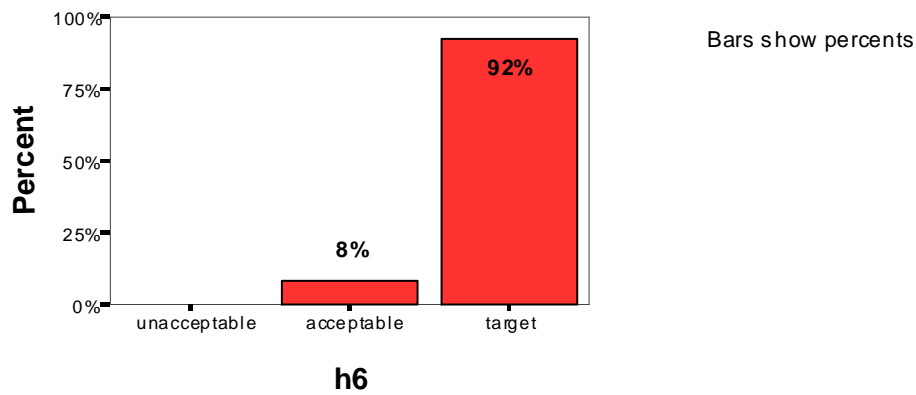


Bars show percents

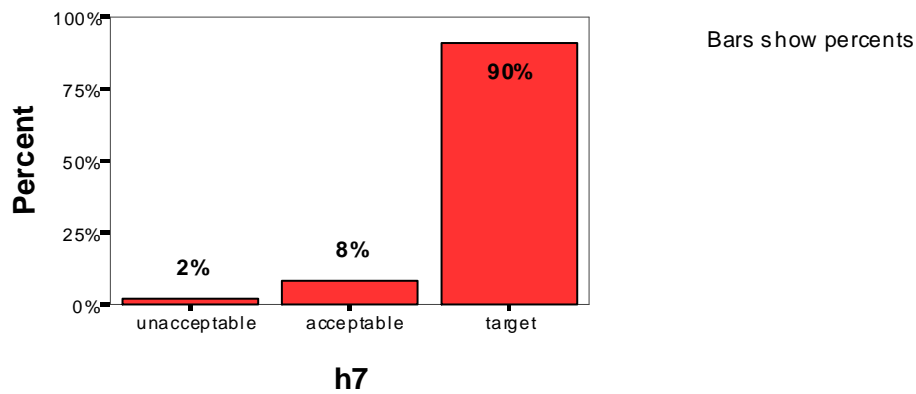
7.5/h5 Revises instruction on the basis of student comments, questions, and performance



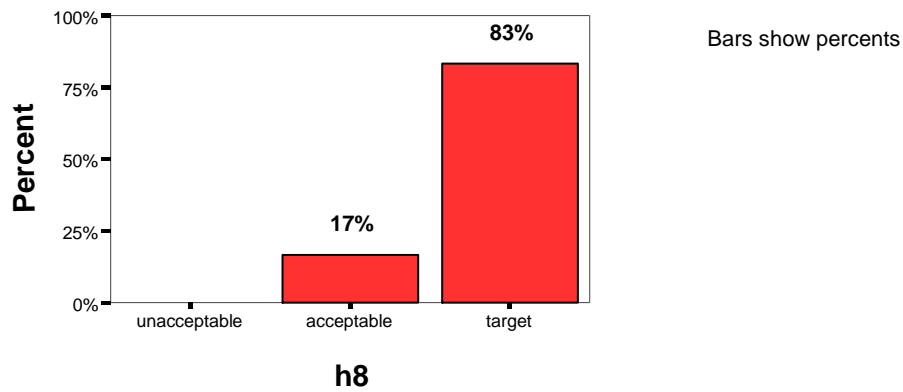
7.6/h6 Recognizes and understands the worth of all students and the opportunities that racial, cultural, sexual, and religious diversity present in the classroom



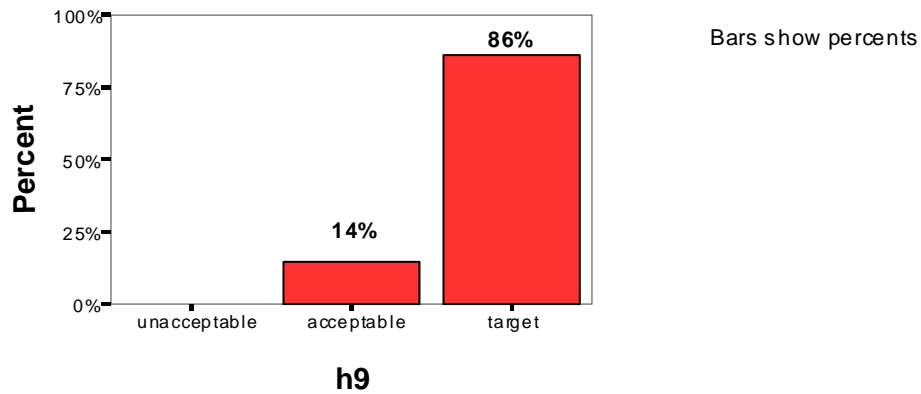
7.7/h7 Demonstrates sensitivity to and for the needs and feelings of all students



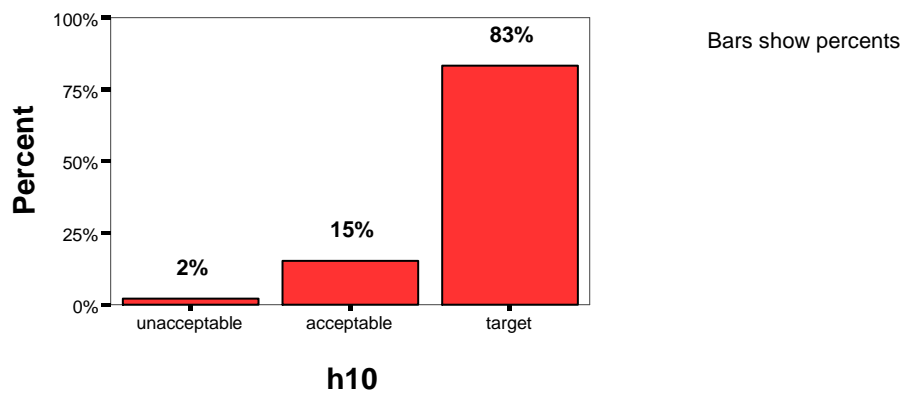
7.8 /h8 Outlines expectations for all students in a clear manner



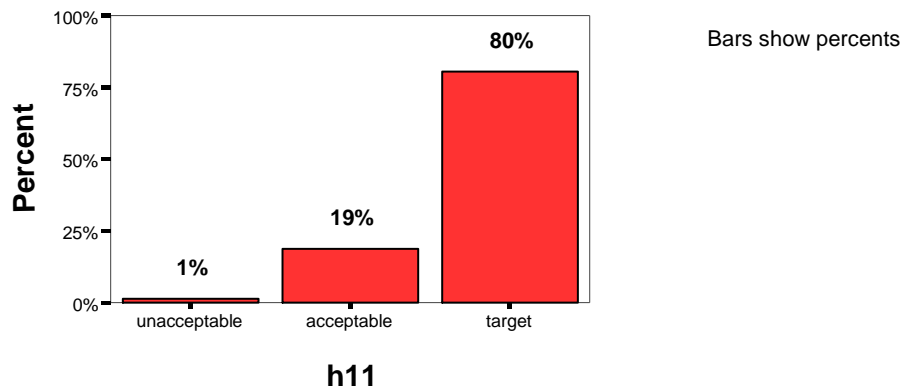
7.9/h9 Conducts learning activities in a logical sequence which are flexible and developmentally appropriate



7.10/h10 Provides illustration, examples, and application of the material

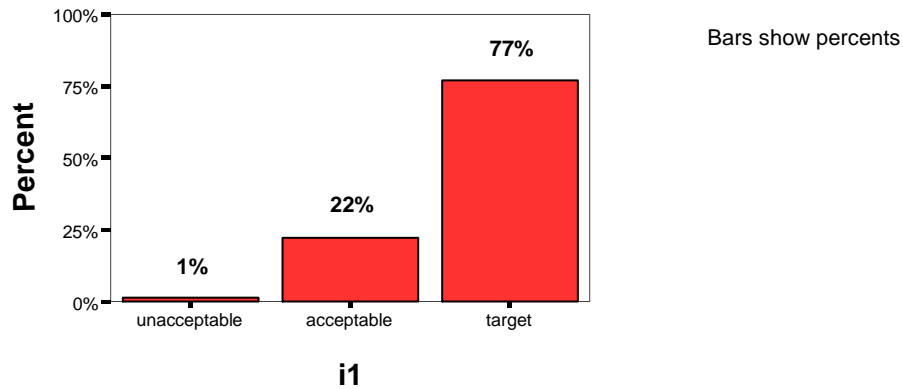


7.11/h11 Designs lessons that integrate technology into teaching

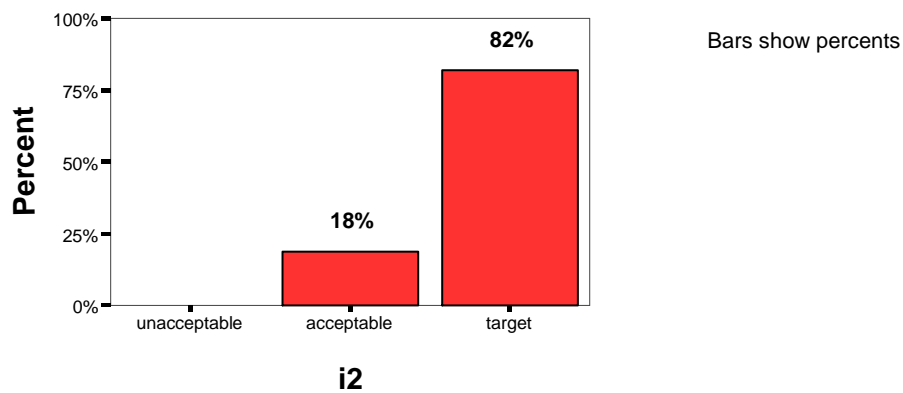


INTASC Standard 8: Assessment of Student Learning to Improve Teaching

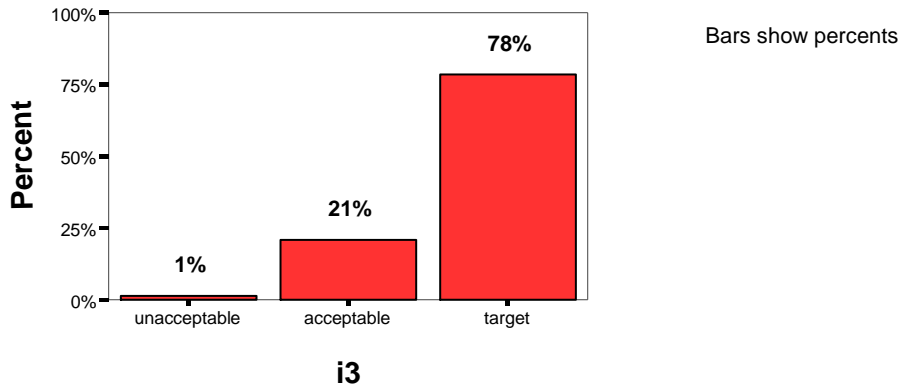
8.1/i1 Recognizes and encourages the special interests and abilities of individual students



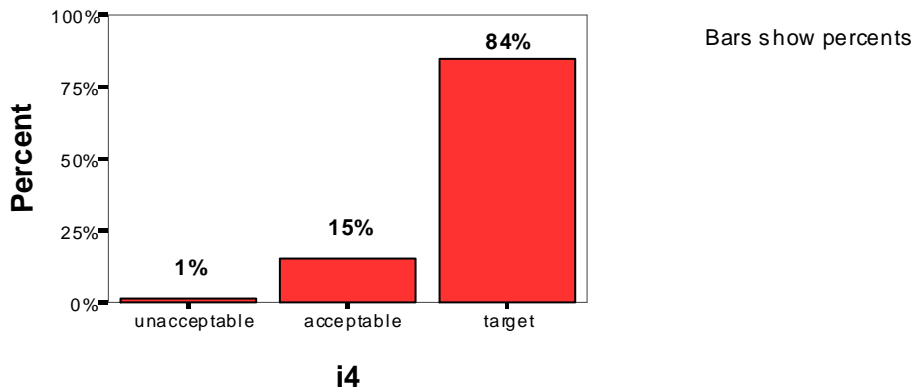
8.2/i2 Selects appropriate materials and procedures for assessing students' progress on objectives



8.3/i3 Uses evaluation instruments or procedures in order to monitor student progress and effectiveness of instruction

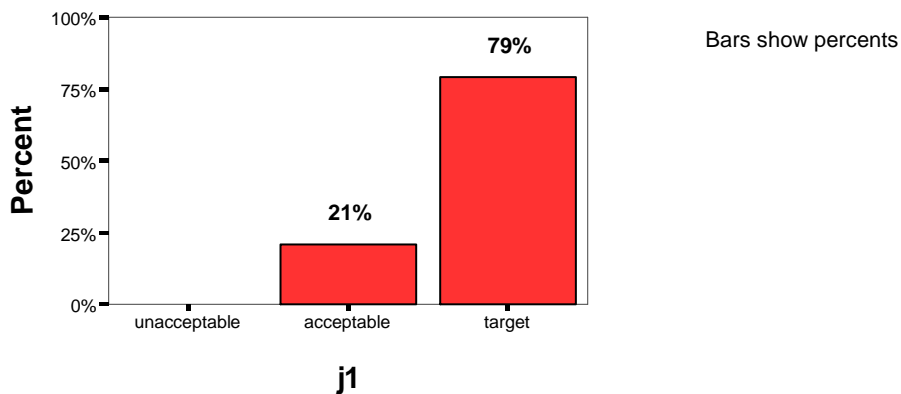


8.4/i4 Evaluates students on the basis of criteria that are aligned with instructional objectives

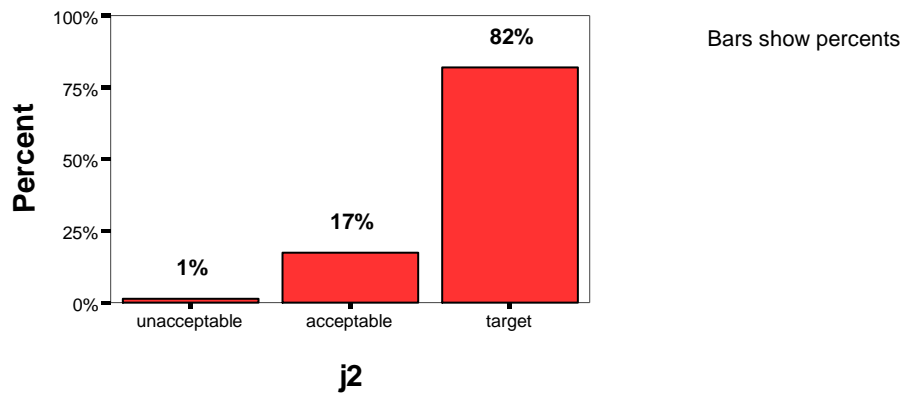


INTASC Standard 9: Reflection and Professional Development

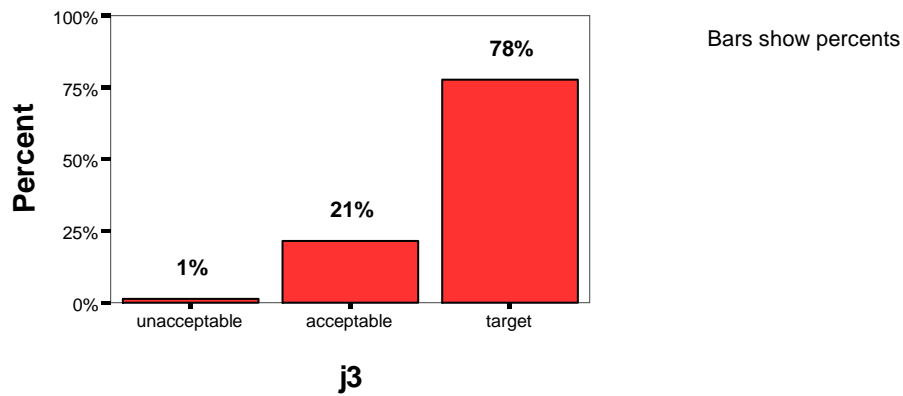
9.1/j1 Recognizes when students are deficient in the basic skills and provides or recommends corrective action



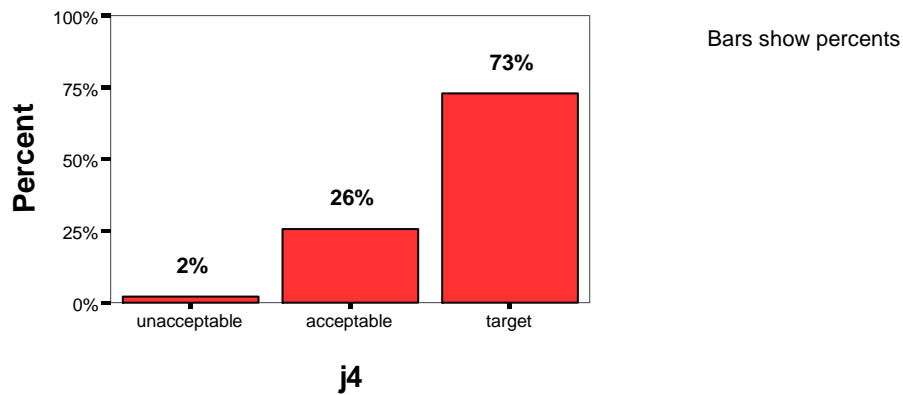
9.2/j2 Obtains and uses information from colleagues to assist students with special needs



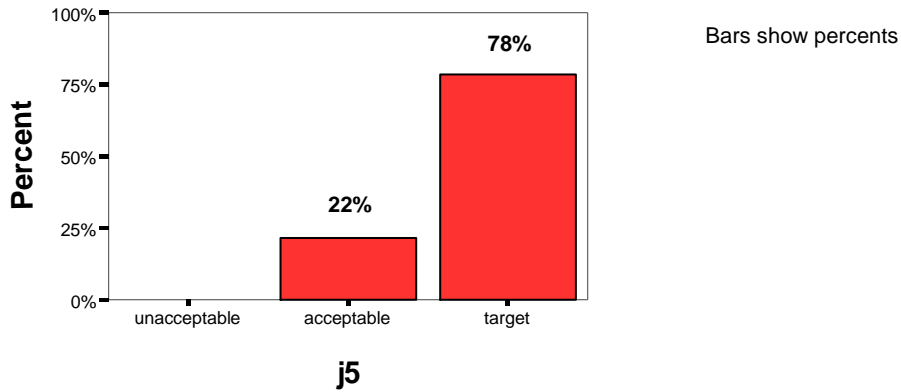
9.3/j3 Identifies students who require the assistance of a specialist



9.4/j4 Handles discipline fairly and consistently

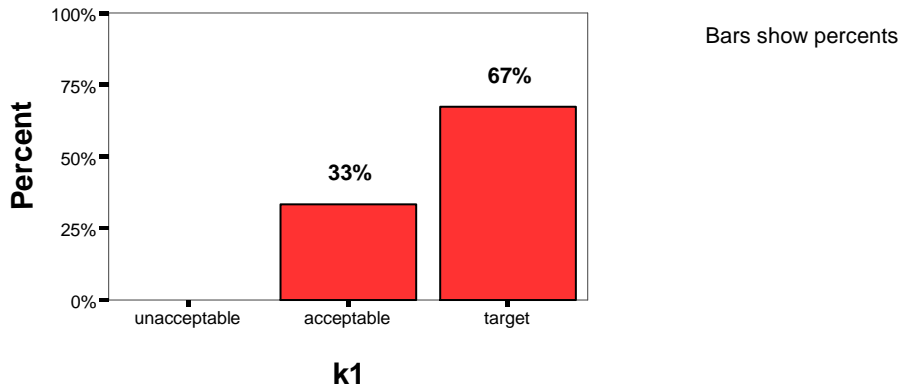


9.5/j5 Demonstrates ability to think about teaching and learning as both a reflective practitioner and educational leader

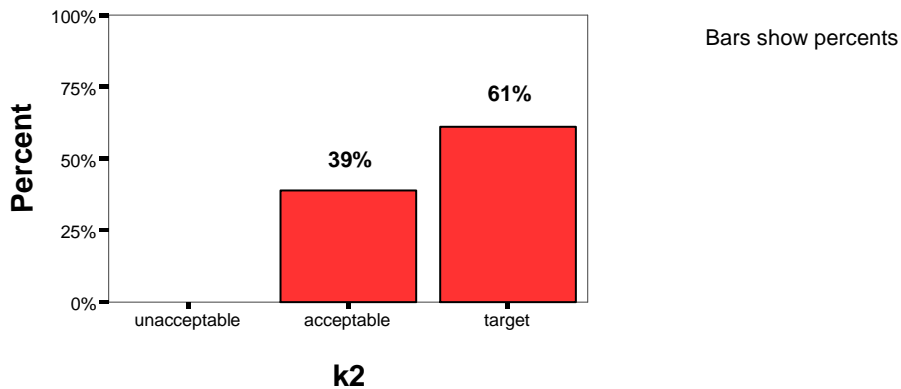


INTASC Standard 10: Partnerships with School and Community

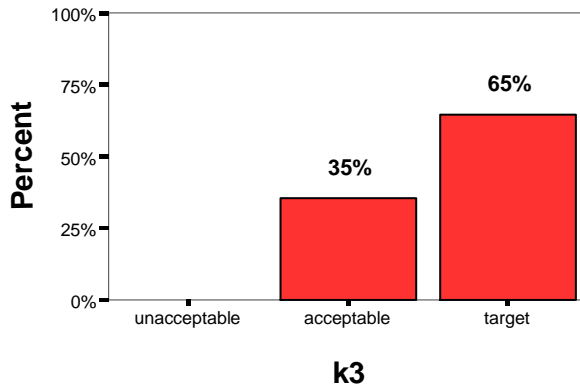
10.1/k1 Encourages and maintains the cooperative involvement and support of parents and community



10.2/k2 Provides opportunities for parents and community involvement

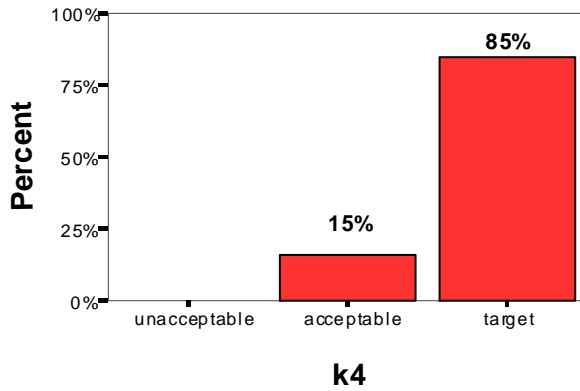


10.3/k3 Uses community resources in instruction



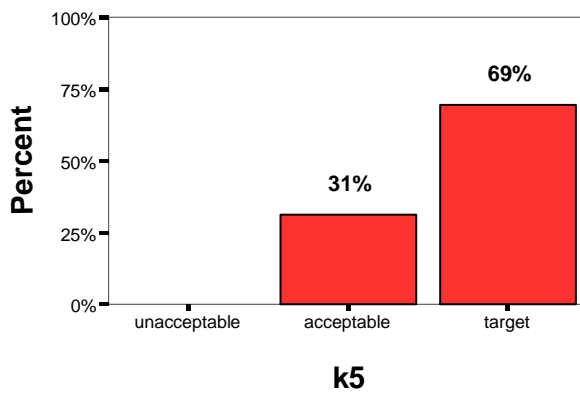
Bars show percents

10.4/k4 Understands the rights and responsibilities of students, parents, and teachers



Bars show percents

10.5/k5 Engages parents in the learning process



Bars show percents