



Southern Connecticut State University

**CCSAR – Center for Community
and School Action Research**

<http://ccsar.southernct.edu> Tel: (203) 392-6439

Norris M. Haynes, Ph. D., Director

Maureen Gilbride-Redman, M.P.A., Research Associate, Assistant Director

James M. Granfield, Ph.D., Interim Dean, School of Education

Prepared by:

Daniel J. Brady, M.S.

Jamie O'Meara-Cartwright, M.S.

Maureen Gilbride-Redman, M.P.A.

Norris M. Haynes, Ph.D.

Academic Year 2007-2008

A Report on SCSU Student Teaching Performance
An Analysis of Student Teaching Evaluation Responses
Submitted by Cooperating Teachers
Spring 2008

A Report on SCSU Student Teaching Performance
An Analysis of Student Teaching Evaluation Responses
Submitted by Cooperating Teacher – Spring 2008

The Southern Connecticut State University (SCSU) School of Education (SOE) distributes the *Evaluation of Student Teaching Performance (ESTP)* survey to Cooperating Teachers who are working with SCSU teacher candidates during their student teaching placement.

The purpose of the *ESTP* survey is to determine how well the SOE has prepared teacher candidates to student teach, and to meet the competency requirements stipulated by the accrediting agencies for SCSU’s various programs. Cooperating Teachers are also encouraged to use the *ESTP* survey as a basis for discussing candidates’ competencies throughout the student teaching experience. The *ESTP* survey addresses candidates’ behavior and performance relative to the Interstate New Teachers Assessment and Support Consortium (INTASC) standards and the requirements listed in Connecticut’s *Common Core of Teaching*.

The specific goals of collecting and analyzing the Spring 2008 *ESTP* surveys are:

- to determine Cooperating Teachers’ perceptions of SCSU student teachers and their level of competency;
- to obtain ideas and suggestions for improving the quality of the field experience that SCSU provides its student teachers; and
- to meet the needs of Connecticut schools for highly trained and well-prepared classroom teachers.

Method

Participants

One hundred sixty *ESTP* surveys were collected and analyzed for this study. These surveys represent the evaluation of teacher candidates who were student teaching during the spring of 2008 in (1) a second eight-week student teaching placement, or (2) a ten-week student teaching placement. Candidates evaluated represented a variety of majors and programs and were seeking certification in Elementary, Secondary, or K-12 Education. The distribution of programs leading to certification can be viewed in Table 1.

Table 1 - Program of Study/Certification Area

Program of Study	Level of Certification		
	Elementary	Secondary	K-12
Early Childhood	10		
Early Childhood/ Special Education Collaborative	6		
Elementary Education	36		
Elementary/ Special Education	3		
Biology		3	
Earth Science		1	
English		19	
General Science		2	

Social Studies		8	
Spanish		3	
Art			13
Physical Education			12
Special Education			14
Total	55	36	39

* (n=130) 30 surveys did not indicate an area of certification

Apparatus

The *ESTP* survey is an evaluation instrument developed and used by the School of Education. Part one (A) of the survey requests demographic information and the second part (sections B-K) of the survey consists of 66 items, divided into the ten INTASC competency areas. The ten competency areas are listed below, along with the individual items that define each competency standard. Space is provided after each competency area for additional comments. There is a section at the end of the survey for ‘*Summary Statements*,’ 3 overall scores for ‘planning, teaching, and impact on student learning’, and the assignment of a final pass or fail grade. Cooperating Teachers evaluate student teacher candidates using the following 3-point scale:

- 1 = Unacceptable or Met- Demonstrates minimal progress toward objective
- 2 = Acceptable or Met Demonstrates consistent achievement
- 3 = Target or Met+ Demonstrates exemplary achievement of objective.
- N/A = No opportunity or not applicable

The 10 competency areas align with the Interstate New Teachers Assessment and Support Consortium (INTASC): *Model Standards for the Beginning Teacher Licensing and Development* and the standards set by the accrediting agencies for SCSU’s various programs, e.g., CSDE, NCATE, etc. The 10 INTASC Standards are:

- I.** Knowledge of Subject Matter, items 1.1-1.6 (b);
- II.** Knowledge of Human Development and Learning, 2.1-2.4 (c);
- III.** Instruction is Adapted to Meet Diverse Learners, 3.1-3.4 (d);
- IV.** Use of Multiple Instructional Strategies and Resources, 4.1-4.10 (e);
- V.** An Effective Learning Environment is Created, 5.1-5.11 (f);
- VI.** Effective Communication to Foster Inquiry & Collaboration, 6.1-6.6 (g);
- VII.** Lesson Planning, 7.1-7.11 (h);
- VIII.** Assessment of Student Learning to Improve Teaching, 8.1-8. 4(i);
- IX.** Reflection and Professional Development, 9.1-9.5 (j);
- X.** Partnerships with School and Community, 10.1-10.5 (k)

Internal consistency reliabilities were calculated for the survey as well as for each INTASC standard. The internal consistency reliability for the instrument was an alpha (Cronbach’s) of .918 and the estimates of internal consistency reliability for the ten INTASC standards ranged from .755 to .890 (Cronbach’s alpha).

Procedure

The SOE Office of Student Teaching provided CCSAR with the *Evaluation of Student Teaching Performance (ESTP)* surveys collected during the spring 2008 semester. Data collection for this study ended in June 2008.

CCSAR reviewed each survey to ensure that it was for the correct period (spring 2008, second eight-weeks and ten-week placements only) and completed on the appropriate evaluation sheet. Surveys that did not meet both of these requirements were discarded. A coding frame was then developed and each survey assigned a unique identification number.

Data were then entered into SPSS Statistical Software using the following scale: 1 = Unacceptable or Met-, 2 = Acceptable or Met, 3 = Target or Met+, and 9 = N/A. Next, researchers recoded all responses of N/A to 'system missing' to address only those behaviors that were assessed by the Cooperating Teachers. Ten new variables were created to measure candidates' performance in the INTASC standard areas. This was accomplished by summing together items that collectively defined each standard, and then calculating the mean and standard deviation score for that standard. Statistical indices were also calculated for each survey item to provide a quick, yet comprehensive, view of the distribution of data.

Results

Descriptive statistics summarizing the distribution of item and INTASC scores were developed using graphical representation and computing descriptive statistical indices, e.g., mean, standard deviations, etc. The results from the descriptive analyses indicated that the mean item scores ranged from **M = 2.61, SD = 0.489** for item 4.4 '*Engages students in selecting their own learning objectives and activities*' to **M = 2.96, SD = 0.206** for item 5.8 '*Demonstrates ethical behavior.*' The ten INTASC standard mean scores ranged from **M = 2.78, SD = 0.359** for **Standard 10: 'Partnerships with School and Community'** to **M = 2.87, SD = 0.237** for **Standard 7: 'Lesson Planning'**. The mean and standard deviations scores for each item and the INTASC Standards, and frequency bar charts for each item, are located in the Appendix.

It is noteworthy that INTASC Standard 10 (Section K) items received a large number of N/A's or non responses. Thirty-two percent of the cooperating teachers did not respond to Item K1, 44% to K2, 44% to K3, 12% to K4, and 46% did not respond to K5. Also, 61% of the cooperating teachers did not respond to Item F9 in INTASC Standard 5.

Overall scores for planning, teaching, and impact on student learning, were provided using the same 3 point scale as the survey items. Approximately 50% of the student teachers received these overall scores.

Table 2 - Overall Mean Scores and Standard Deviation (for 50% of candidates)

	Mean Score	Standard Deviation
Overall score on planning	2.86	0.347
Overall score on teaching	2.90	0.305
Overall score/impact on student learning	2.90	0.304

Qualitative Analysis

The majority of cooperating teachers had positive comments about their student teachers. They praised the student teachers' knowledge of their content area, and their ability to create and change lessons plans based on students' needs. The cooperating teachers felt the teacher candidates had developed a good rapport with the students, dealt with discipline fairly, acted professionally, and had a positive attitude towards the student teaching experience.

There were isolated cases where the student teacher did not perform as expected. A few cooperating teachers mentioned poor lesson planning, an inability to revise instruction, lack of moderating skills, and the inability to set due dates for projects, as areas of concern for some of the candidates. One teacher candidate had a hard time taking constructive criticism and acted unprofessionally, and another individual was timid and needed to speak up more during conferences, PPTs, and dual instruction.

Discussion

SCSU teacher candidates were well prepared for their student teaching experiences. Overall the cooperating teachers rated SCSU's student teachers as above the "acceptable" category on each of the individual items, with mean scores ranging from 2.61 to 2.96, as well as on the ten INTASC Standards with mean scores ranging from 2.78 to 2.87. The qualitative responses provided by the cooperating teachers, support these mean scores and affirms the professional nature of SCSU student teaching candidates.

APPENDIX

Table 1 - The Ten INTASC Standards and the Items that Define Each Standard

Scale: 1 = Met- or unacceptable, 2 = Met or acceptable, 3 = Met+ or target

	Mean Score	Standard Deviation
INTASC Standard I -Knowledge of Subject Matter Section B (b1 – b6)	2.87	0.252
1.1 Demonstrates proficiency in reading, writing, and mathematics	2.91	0.286
1.2 Knows and understands the major principles and concepts of the material to be taught	2.88	0.325
1.3 Possesses accurate and up-to-date principles of the material taught	2.86	0.352
1.4 Understands the purpose and value of the material taught	2.92	0.274
1.5 Is able to formulate meaningful questions about the subject matter	2.81	0.392
1.6 Knows appropriate sources of additional information about the materials to be taught	2.86	0.352
INTASC Standard 2 -Knowledge of Human Development and Learning Section C (c1- c4)	2.78	0.337
2.1 Understands how the following areas of development relate to planning and organization: physical, social, emotional, and intellectual	2.78	0.413
2.2 Uses student strengths as a basis of growth and plans instruction accordingly	2.83	0.379
2.3 Understands how learning occurs, as well as how students construct knowledge, acquire skills, and develop habits of mind	2.78	0.418
2.4 Uses basic principles of learning and human development to enhance learning of students from diverse backgrounds	2.76	0.426
INTASC Standard 3- Instruction is Adapted to Meet Diverse Learners Section D(d1-d4)	2.81	0.320
3.1 Plans instructional activities which provide for individual differences	2.76	0.430
3.2 Matches teaching styles and methods with the learning situation and the learning style of students	2.82	0.389
3.3 Effectively implements instructional plans and uses appropriate instructional techniques	2.84	0.383
3.4 Demonstrates sensitivity to community and cultural norms and adapts instruction accordingly	2.84	0.364
INTASC Standard 4 -Use of Multiple Instructional Strategies and Resources Section E (e1-e10)	2.79	0.261
4.1 Uses a variety of instructional methods and media to address the needs of all students	2.81	0.395
4.2 Uses a balance of individual, small, and large group instructional arrangements	2.83	0.378
4.3 Provides instructional activities that foster student involvement	2.86	0.365
4.4 Engages students in selecting their own learning objectives and activities	2.61	0.489
4.5 Poses probing questions to stimulate students to recall, analyze, synthesize, and evaluate	2.75	0.436
4.6 Presents opportunities that foster critical thinking and problem solving skills	2.82	0.384
4.7 Presents material at levels appropriate to the needs, interests, abilities, and backgrounds of students	2.87	0.333
4.8 Recognizes the conditions and needs of special education students	2.81	0.394
4.9 Meets the needs of exceptional students	2.72	0.448

4.10 Values the development of students' critical thinking, independent problem solving, and performance capabilities	2.87	0.333
INTASC Standard 5 -An Effective Learning Environment is Created Section F (f1-f11)	2.86	0.244
5.1 Maintains classroom routines and procedures	2.85	0.360
5.2 Uses instructional time effectively, paces instructional activities appropriately, and maximizes students' time on task	2.73	0.457
5.3 Provides and maintains an attractive and orderly learning environment	2.83	0.375
5.4 Maintains appropriate behavior standards for students in the learning environment	2.81	0.394
5.5 Develops an atmosphere which fosters self-discipline	2.78	0.433
5.6 Works cooperatively with colleagues and administrators	2.94	0.262
5.7 Follows the policies, procedures, and curricula of the school district	2.96	0.206
5.8 Demonstrates ethical behavior	2.96	0.193
5.9 Conducts effective parent/teacher conference(s)	2.76	0.429
5.10 Promotes positive interpersonal relations based upon mutual respect	2.90	0.324
5.11 Creates a positive learning environment that fosters curiosity and intrinsic motivation	2.85	0.362
INTASC Standard 6- Effective Communication to Foster Inquiry and Collaboration Section G (g1-g6)	2.84	0.277
6.1 Provides directions and explanations in a clear, coherent, logical manner	2.76	0.441
6.2 Provides for two-way communication with students	2.90	0.298
6.3 Establishes rapport and fosters positive reinforcement through verbal and non-verbal communication	2.91	0.311
6.4 Assists and encourages students to research issues and questions of concern to them	2.78	0.418
6.5 Promotes students' ability to effectively communicate ideas and questions of concern to them	2.86	0.346
6.6 Understands how cultural and general differences can affect communication in the classroom	2.82	0.384
INTASC Standard 7-Lesson Planning Section H (h1-h11)	2.87	0.237
7.1 Plans instruction to achieve selected objectives	2.87	0.334
7.2 Identifies and sequences goals of instruction	2.83	0.374
7.3 Identifies and sequences objectives within lessons	2.85	0.361
7.4 Identifies teaching procedures and sequences learning activities	2.86	0.347
7.5 Revises instruction on the basis of student comments, questions, and performance	2.84	0.383
7.6 Recognizes and understands the worth of all students and the opportunities that racial, cultural, sexual, and religious diversity present in the classroom	2.91	0.286
7.7 Demonstrates sensitivity to and for the needs and feelings of all students	2.91	0.285
7.8 Outlines expectations for all students in a clear manner	2.85	0.371
7.9 Conducts learning activities in a logical sequence that are flexible and developmentally appropriate	2.92	0.276
7.10 Provides illustration, examples, and application of the material	2.90	0.295
7.11 Designs lessons that integrate technology into teaching	2.83	0.375

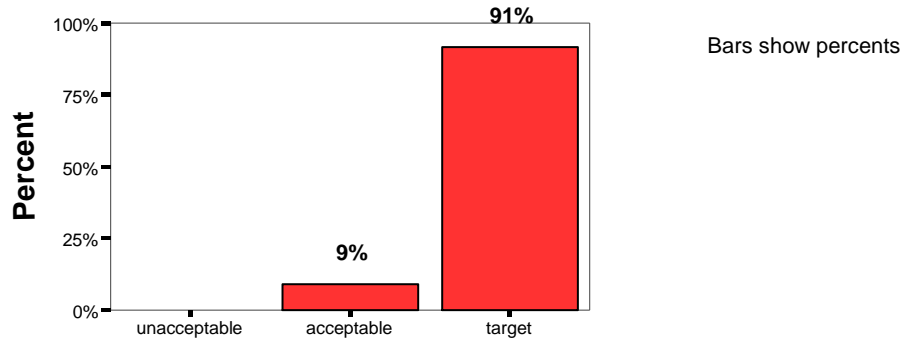
INTASC Standard 8- Assessment of Student Learning to Improve Training Section I (i1-i4)	2.84	0.295
8.1 Recognizes and encourages the special interests and abilities of individual students	2.84	0.370
8.2 Selects appropriate materials and procedures for assessing students' progress on objectives	2.84	0.371
8.3 Uses evaluation instruments or procedures in order to monitor student progress and effectiveness of instruction	2.82	0.384
8.4 Evaluates students on the basis of criteria that are aligned with instructional objectives	2.87	0.342
INTASC Standard 9-Reflection and Professional Development Section J (j1-j5)	2.83	0.289
9.1 Recognizes when students are deficient in the basic skills and provides or recommends corrective action	2.83	0.380
9.2 Obtains and uses information from colleagues to assist students with special needs	2.87	0.341
9.3 Identifies students who require the assistance of a specialist	2.81	0.393
9.4 Handles discipline fairly and consistently	2.81	0.408
9.5 Demonstrates ability to think about teaching and learning as both reflective practitioner and educational leader	2.85	0.382
INTASC Standard 10 -(Partnerships with School and Community Section K (k1-k5)	2.78	0.359
10.1 Encourages and maintains the cooperative involvement and support of parents and community	2.76	0.428
10.2 Provides opportunities for parents and community involvement	2.72	0.450
10.3 Uses community resources in instruction	2.78	0.418
10.4 Understands the rights and responsibilities of students, parents, and teachers	2.85	0.357
10.5. Engages parents in the learning process	2.77	0.425

B. SURVEY ITEM RESPONSES-FREQUENCY BAR CHARTS

** percents are valid*

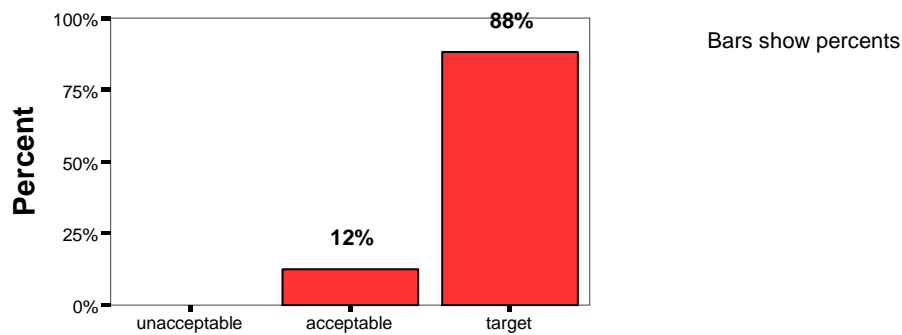
INTASC Standard 1: Knowledge of Subject Matter

1.1/b1 Demonstrates proficiency in reading, writing, and mathematics



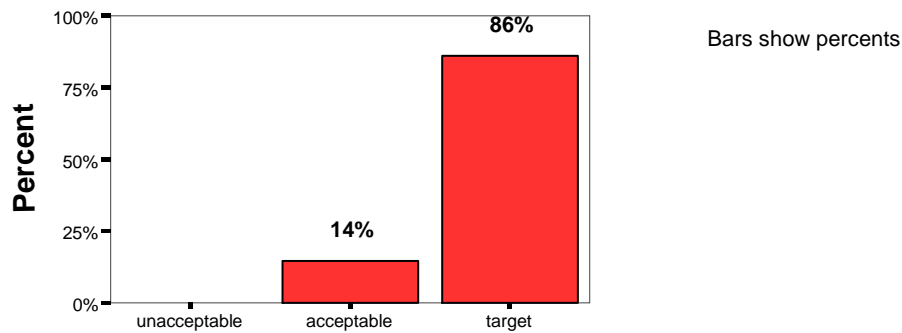
b1

1.2/b2 Knows and understands the major principles and concepts of the material to be taught



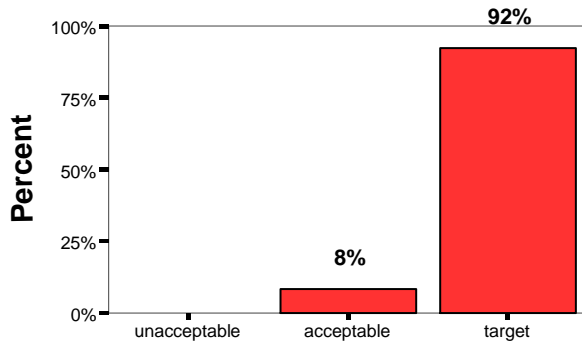
b2

1.2 /b3 Possesses accurate and up-to-date principles of the material taught



b3

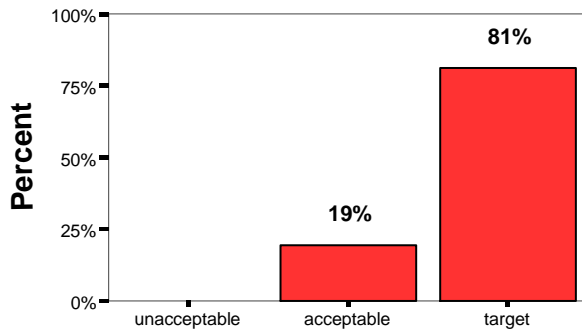
1.4 /b4 Understands the purpose and value of the material taught



Bars show percents

b4

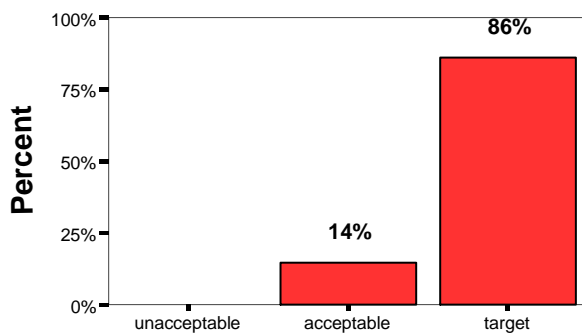
1.5/b5 Is able to formulate meaningful questions about the subject matter



Bars show percents

b5

1.6 /b6 Knows appropriate sources of additional information about the materials to be taught

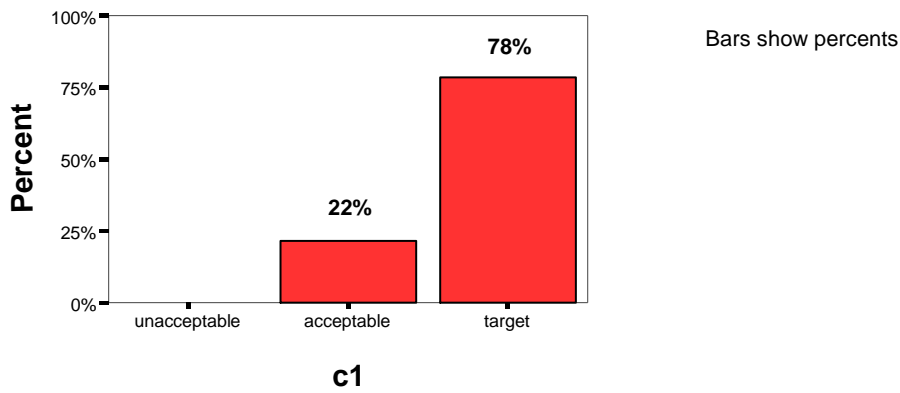


Bars show percents

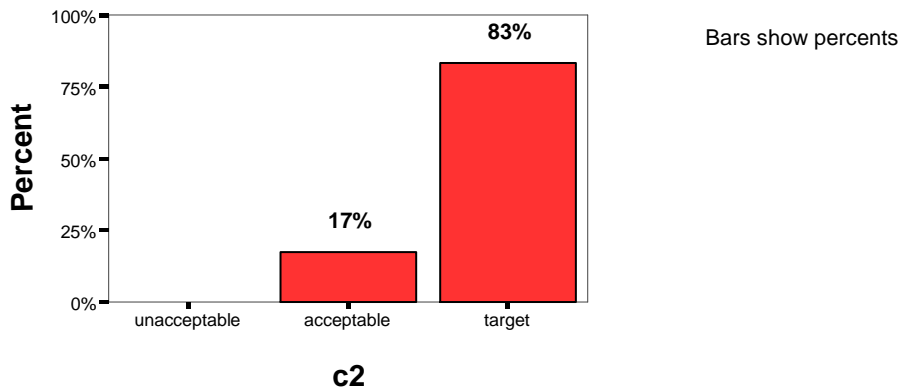
b6

INTASC Standard 2: Knowledge of Human Development and Learning

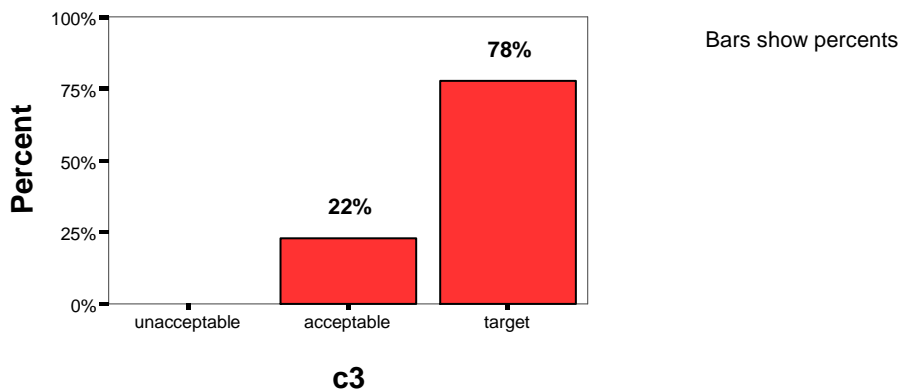
2.1/c1 Understands how the following areas of development relate to planning and organization: physical, social, emotional, and intellectual



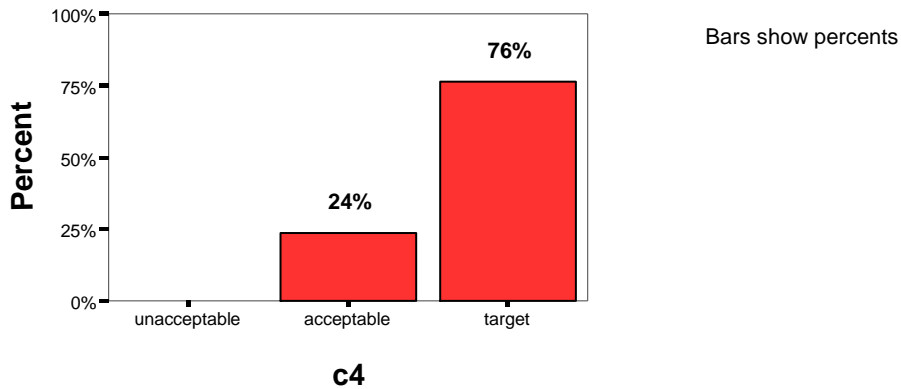
2.2/c2 Uses students' strengths as a basis of growth and plans instruction accordingly



2.3/c3 Understands how learning occurs, as well as how students construct knowledge, acquire skills, and develop habits of mind

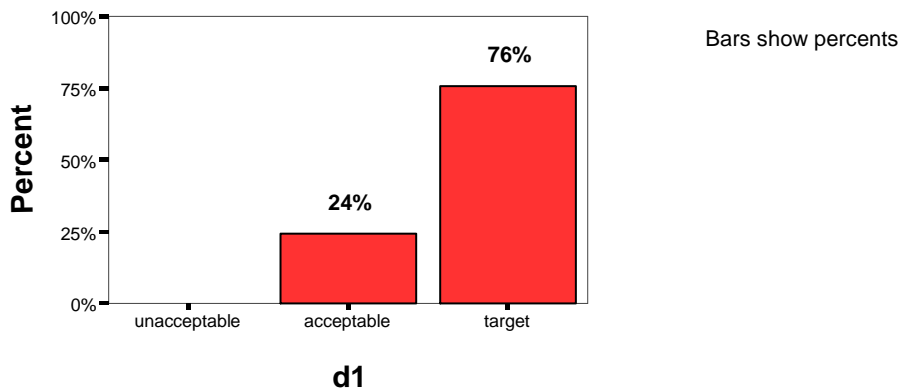


2.4/c4 Uses basic principles of learning and human development to enhance learning of students from diverse backgrounds

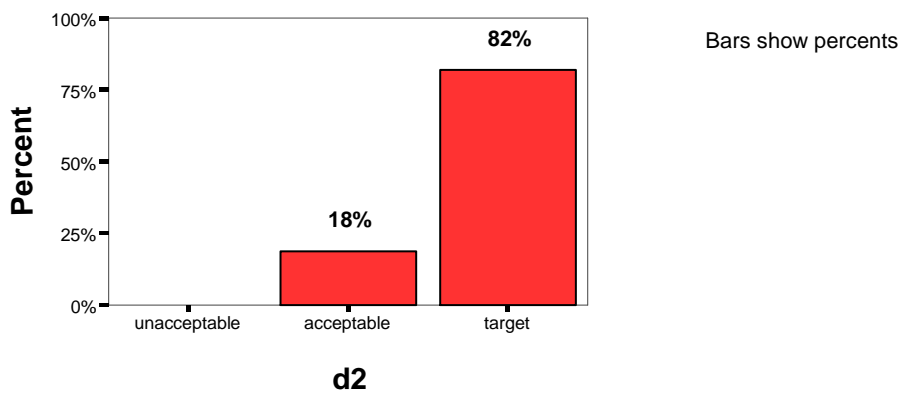


INTASC Standard 3: Instruction is Adapted to Meet Diverse Learners

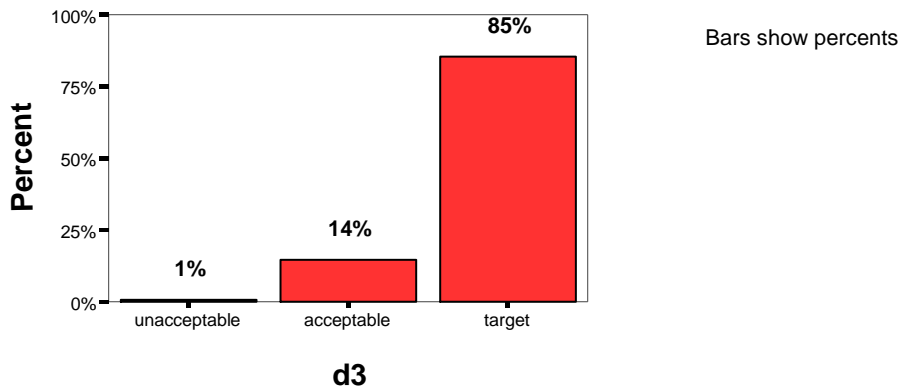
3.1/d1 Plans instructional activities that provide for individual differences



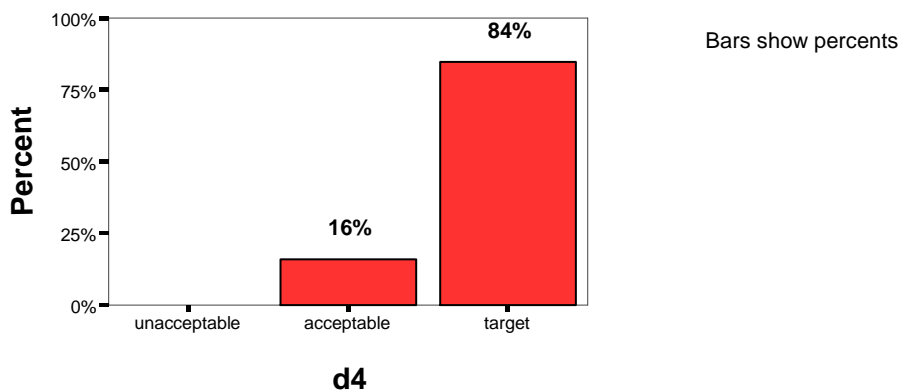
3.2/d2 Matches teaching styles and methods with the learning situation and the learning styles of students



3.3/d3 Effectively implements instructional plans and uses appropriate instructional techniques

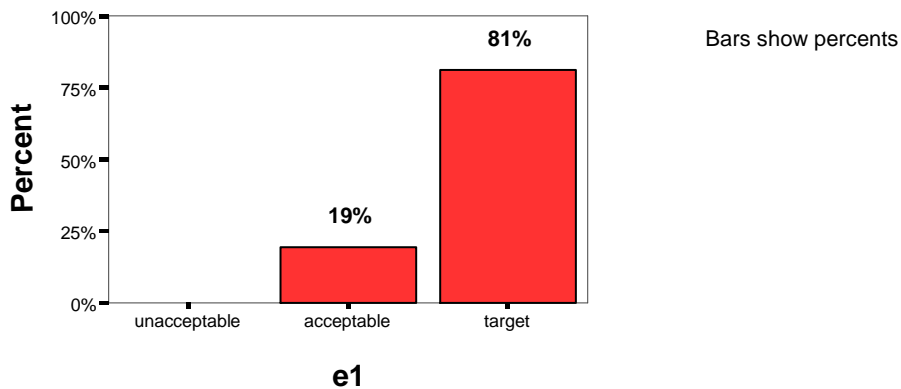


3.4/d4 Demonstrates sensitivity to community and cultural norms and adapts instruction accordingly

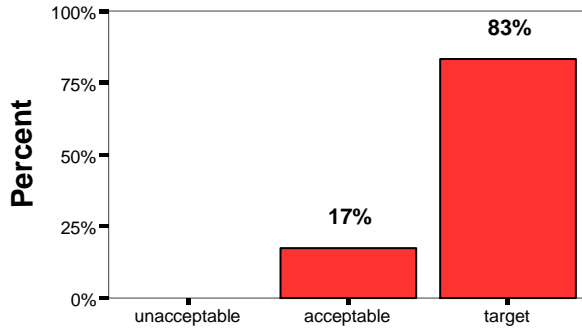


INTASC Standard 4: Use of Multiple Instructional Strategies and Resources

4.1/e1 Uses a variety of instructional methods and media to address the needs of all students



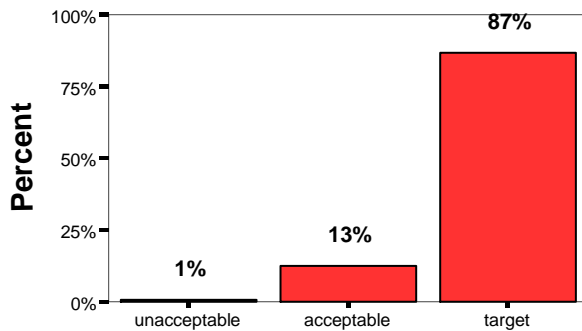
4.2/e2 Uses a balance of individual, small and large group instructional arrangements



Bars show percents

e2

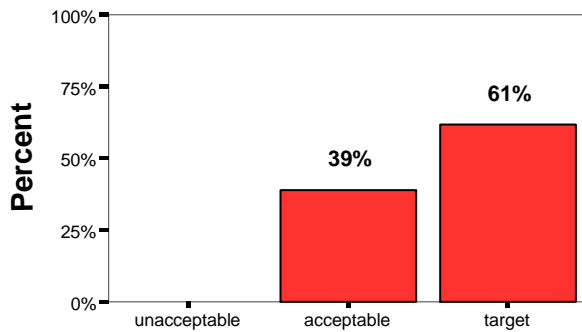
4.3/e3 Provides instructional activities that foster student involvement



Bars show percents

e3

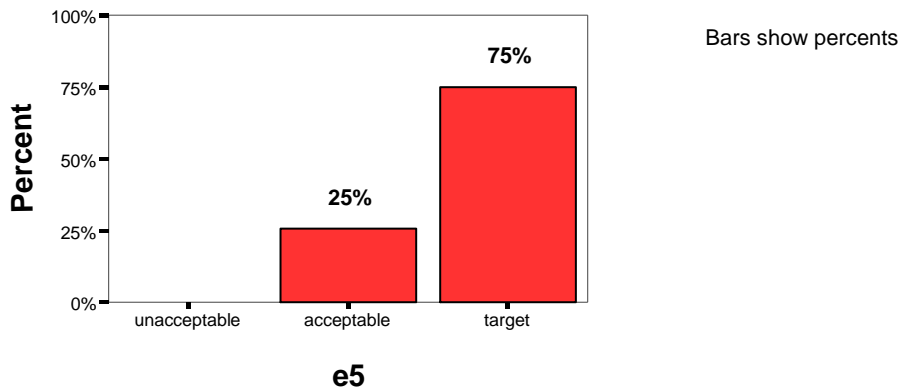
4.4/e4 Engages students in selecting their own learning objectives and activities



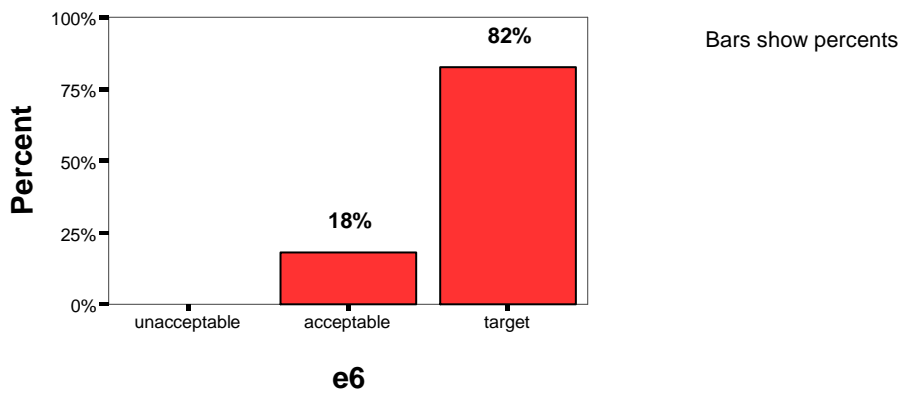
Bars show percents

e4

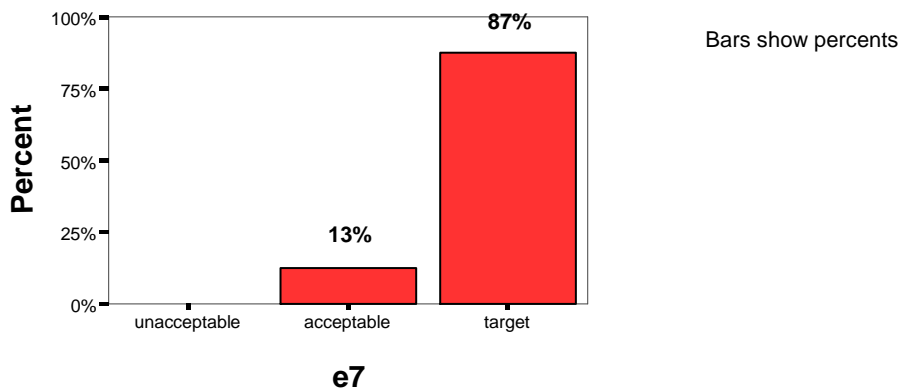
4.5/e5 Poses probing questions to stimulate students to recall, analyze, synthesize, and evaluate



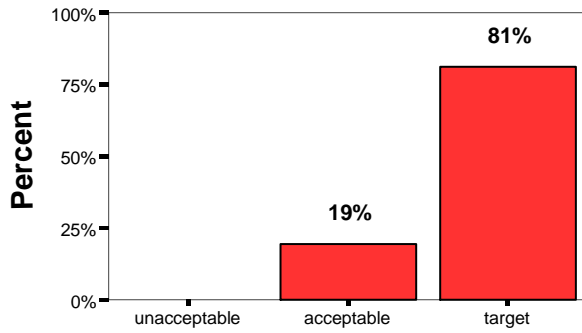
4.6/e6 Presents opportunities that foster critical thinking and problem solving skills



4.7/e7 Presents material at levels appropriate to the needs, interest, abilities, and backgrounds of students



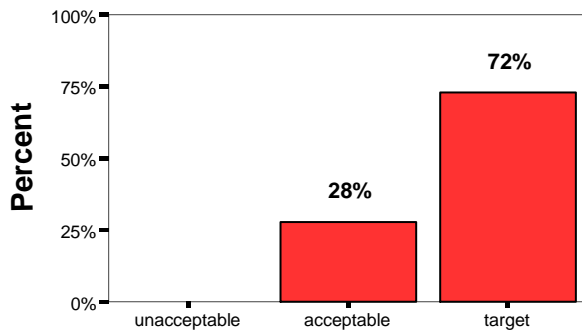
4.8/e8 Recognizes the conditions and needs of special education students



Bars show percents

e8

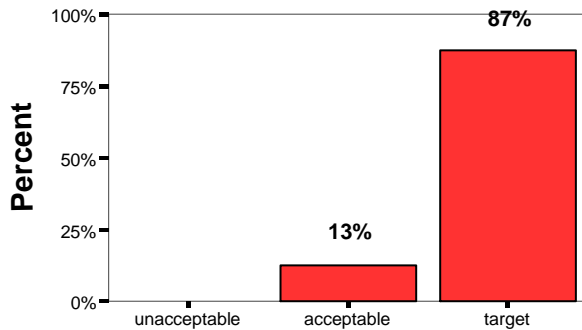
4.9/e9 Meets the needs of exceptional students



Bars show percents

e9

4.10/e10 Values the development of students' critical thinking, independent problem solving, and performance capabilities

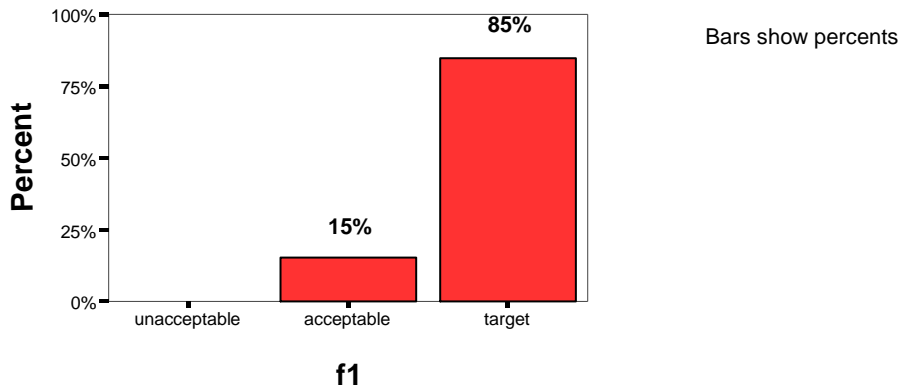


Bars show percents

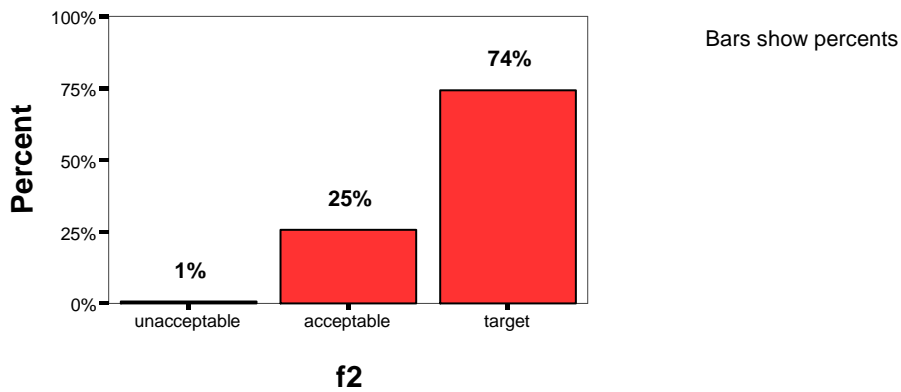
e10

INTASC Standard 5: An Effective Learning Environment is Created

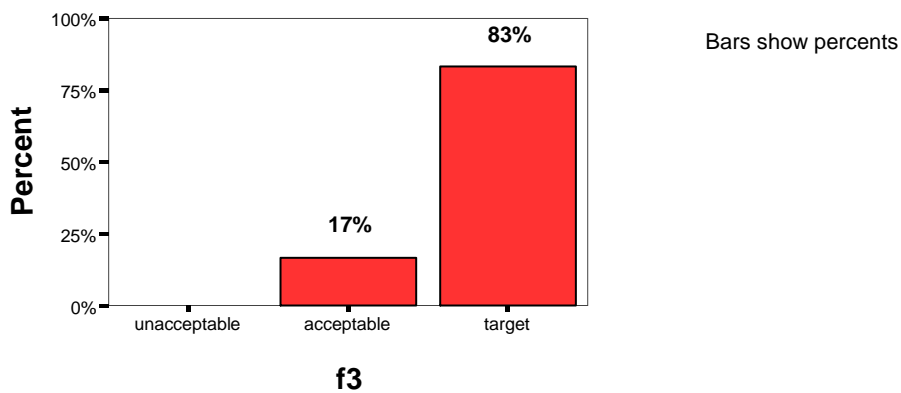
5.1/f1 Maintains classroom routines and procedures



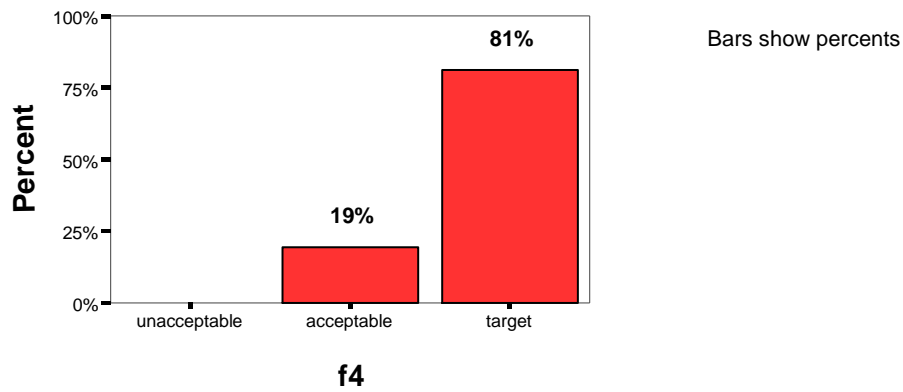
5.2/f2 Uses instructional time effectively, paces instructional activities appropriately, and maximizes students' time on task



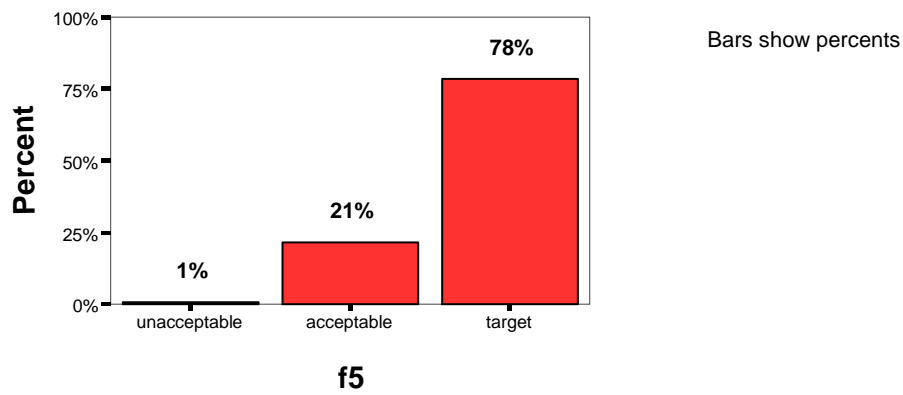
5.3/f3 Provides and maintains an attractive and orderly learning environment



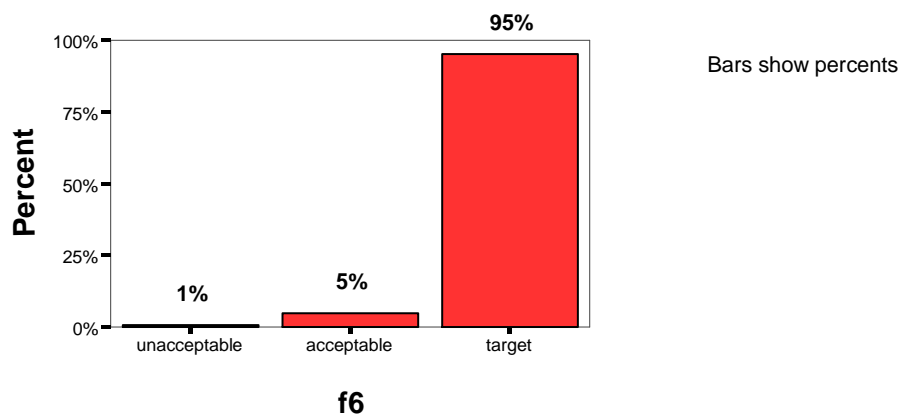
5.4/f4 Maintains appropriate behavior standards for students in the learning environment



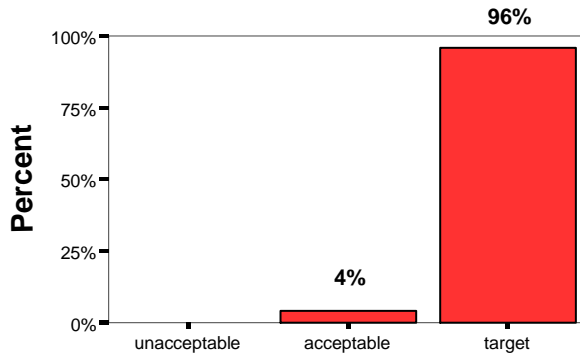
5.5/f5 Develops an atmosphere which fosters self-discipline



5.6/f6 Works cooperatively with colleagues and administrators



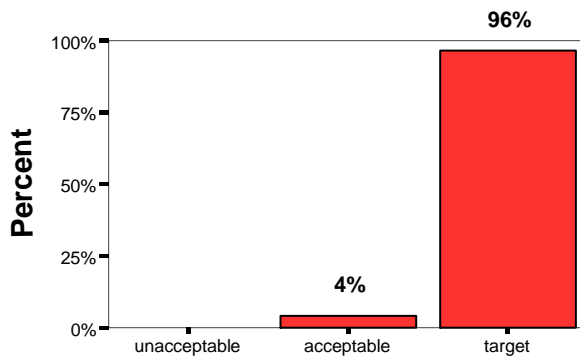
5.7 /f7 Follows the policies, procedures, and curricula of the school district



Bars show percents

f7

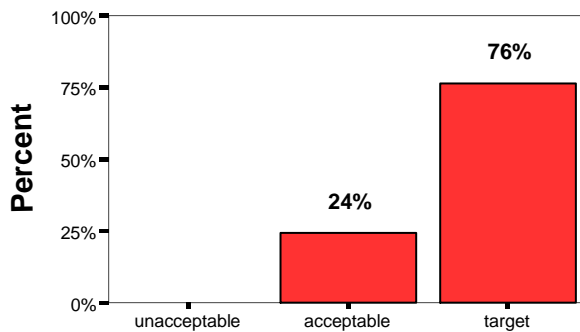
5.8/f8 Demonstrates ethical behavior



Bars show percents

f8

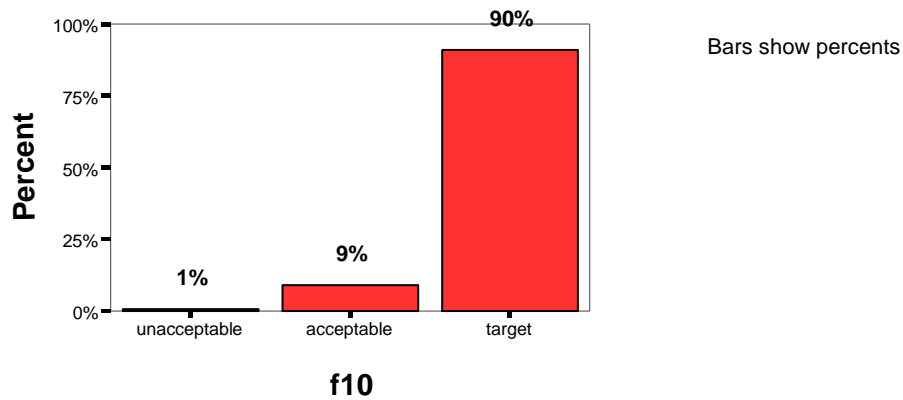
5.9/f9 Conducts effective parent/teacher conference



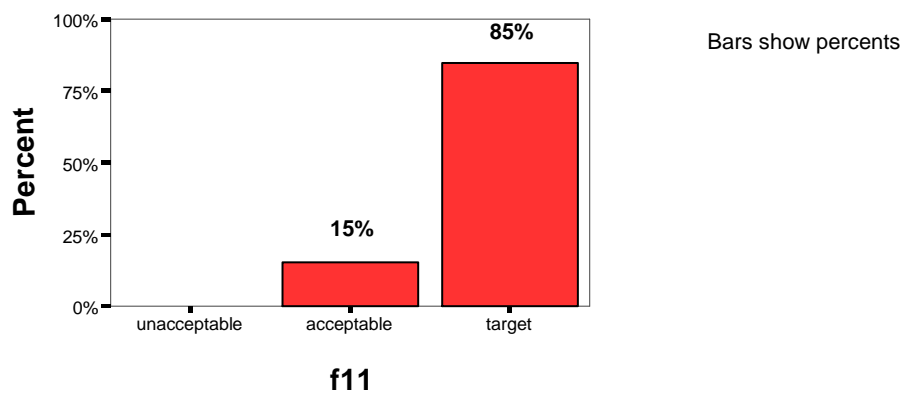
Bars show percents

f9

5.10/f10 Promotes positive interpersonal relations based upon mutual respect

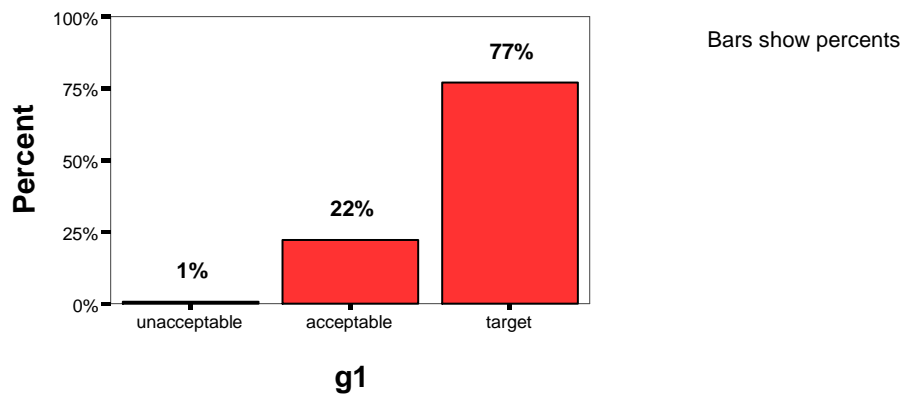


5.11/f11 Creates a positive learning environment that fosters curiosity and intrinsic motivation

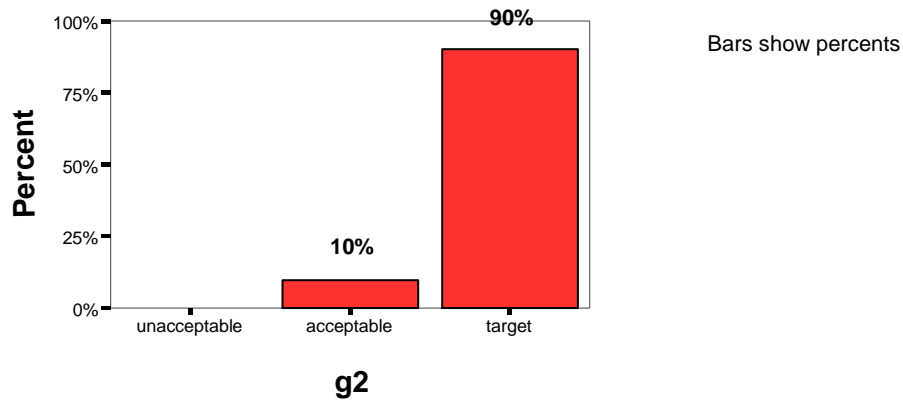


INTASC Standard 6: Effective Communication to Foster Inquiry and Collaboration

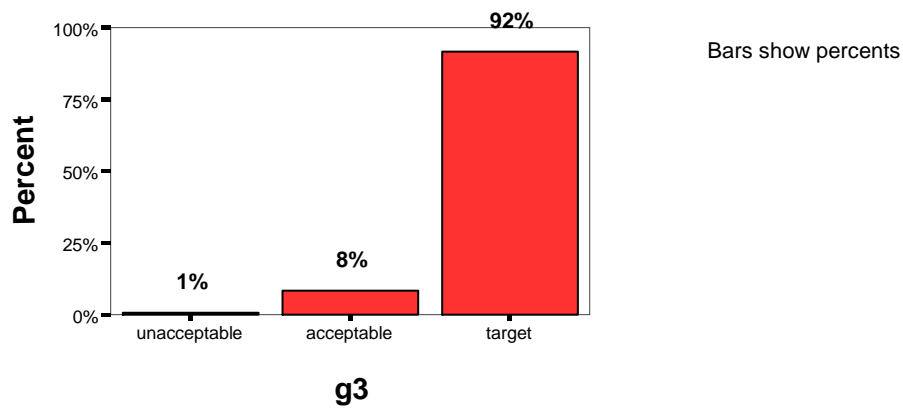
6.1/g1 Provides directions and explanations in a clear, coherent, logical manner



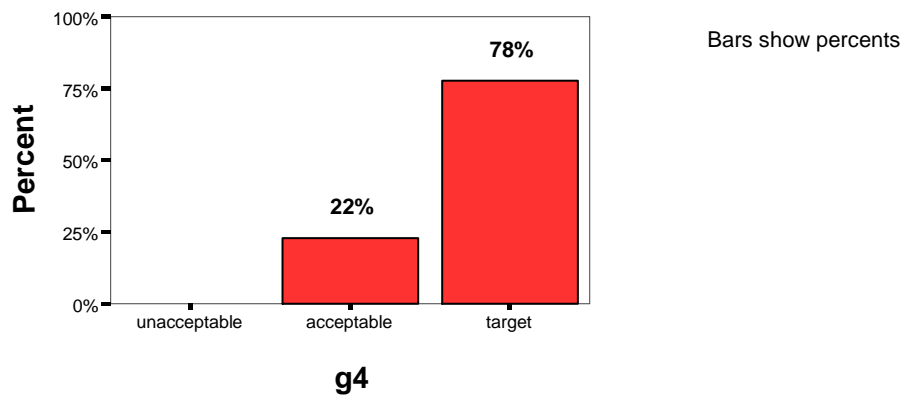
6.2/g2 Provides for two-way communication with students



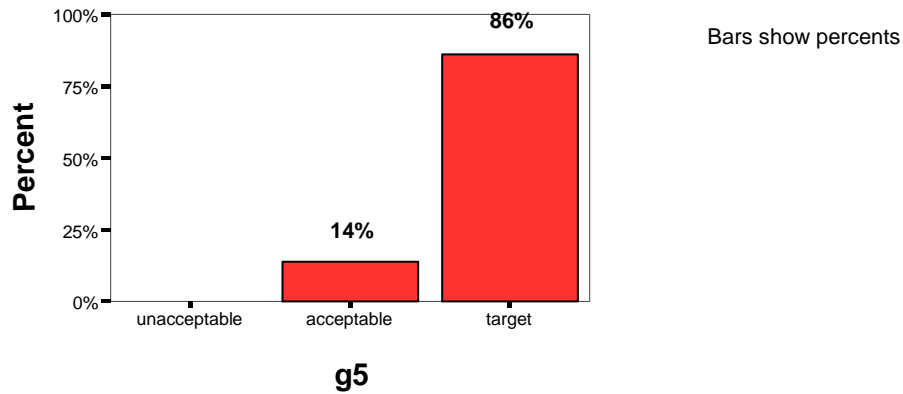
6.3/g3 Establishes rapport and fosters positive reinforcement through verbal and non-verbal communication



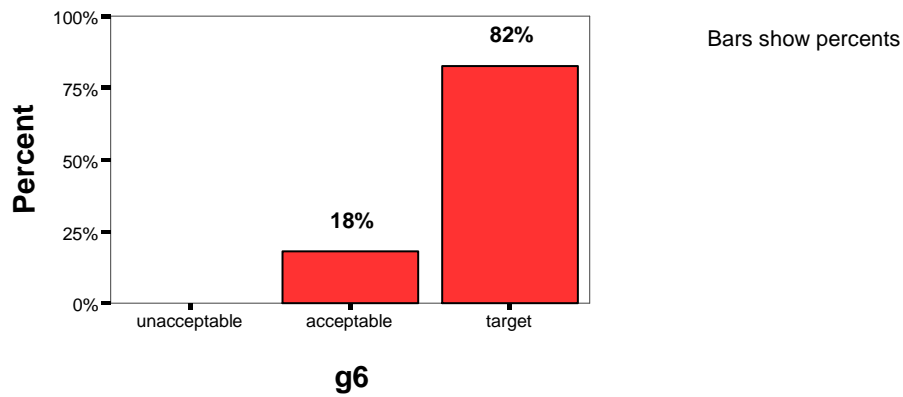
6.4/g4 Assists and encourages students to research issues and questions of concern to them



6.5/g5 Promotes students' ability to effectively communicate ideas and questions of concern to them

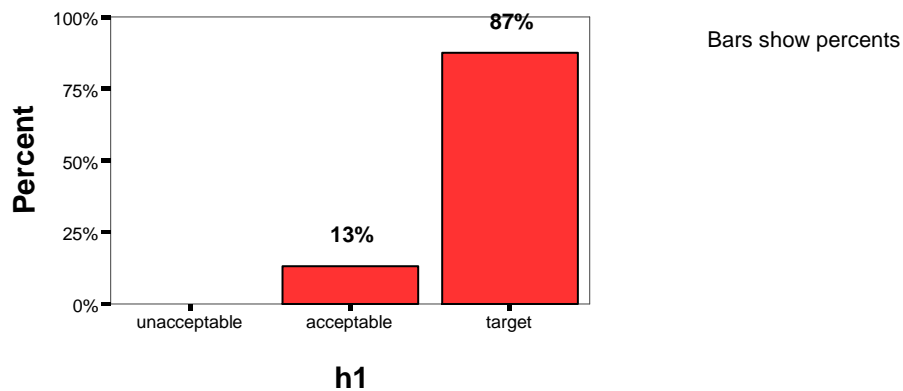


6.6/g6 Understands how cultural and general differences can affect communication in the classroom

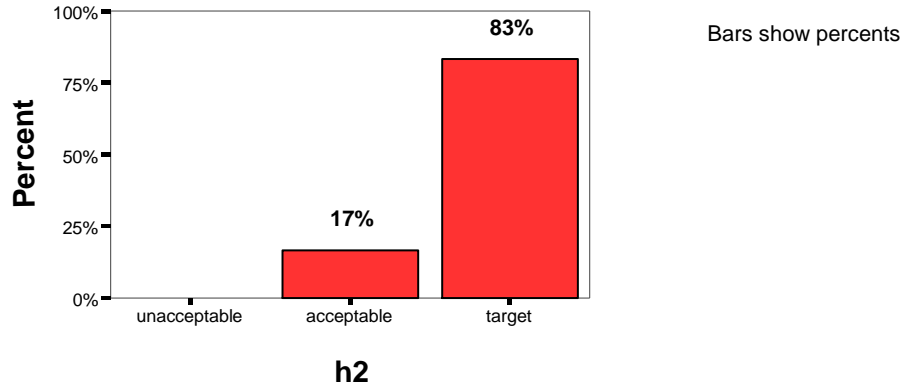


INTASC Standard 7: Lesson Planning

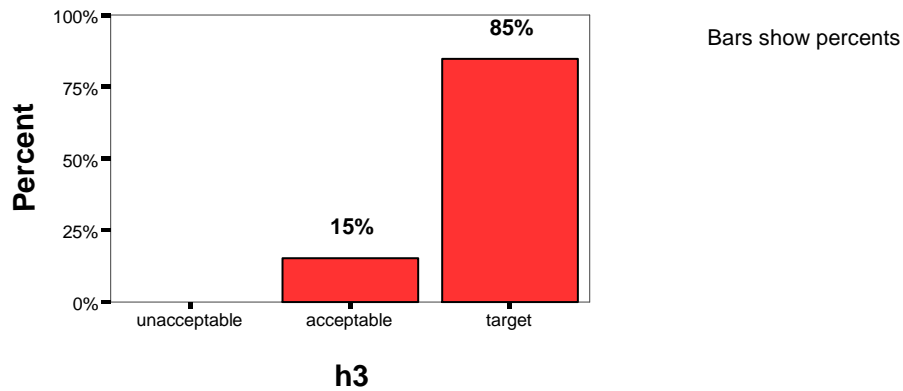
7.1/h1 Plans instruction to achieve selected objectives



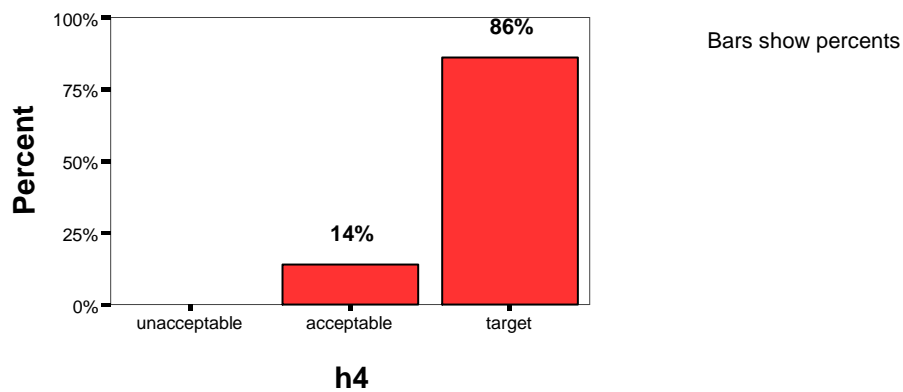
7.2/h2 Identifies and sequences goals of instruction



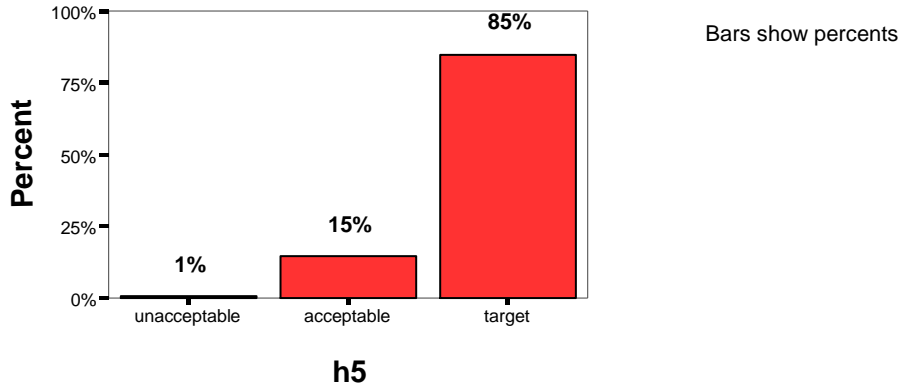
7.3/h3 Identifies and sequences objectives within lessons



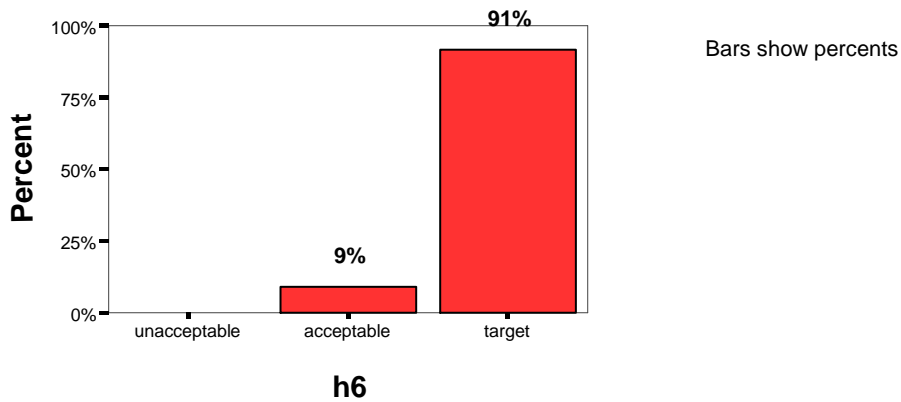
7.4/h4 Identifies teaching procedures and sequences learning activities



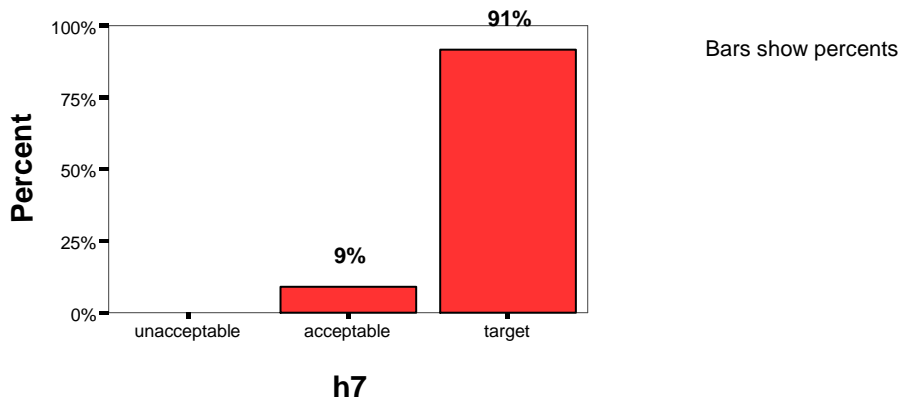
7.5/h5 Revises instruction on the basis of student comments, questions, and performance



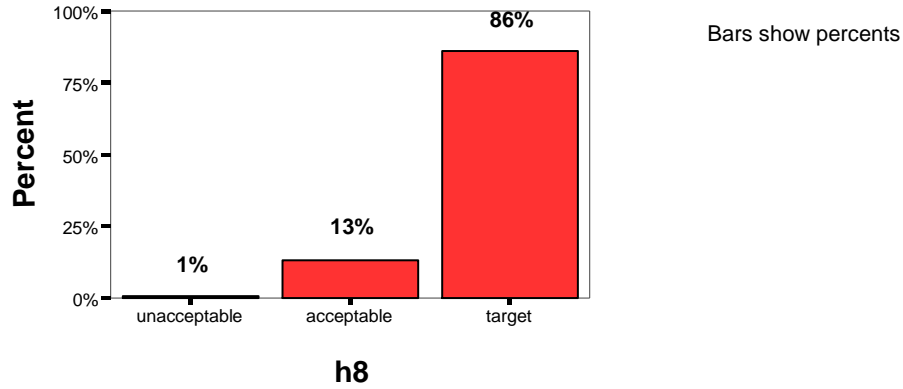
7.6/h6 Recognizes and understands the worth of all students and the opportunities that racial, cultural, sexual, and religious diversity present in the classroom



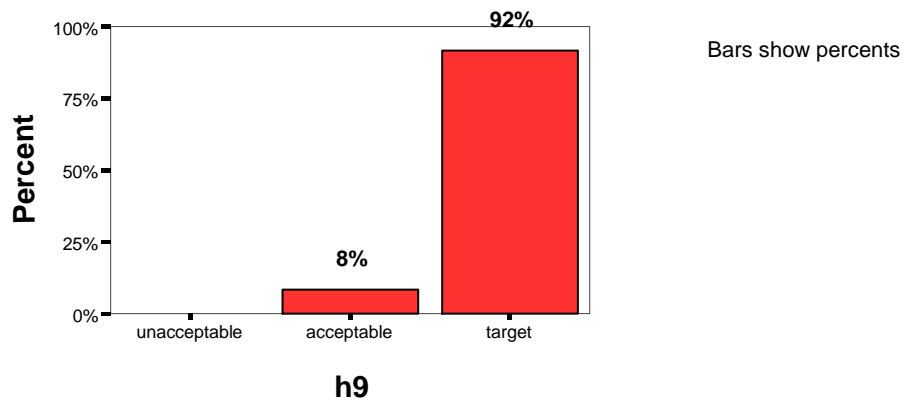
7.7/h7 Demonstrates sensitivity to and for the needs and feelings of all students



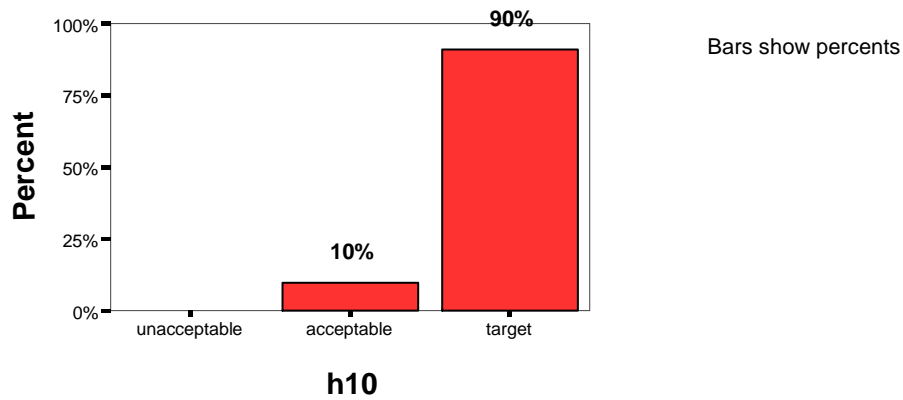
7.8 /h8 Outlines expectations for all students in a clear manner



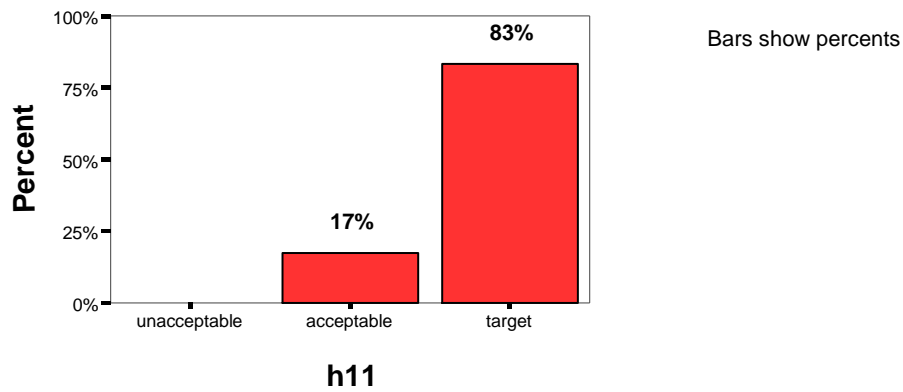
7.9/h9 Conducts learning activities in a logical sequence which are flexible and developmentally appropriate



7.10/h10 Provides illustration, examples, and application of the material

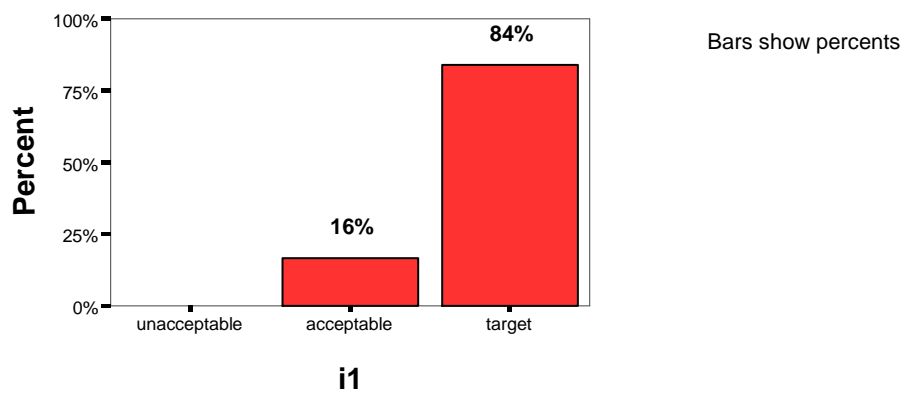


7.11/h11 Designs lessons that integrate technology into teaching

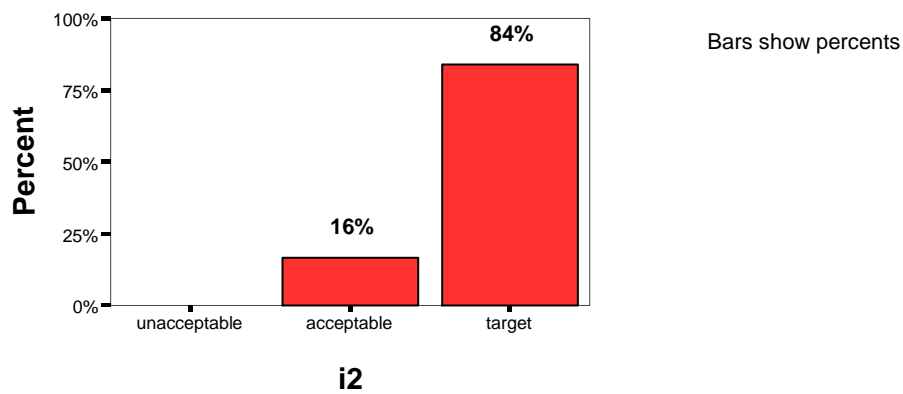


INTASC Standard 8: Assessment of Student Learning to Improve Teaching

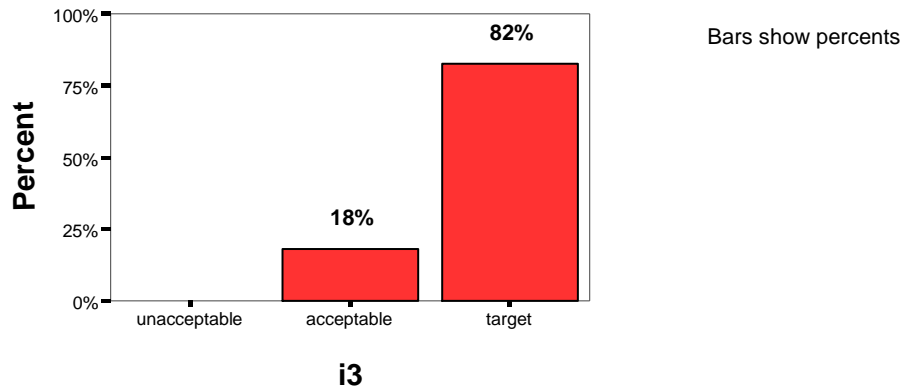
8.1/i1 Recognizes and encourages the special interests and abilities of individual students



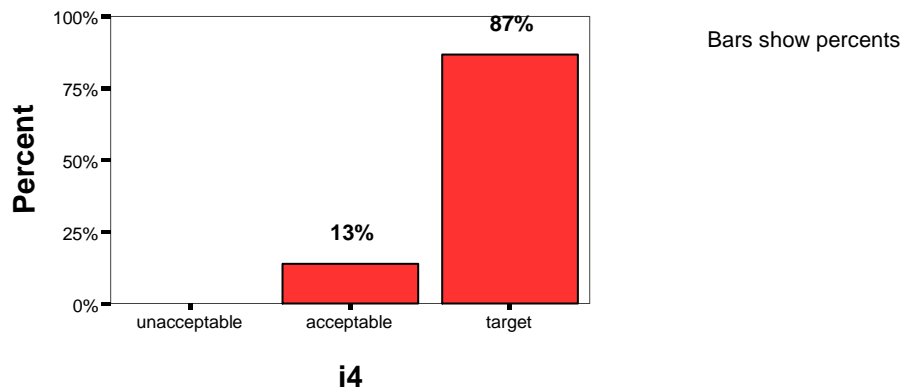
8.2/i2 Selects appropriate materials and procedures for assessing students' progress on objectives



8.3/i3 Uses evaluation instruments or procedures in order to monitor student progress and effectiveness of instruction

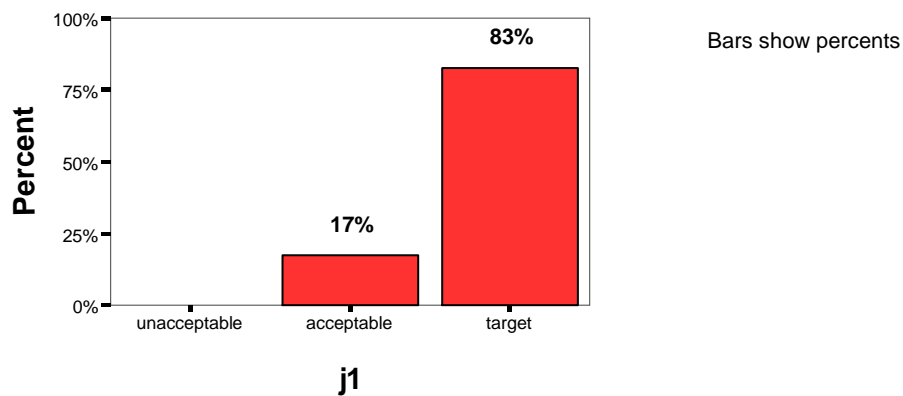


8.4/i4 Evaluates students on the basis of criteria that are aligned with instructional objectives

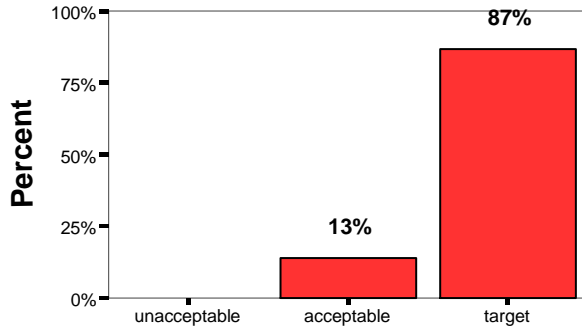


INTASC Standard 9: Reflection and Professional Development

9.1/j1 Recognizes when students are deficient in the basic skills and provides or recommends corrective action



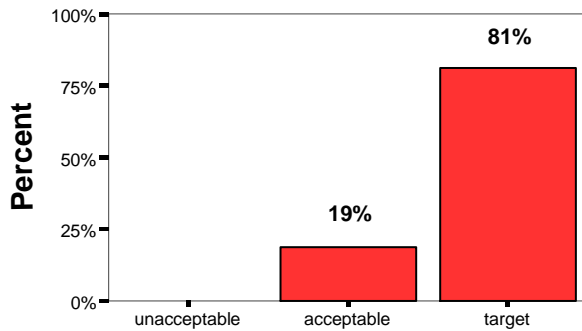
9.2/j2 Obtains and uses information from colleagues to assist students with special needs



Bars show percents

j2

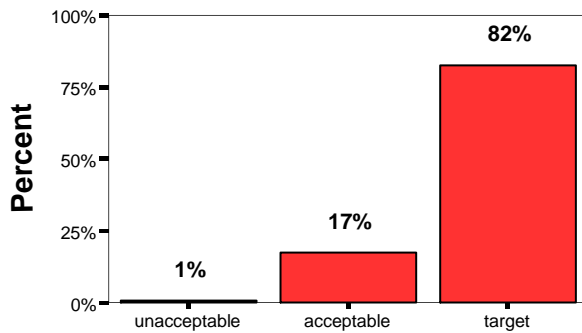
9.3/j3 Identifies students who require the assistance of a specialist



Bars show percents

j3

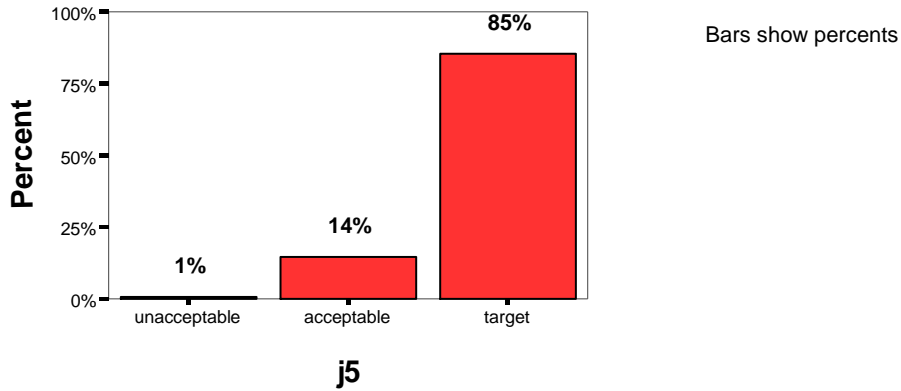
9.4/j4 Handles discipline fairly and consistently



Bars show percents

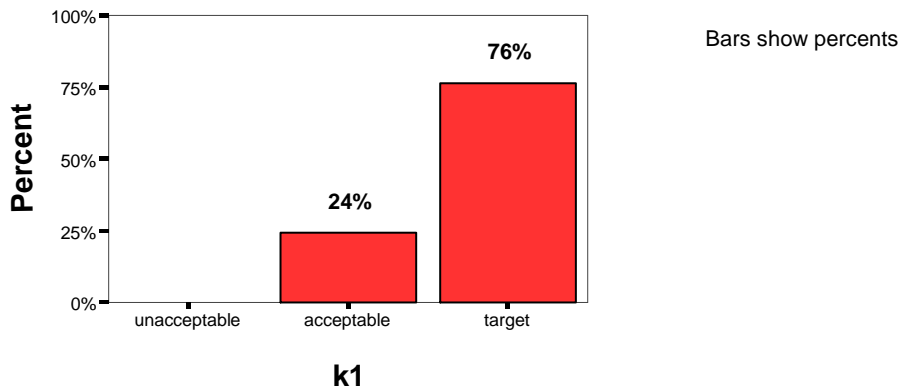
j4

9.5/j5 Demonstrates ability to think about teaching and learning as both a reflective practitioner and educational leader

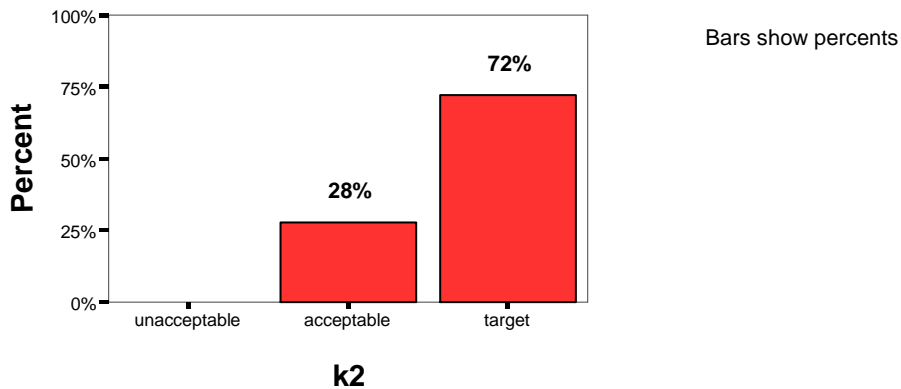


INTASC Standard 10: Partnerships with School and Community

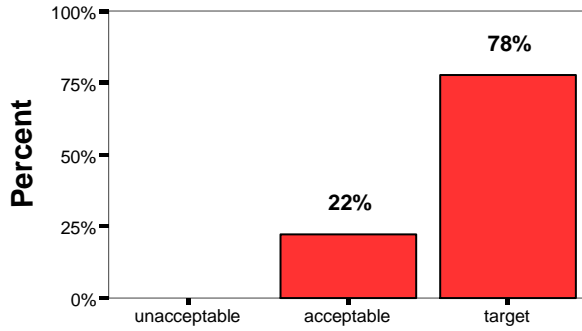
10.1/k1 Encourages and maintains the cooperative involvement and support of parents and community



10.2/k2 Provides opportunities for parents and community involvement



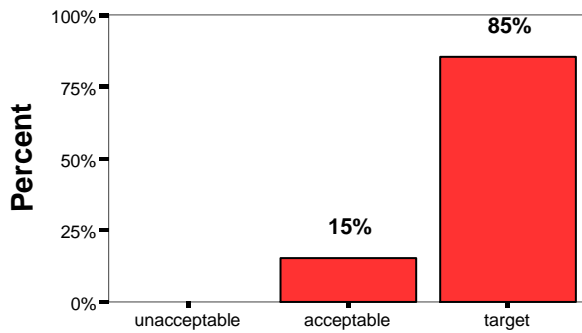
10.3/k3 Uses community resources in instruction



Bars show percents

k3

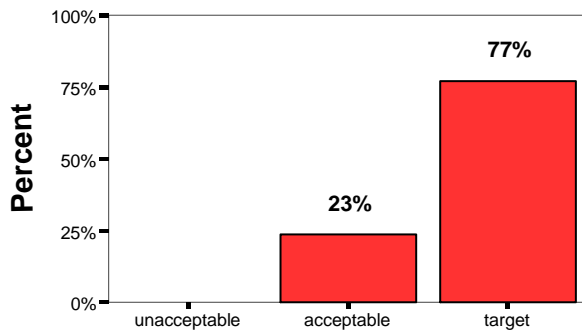
10.4/k4 Understands the rights and responsibilities of students, parents, and teachers



Bars show percents

k4

10.5/k5 Engages parents in the learning process



Bars show percents

k5