

Mail Services

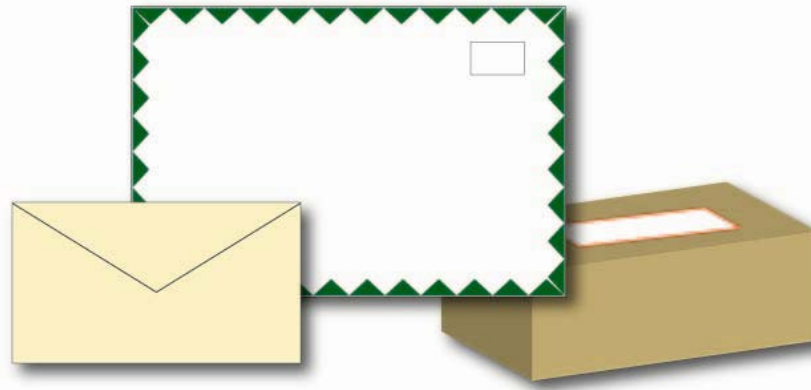
The Basics
Helpful Tips
on

Shaping a More Efficient Future
Pricing Change Effective Monday, May 14
New Shape Based Pricing Regulation



First-Class Mail Strategy

- Shape-based pricing schedules
 - Letters
 - Flats
 - Parcels
- De-emphasize weight

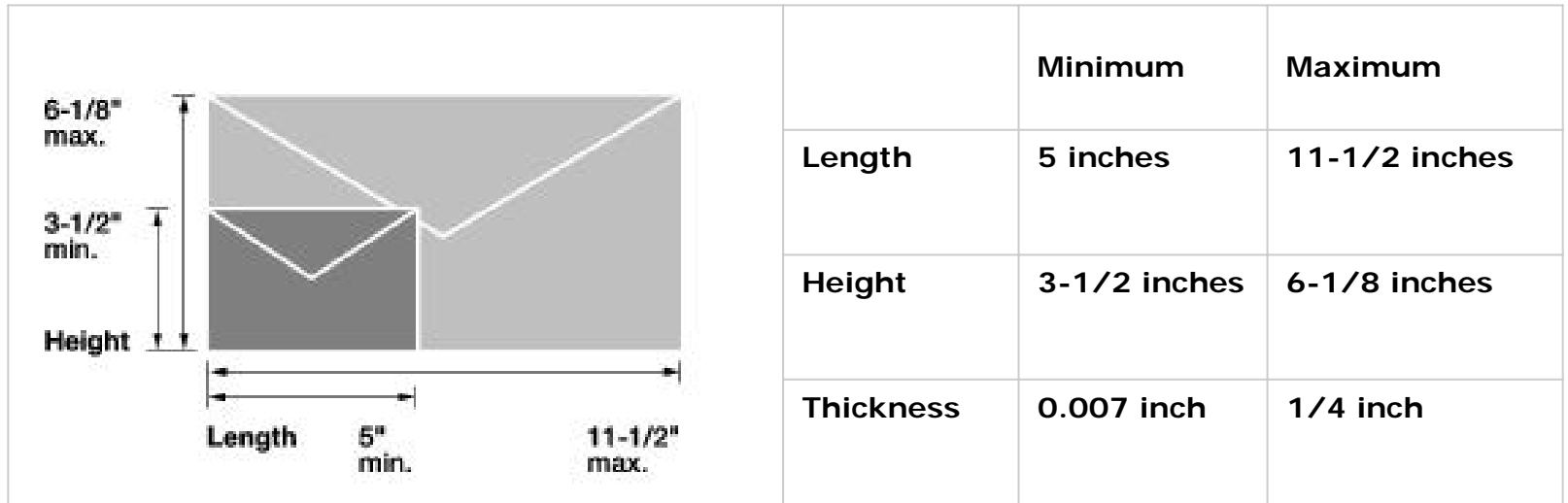


First-Class Mail

■ Postcards	\$.26
■ Letters up to 1 ounce	\$.41
■ Flats up to 1 ounce	\$.80
■ Parcels up to 1 ounce	\$1.13
■ Each additional ounce up to 13 oz*	\$.17
■ Priority Mail up to 1 pound	\$4.60
■ Business Reply 1 ounce letter	\$.49
■ Business Reply Postcard	\$.34

*First-Class pieces over 13 ounces are subject to Priority Mail rates

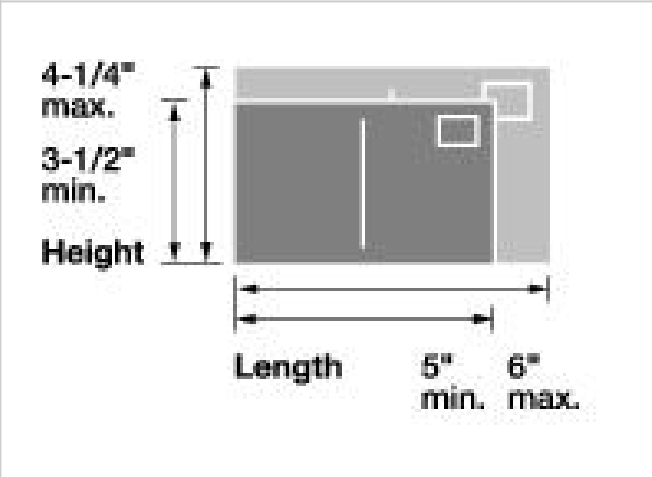
First Class Letter-mail Dimensions



Maximum Weight: 3.5 ounces

First-class letters exceeding maximum weight or sizes will be charged flat-size postage

Postcard Dimensions

 <p>4-1/4" max. 3-1/2" min. Height</p> <p>Length 5" min. 6" max.</p>		Minimum	Maximum
	Length	5 inches	6 inches
	Height	3-1/2 inches	4-1/4 inches
	Thickness	0.007 inch	0.016 inch

Postcards exceeding maximum sizes will be charged letter-size postage

First-Class Flat-mail Dimensions

	Minimum*	Maximum
Length	11-1/2 inches	15 inches
Height	6-1/8 inches	12 inches
Thickness	1/4 inch	3/4 inch

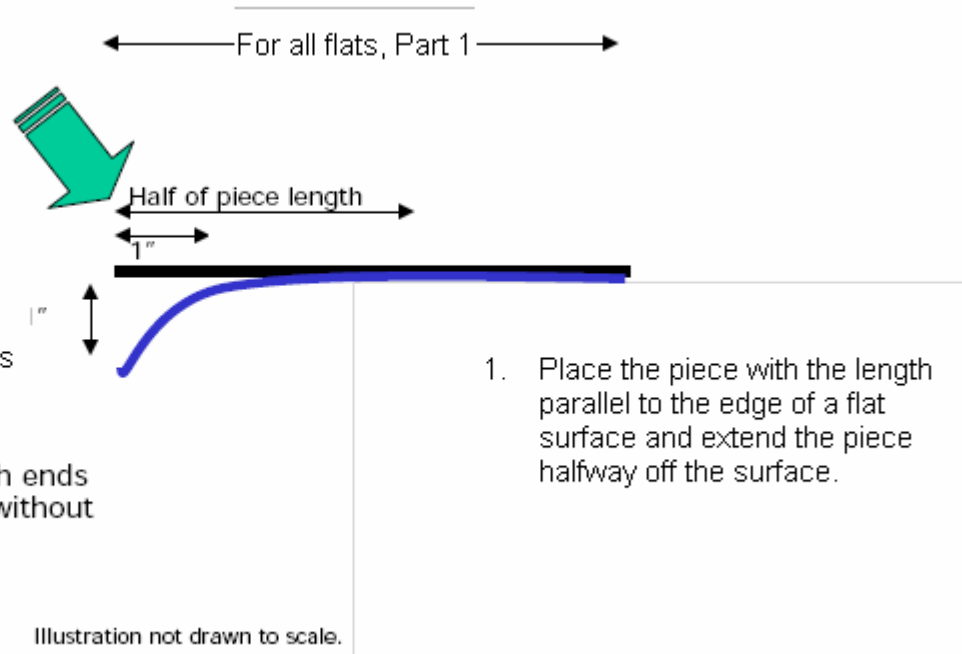
Flats that are rigid or not uniformly thick are subject to parcel rates.
Flat-size mail pieces are considered uniformly thick when any bumps, protrusions, or other irregularities do not cause more than 1/4-inch variance in thickness.
Flats that exceed size maximums will be charged parcel rates.

Testing Flexibility for Flats

2. Press down 1" from edge of piece, in center of piece width.

3. For piece in a wrapper or envelope with no contents within outer perimeter of up to 1" from outside edge, press down at a point 2" from outer edge.

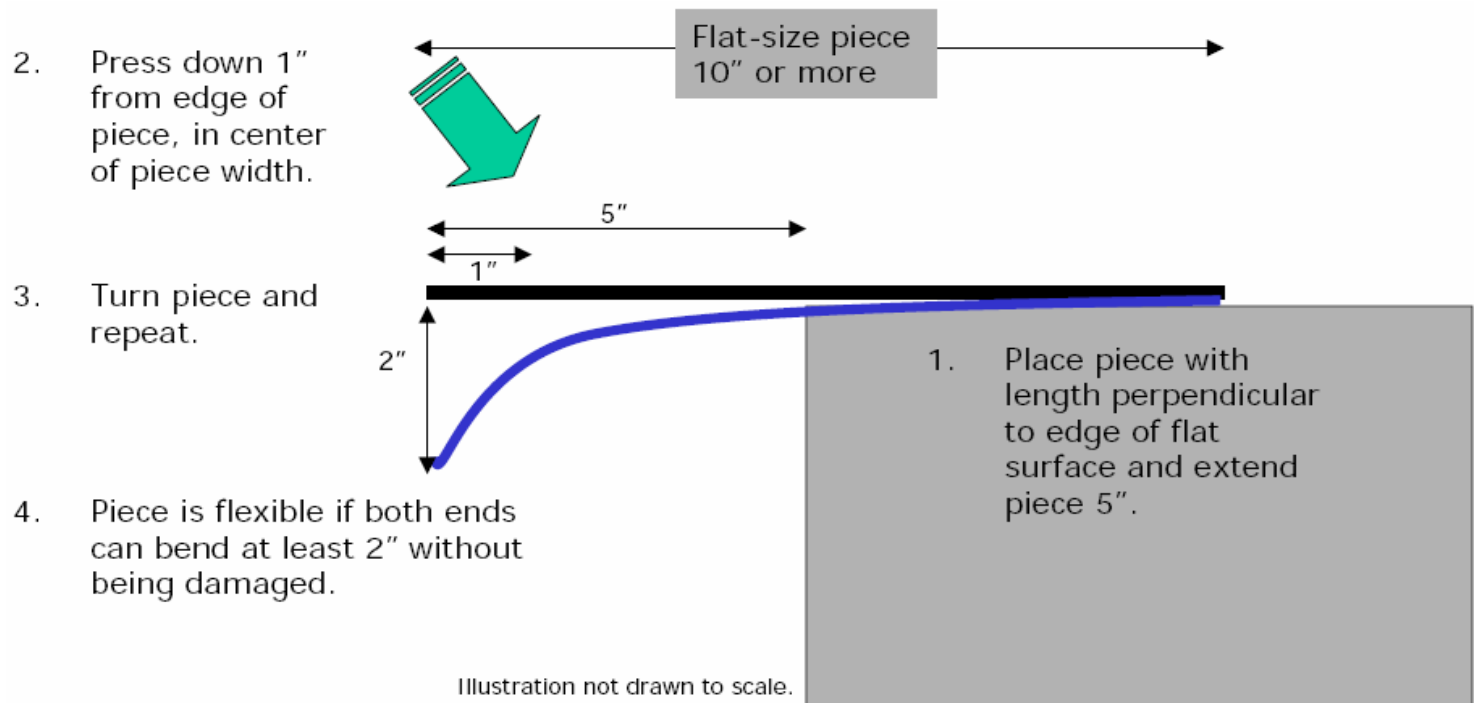
4. Piece is flexible if both ends can bend at least 1" without being damaged.



Examples of “flats” that would be considered too rigid (and therefore not meet the flexibility requirements) boxes and box-like pieces, and tight envelopes that are completely filled to form box-like pieces.

Testing Flexibility for Flats $\geq 10''$

Pieces that pass first test and contain rigid objects.



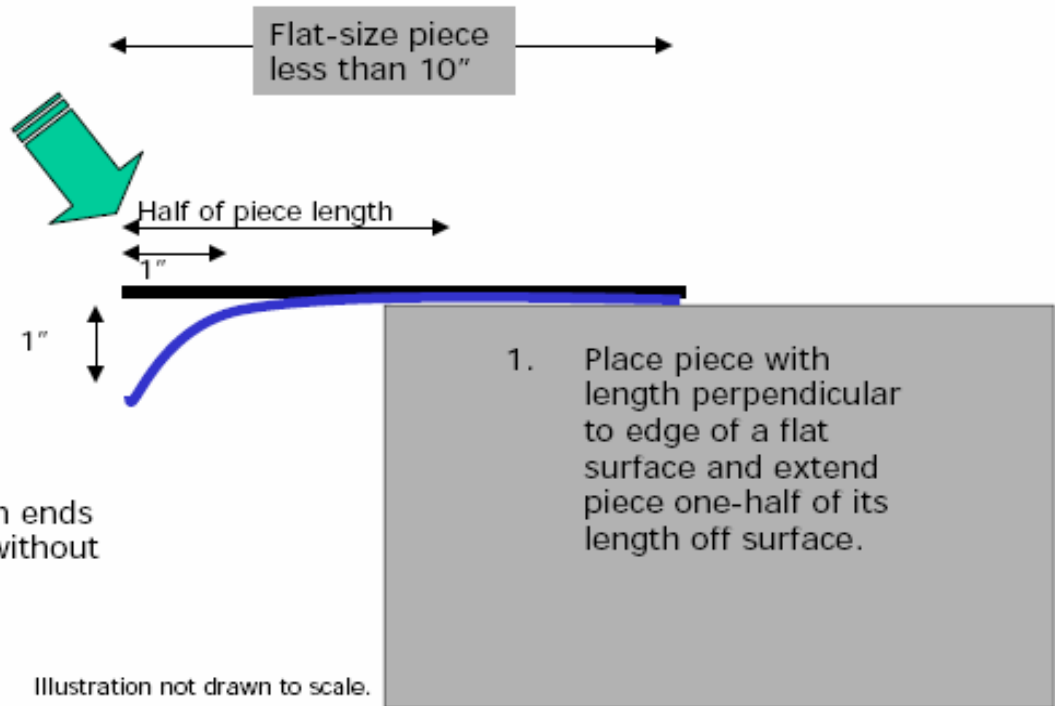
Testing Flexibility for Flats < 10"

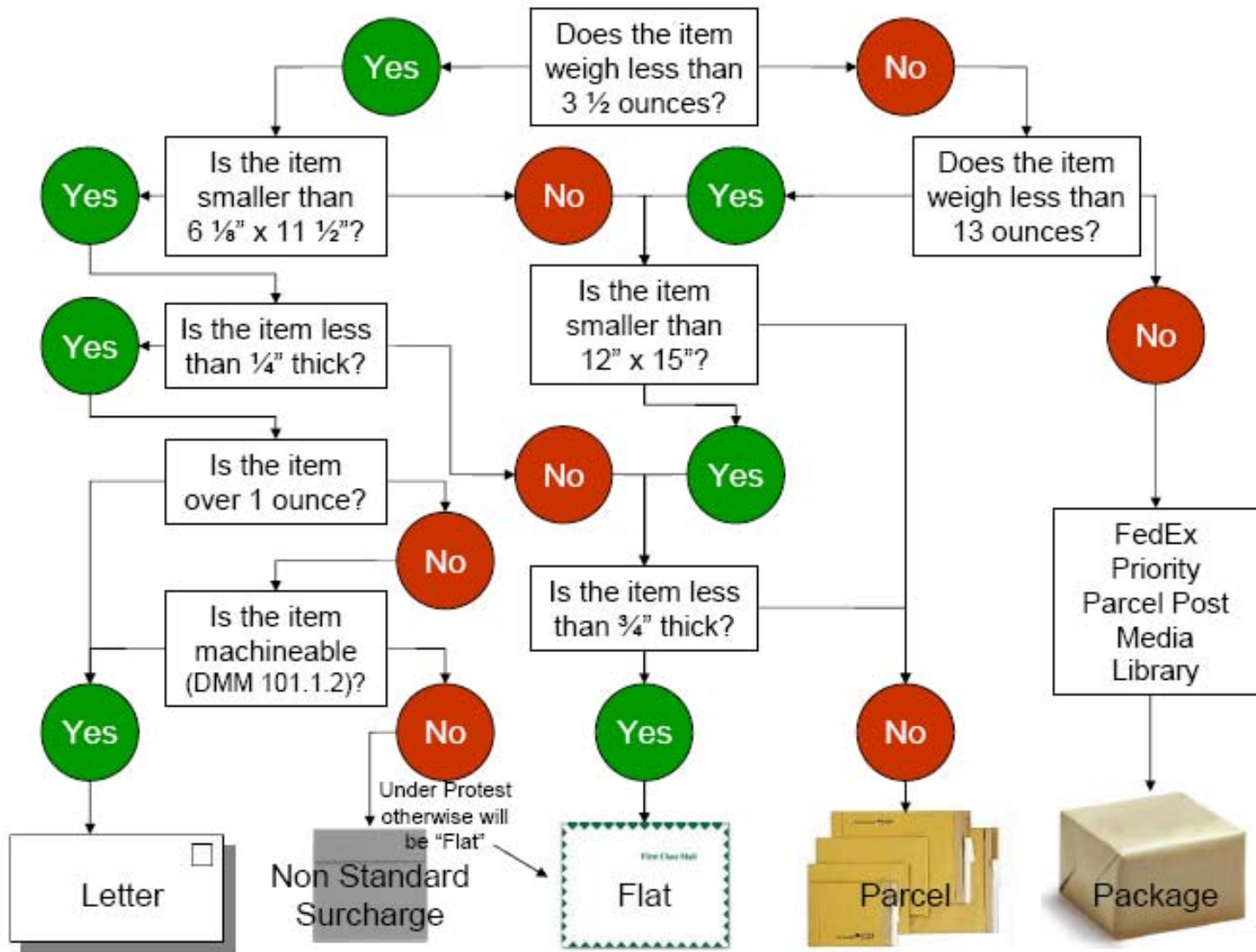
Pieces that pass first test and contain rigid objects.

2. Press down 1" from edge of piece, in center of piece width.

3. Turn piece and repeat.

4. Piece is flexible if both ends can bend at least 1" without being damaged.





First-Class Mail Examples

Letters

Weight	Current	May 14, 2007
1 ounce	39¢	41¢
2 ounce	63¢	58¢
3 ounce	87¢	75¢

Flats

Weight	Current	May 14, 2007
1 ounce	52¢	80¢
7 ounce	\$1.83	\$1.82
13 ounce	\$3.27	\$2.84

Parcels

Weight	Current	May 14, 2007
1 ounce	52¢	\$1.13
7 ounce	\$1.83	\$2.15
13 ounce	\$3.27	\$3.17

First-Class Mail Weight Examples

- the following table illustrates examples of how many pages of 20 pound copy paper can be placed in an envelope at each ounce increment
- when possible, fold pages to fit into a letter-size or 6x9 envelope
- if the thickness of a letter-size or 6x9 envelope is more than ¼ inch thick, it will be charged flat-size postage
- this table is an example only and depending on stock used actual weights may vary

Weight	#10 Letter Envelope	6 x 9 Envelope	9x12 Manila Clasp Envelope
1 ounce	5	4	2
2 ounces	11	10	8
3 ounces	17	16	14
3.5 ounces	20	19	17
Each additional	n/a	n/a	6 pages/oz

Special Services – Domestic Mail

Item	Current	May 14, 2007
Certified Mail	\$2.40	\$2.65
Express Mail up to ½ pound	\$14.25	\$16.25
Return Receipt	\$1.85	\$2.15
Registered Mail up to \$100	\$8.45	\$10.15
Insured Mail up to \$50	\$1.35	\$1.65
Delivery Confirmation – Priority Mail	\$.50	\$.65

Forever Stamp



- The Forever Stamp will be available only in booklets of 20
- The postage value of the Forever Stamp is always the domestic First-Class Mail single-piece 1-ounce letter price that is in effect on the day of mailing.
- The Forever Stamp will be valid for mailing any future 1 ounce single-piece First-Class letter regardless of the price at the time of mailing
- The Forever Stamp or any no denominated stamp (except those that bear unique markings, such as First-Class Presort and Nonprofit Organization) may be affixed to items that are sent to foreign countries. Since international postage prices are higher than comparable domestic prices, additional postage must be affixed if stamps are used on international mail.

Questions & Assistance

Anthony Brunetti
Mail Services Supervisor
Mail Services Department
WT. 143
392-35826/25268
Brnettia1@southernct.edu

