

# Instructions for Connecting to the SouthernCT-Secure wireless network

Last modified on: 01-07-2011

These instructions only apply to University owned laptop computers which are in the SCSU domain and running Windows XP.

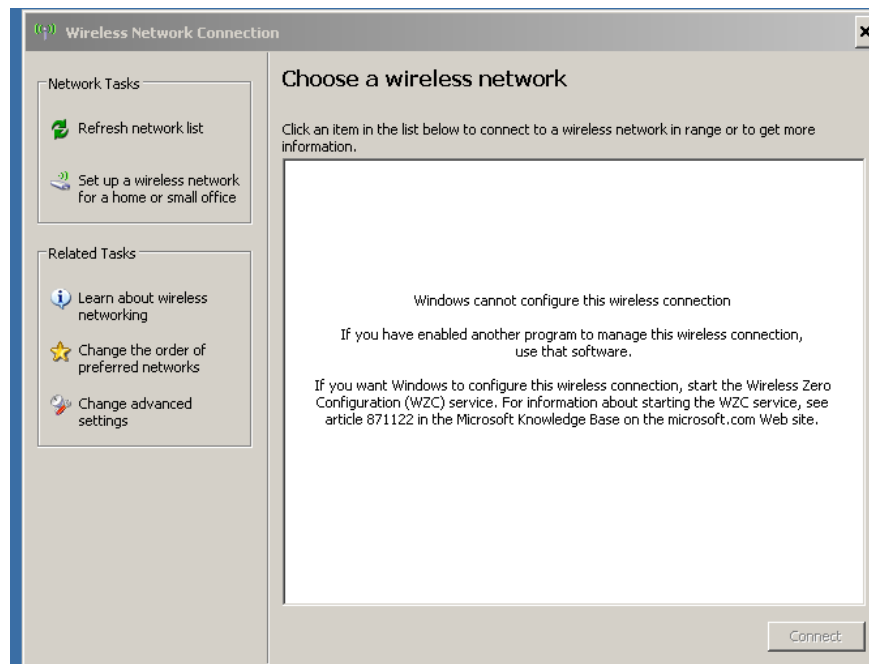
You must have administrative rights on the laptop to perform these tasks.

**Step 1.** Open the Wireless control panel by double clicking the icon in the system tray (lower right hand corner of the start bar, near the clock)

It may look like either of the following:



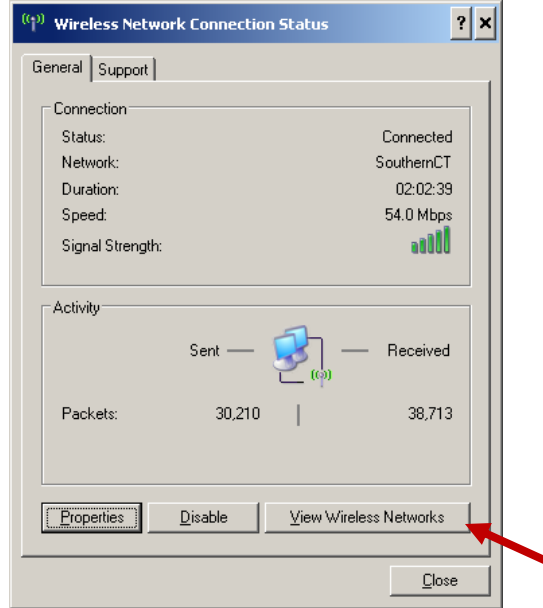
If the page opens like the following:



Please refer to Appendix A to allow Windows to configure the Wireless Network, then return to Step 1. Otherwise continue to step 2.

**Step 2.**

If you are prompted with this box, click “View Wireless Networks”

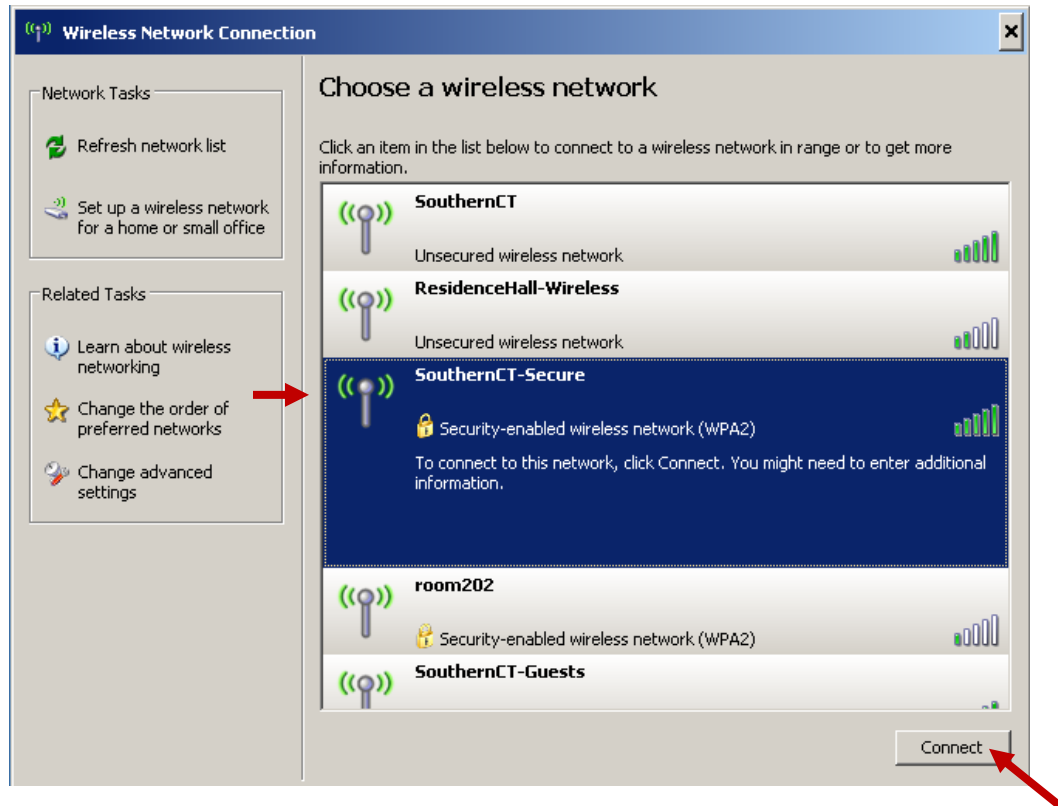


From the Wireless Network Connection pane:

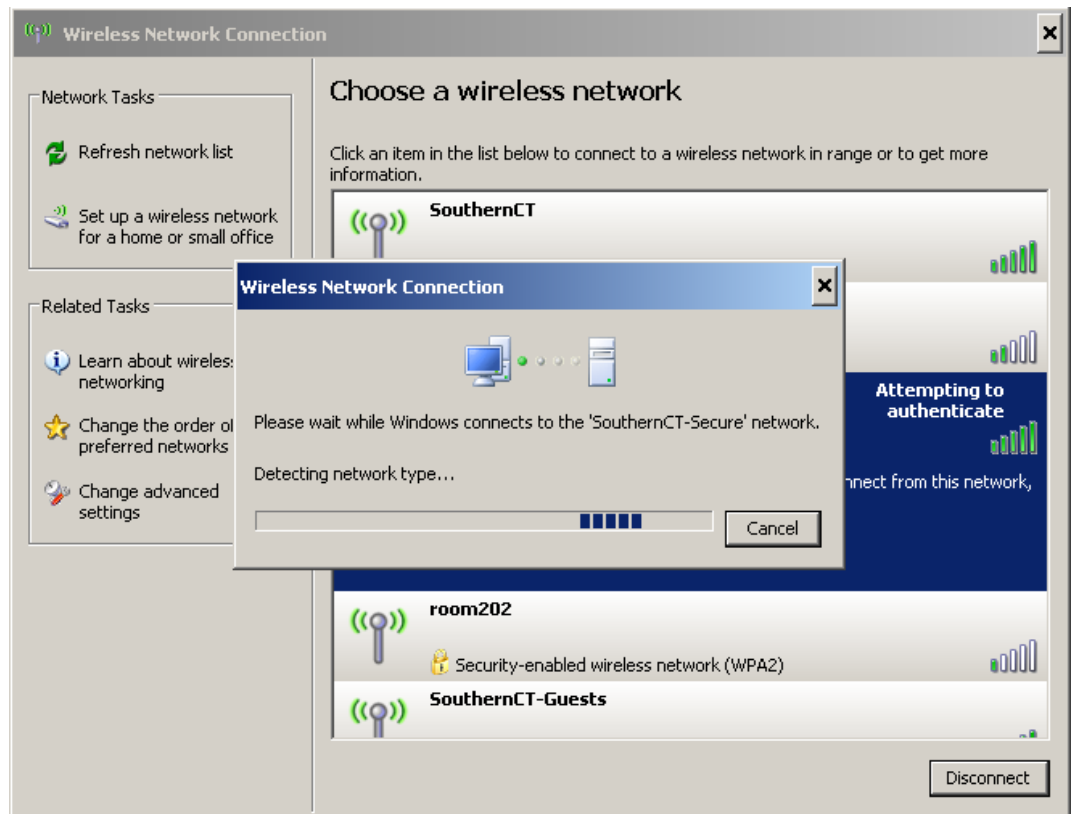
Select SouthernCT-Secure

Click Connect

(Note: You may see more, less, or different entries listed than those shown in the screen shot below, they are safe to ignore, simply select SouthernCT-Secure and click Connect).



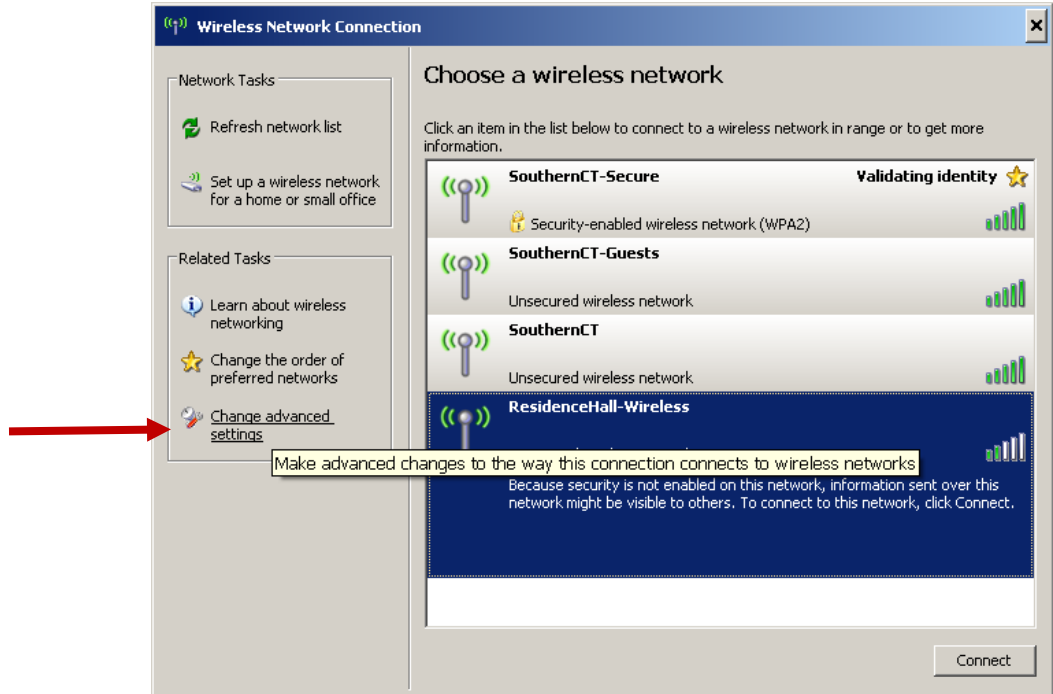
You should see the following for about 15 seconds while the initial connection is made:



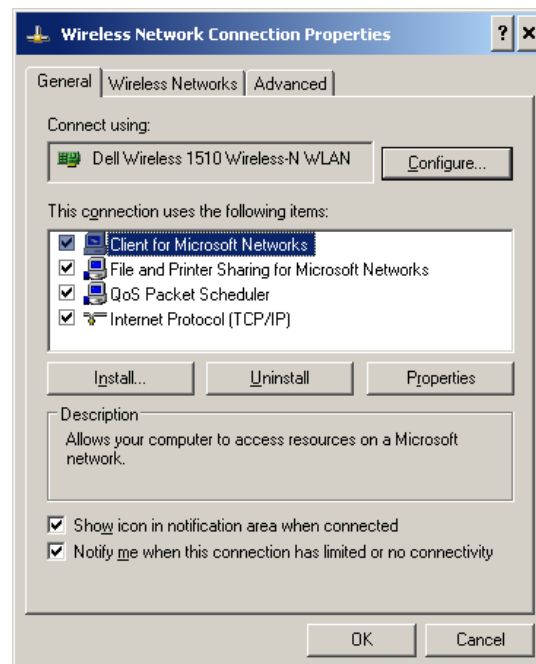
Once the connection is made, a bubble should pop up on the system tray informing you that the connection was made but you are not yet logged on to the network:



**Step 3.** SouthernCT-Secure now says “Validating Identity”, this means it is looking for the secure certificate necessary to log you on to the network. We must now allow the computer to accept the appropriate certificate. To do this click Change advanced settings on the left hand side of the window.



This should open a new window:



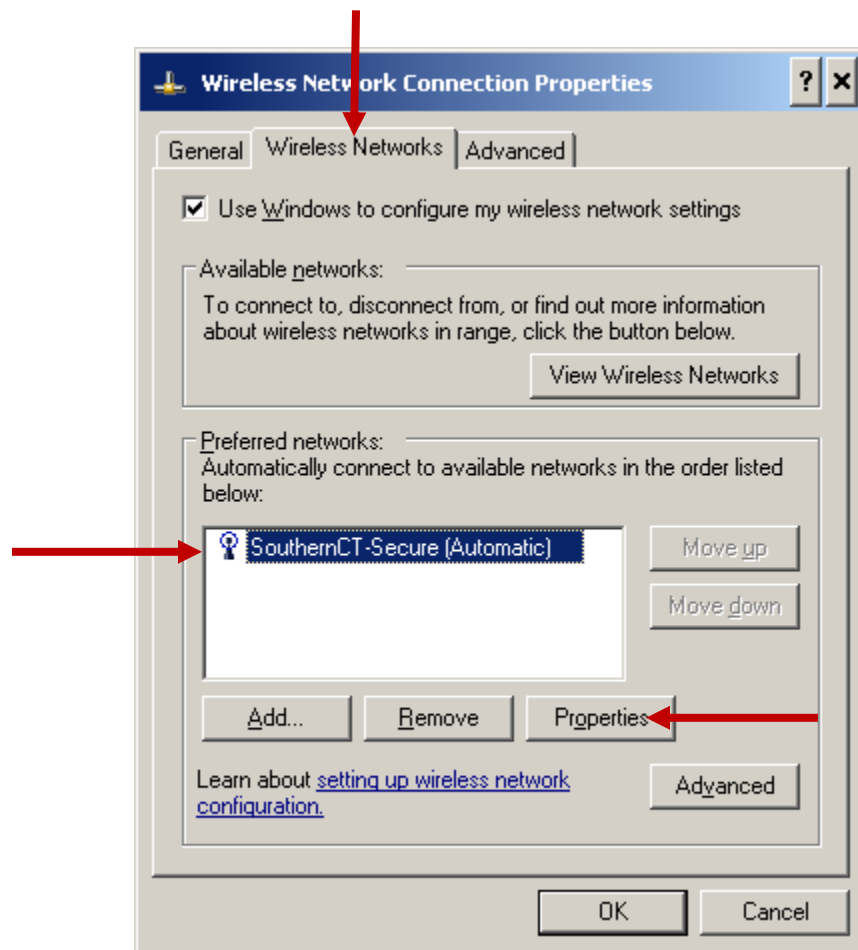
#### Step 4.

Select the Wireless Networks Tab

Select SouthernCT-Secure so that it is highlighted in Blue

If there are entries for multiple networks, use the "Move Up" button to move SouthernCT-Secure to the top of the list.

Click Properties

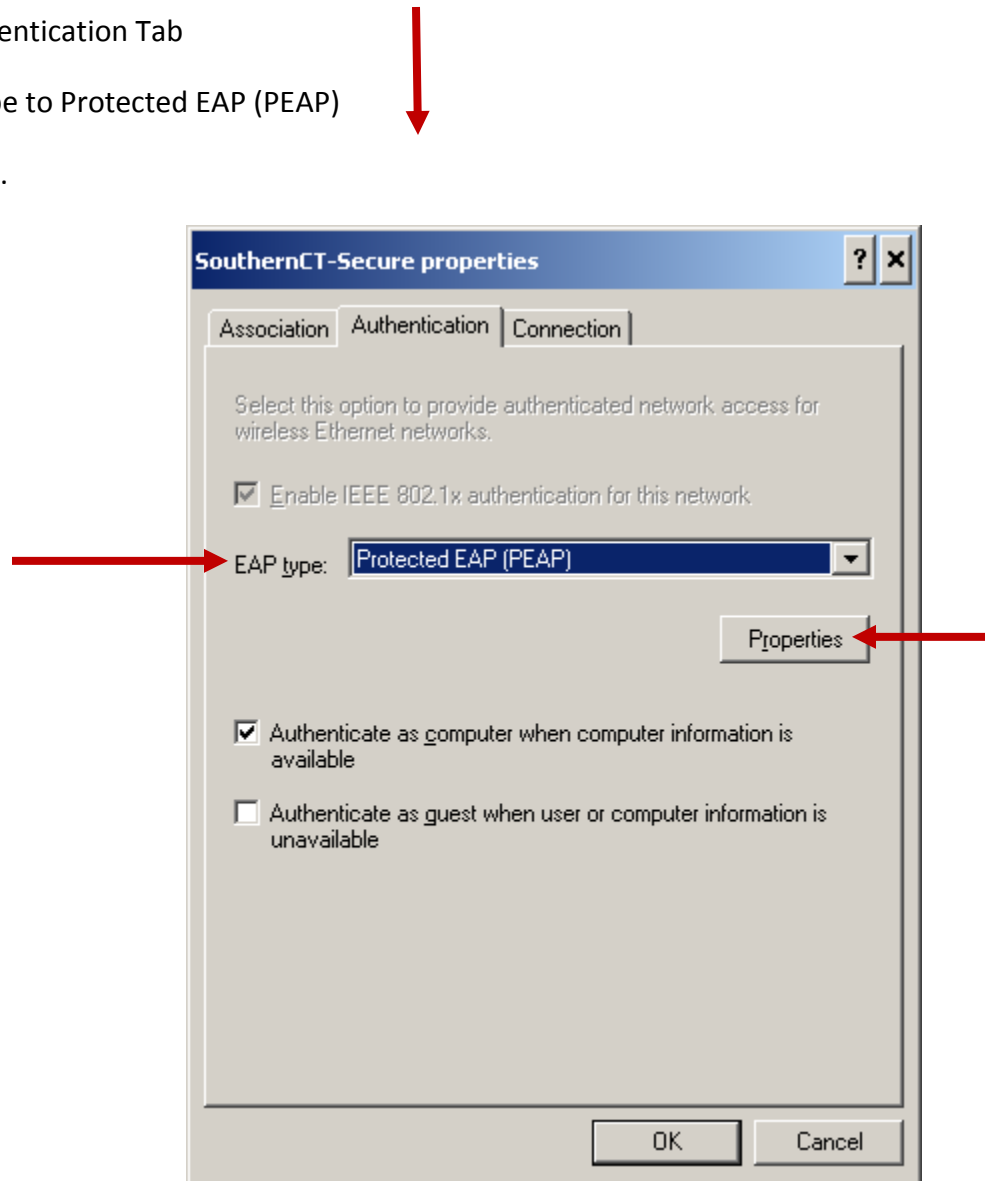


**Step 5.**

Select the Authentication Tab

Change EAP type to Protected EAP (PEAP)

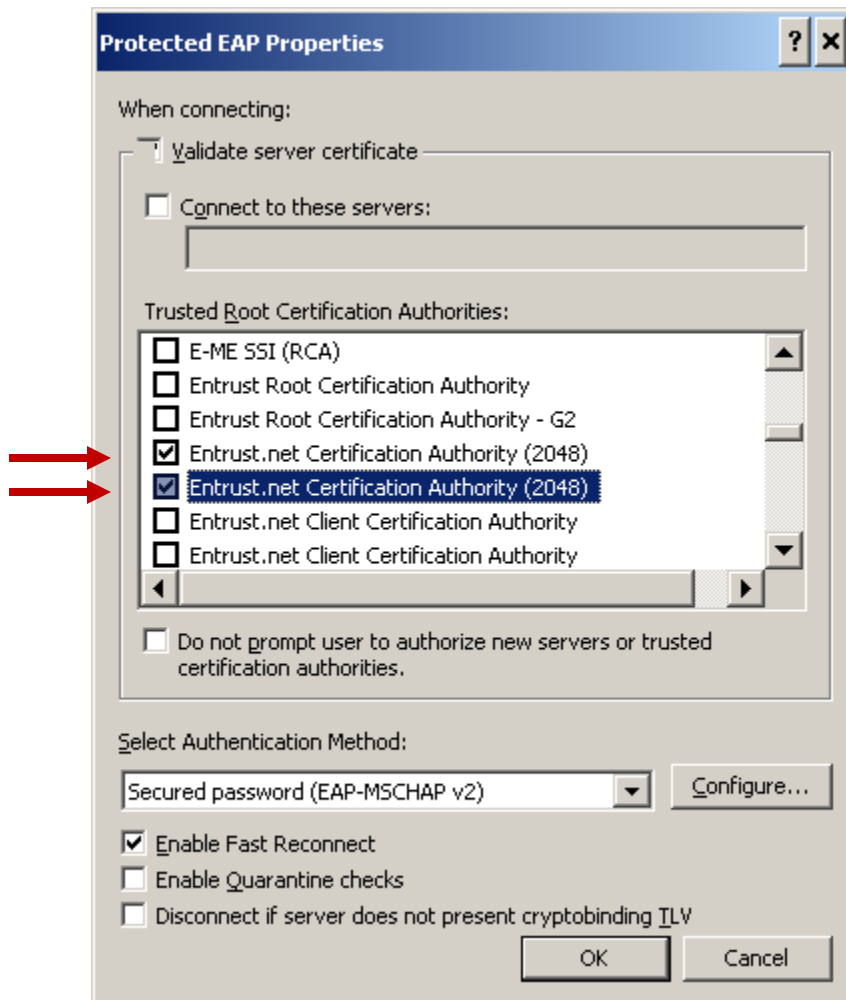
Click Properties.



## Step 6.

In the Trusted Root Certification Authorities box, scroll down and check Both boxes for Entrust.net Certification Authority (2048).

Do not check any other boxes or make any other changes on this screen.



## Step 7.

Click OK to close all open windows (there should be 3 windows open, click OK on all of them).

Restart the computer.

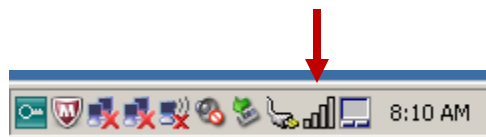
You should now be connected to the SouthernCT-Secure network.

# Appendix A.

## Allowing Windows to Manage your Wireless Settings.

Depending upon which model of laptop you have and which year you received it, it may be using either a Dell Utility to manage the Dell Wireless card, or an Intel Utility to manage an Intel wireless card. The first step is to determine which utility is currently managing your wireless settings.

If your system tray has either of these icons, you have the Dell utility; please follow the instructions for the **Dell Utility**.

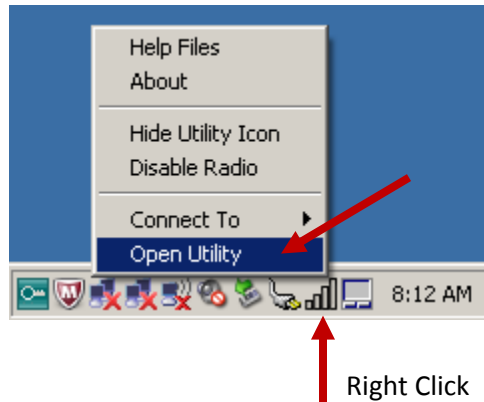


If your system tray has this icon, you have the Intel utility; please follow the instructions for the **Intel Utility**.

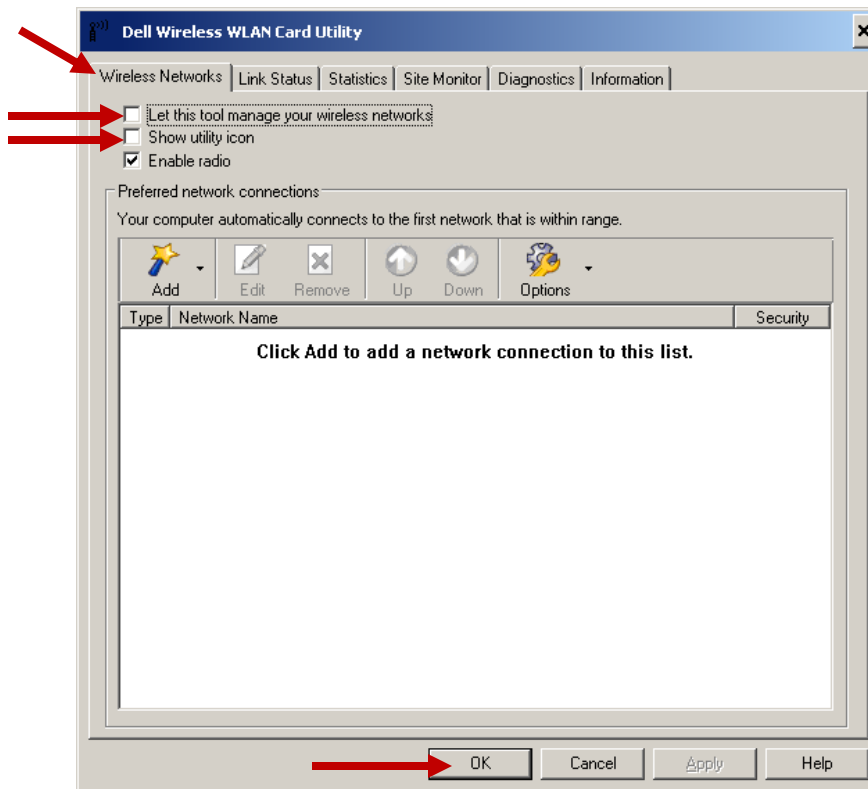


## Dell Utility

Right Click on the bar icon and select Open Utility



On the Wireless Networks Tab, **Uncheck** the top two boxes which say “Let this tool manage your wireless networks” and “Show utility icon”. Then Click OK.



Windows should now be managing your wireless settings. Please return to Step 1 to make the connection to SouthernCT-Secure.

Note: You may have to reconnect any home wireless settings that were previously saved using the Dell utility. Please refer to the information provided by your Internet Service Provider to re-establish these connections.

## Intel Utility

Double click on the Intel PROSet/Wireless Wifi Connection utility Icon to open the utility.

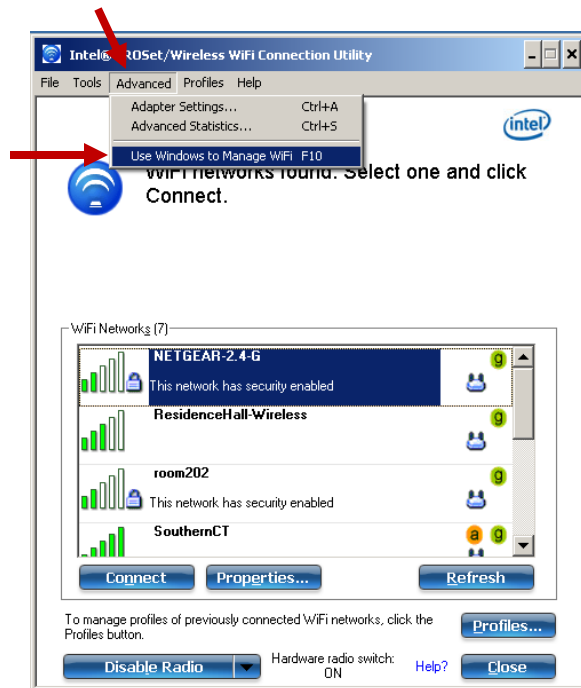


The following window should appear:



Click Advanced

Select "Use Windows to manage WiFi"



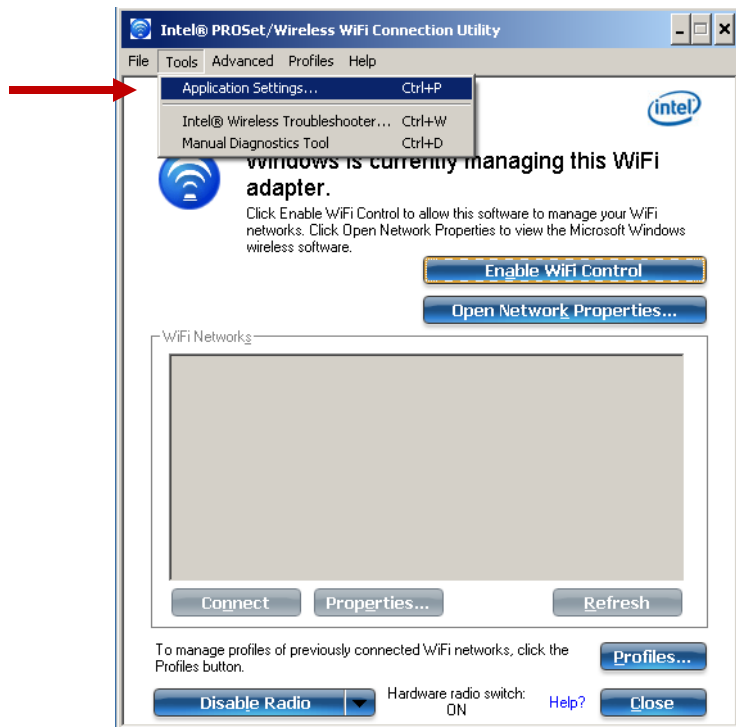
You will be prompted with a confirmation box. Click Yes



After about 15 seconds, a window will appear confirming that Windows is managing the wireless connection.

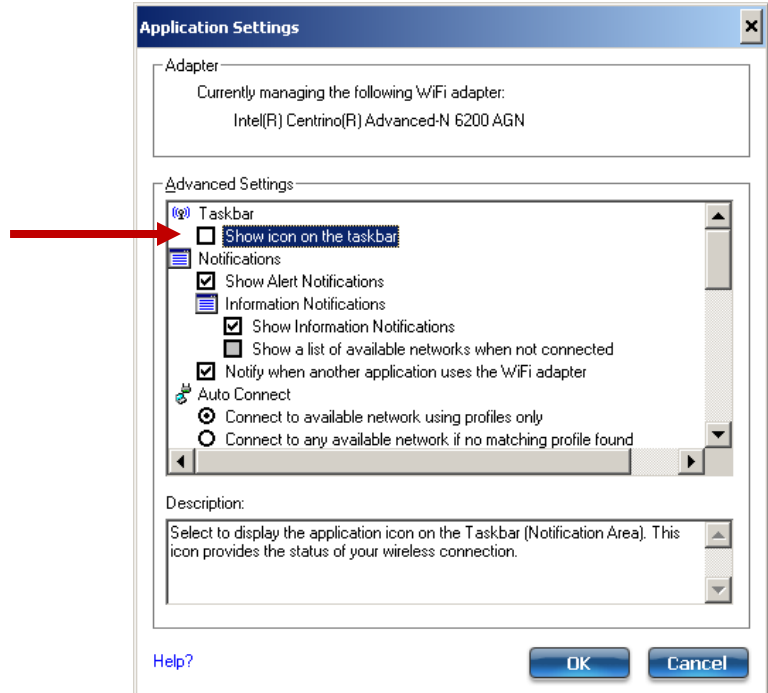


Click Tools, Application Settings



Uncheck the top box for “Show icon on the taskbar”

Click OK



Click Close



Windows should now be managing your wireless settings. Please return to Step 1 to make the connection to SouthernCT-Secure.

Note: You may have to reconnect any home wireless settings that were previously saved using the Intel utility. Please refer to the information provided by your Internet Service Provider to re-establish these connections.